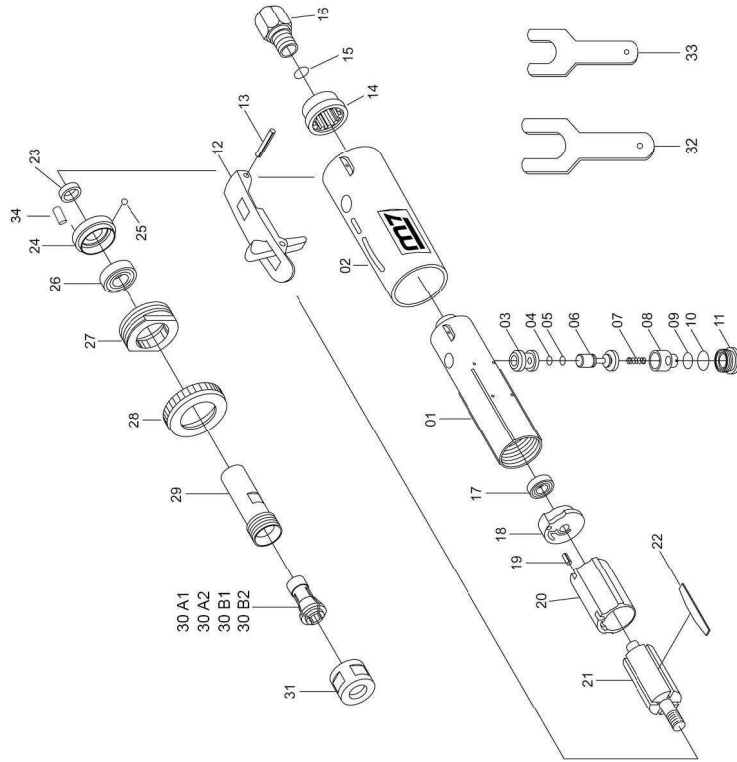




1/4" Air Die Grinder
Item No : QA-211



● The consumable parts ▲ The replacement parts ★ The non-replacement parts



Part List QA-211

NO.	PART NO.	DESCRIPTION	Q'TY
★ 1	QA-211P01	Motor Housing	1
★ 2	QA-211P02	Grip	1
★ 3	QA-211P03	Throttle Bushing	1
▲ 4	QA-211P04	O-Ring	1
▲ 5	QA-211P05	O-Ring	1
★ 6	QA-211P06	Valve Stem	1
★ 7	QA-211P07	Spring	1
★ 8	QA-211P08	Regulator	1
▲ 9	QA-211P09	O-Ring	1
▲ 10	QA-211P10	O-Ring	1
★ 11	QA-211P11	Throttle Valve Plug	1
★ 12	QA-211P12	Throttle Lever	1
★ 13	QA-211P13	Spring Pir	1
★ 14	QA-211P14	Exhaust Plate	1
▲ 15	QA-211P15	O-Ring	1
★ 16	QA-211P16	Air Inlet Bushing	1
▲ 17	QA-211P17	Ball Bushing	1
▲ 18	---	Rear End Plate	1
▲ 19	---	Spring Pir	1
★ 20	QA-211P20	Cylinder	1
★ 21	QA-211P21	Rotor	1
★ 22	QA-211T22	Rotor Blade (4pcs)	1 Set
★ 23	QA-211P23	Rotor Collar	1
▲ 24	---	Front End Plate	1
▲ 25	---	Steel Ball	1
▲ 26	QA-211P26	Ball Bearing	1
★ 27	QA-211P27	Motor Clamp	1
★ 28	QA-211P28	Clamp Nut	1
★ 29	QA-211P29	Collet Sleeve	1
● 30A1	QA-211P30A1	Collet 3 mm	1
● 30A2	QA-211P30A2	Collet 6 mm	1
● 30B1	QA-211P30B1	Collet 1/8"	1
● 30B2	QA-211P30B2	Collet 1/4"	1
★ 31	QA-211P31	Collet Nut	1
★ 32	QA-211P32	19 mm Spanner Wrench	1
★ 33	QA-211P33	14 mm Spanner Wrench	1
▲ 34	---	Pin	1
▲	QA-211T01	Rear End Plate Ass'y (18.19)	1 Set
▲	QA-211T02	Front End Plate Ass'y (24.25.34)	1 Set