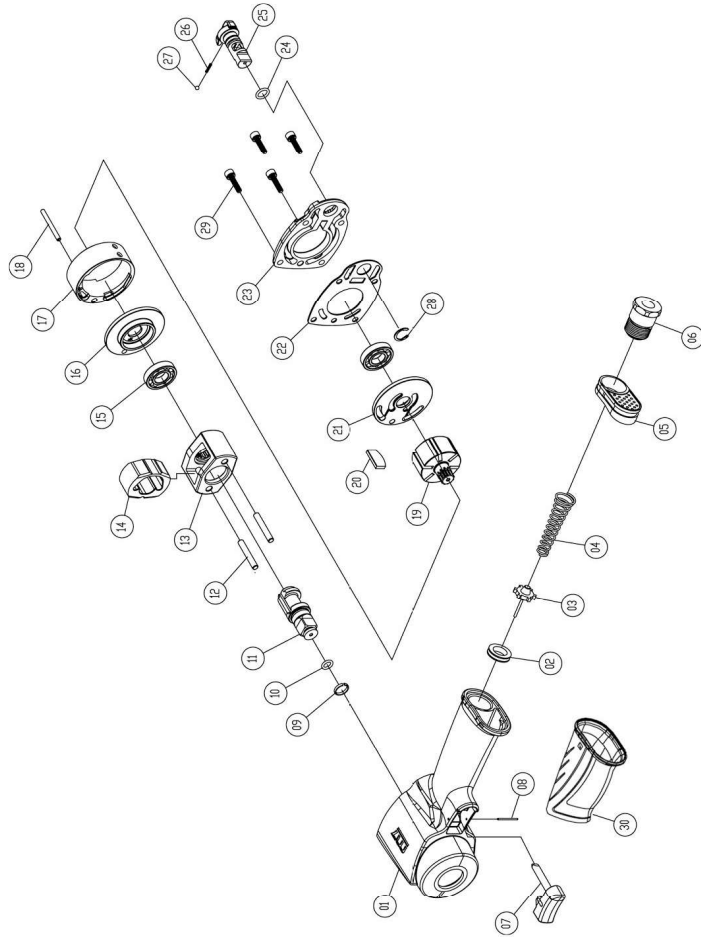




**1/2" Air Impact Wrench
Item No : NC-4650**



● The consumable parts ▲ The replacement parts ★ The non-replacement parts



Part List Jumbo Hammer Type NC-4650

| NO. | PART NO. | DESCRIPTION | QTY |
|------|------------|------------------------------------|-------|
| ★ 1 | NC-4650P01 | MOTOR HOUSING | 1 |
| ★ 2 | NC-4650P02 | THRITTLE BUSHING | 1 |
| ★ 3 | NC-4650P03 | VALVE STEM | 1 |
| ★ 4 | NC-4650P04 | SPRING | 1 |
| ★ 5 | NC-4650P05 | EXHAUST DEFLECTOR | 1 |
| ★ 6 | NC-4650P06 | INLET BUSHING | 1 |
| ★ 7 | NC-4650P07 | TRIGGER | 1 |
| ★ 8 | NC-4650P08 | TRIGGER PIN | 1 |
| ★ 9 | NC-4650P09 | SOCKET RETAINER | 1 |
| ★ 10 | NC-4650P10 | RETAINER O-RING | 1 |
| ★ 11 | NC-4650P11 | STANDARD ANVIL 1/2" | 1 |
| ▲ 12 | NC-4650T12 | HAMMER PIN (2pcs) | 1 SET |
| ▲ 13 | NC-4650P13 | HAMMER CAGE | 1 |
| ▲ 14 | NC-4650P14 | HAMMER DOG | 1 |
| ▲ 15 | NC-4650T15 | BALL BEARING (2pcs) | 1 SET |
| ▲ 16 | NC-4650P16 | FRONT PLATE | 1 |
| ★ 17 | NC-4650P17 | CYLINDER | 1 |
| ★ 18 | NC-4650P18 | CYLINDER PIN | 1 |
| ★ 19 | NC-4650P19 | ROTOR | 1 |
| ★ 20 | NC-4650T20 | ROTOR BLADE (6pcs) | 1 SET |
| ▲ 21 | NC-4650P21 | REAR PLATE | 1 |
| ▲ 22 | NC-4650P22 | GASKET | 1 |
| ★ 23 | NC-4650P23 | HOUSING CAP | 1 |
| ★ 24 | NC-4650P24 | O-RING | 1 |
| ★ 25 | NC-4650P25 | REVERSE VALVE | 1 |
| ★ 26 | NC-4650P26 | SPRING | 1 |
| ★ 27 | NC-4650P27 | STEEL BALL | 1 |
| ★ 28 | NC-4650P28 | SPRING | 1 |
| ★ 29 | NC-4650T29 | SCREW (4pcs) | 1 SET |
| ★ 30 | NC-4650P30 | GRIP | 1 |
| ★ | NC-4650T11 | STANDARD ANVIL 1/2" ASSY (9.10.11) | 1 SET |