

# EPOTREAD W50

## PREMIUM CLEAR EPOXY FLOOR COATING

**Durable and Hardwearing**

**Excellent Chemical Resistance**

**Non-toxic and Solvent Free**

### DESCRIPTION

**Epotread W50** is a two-pack heavy duty clear waterbased epoxy coating manufactured with the latest epoxy resin technology.

**Epotread W50** provides a very hardwearing and chemical resistant finish with very high adhesion

### PRODUCT FEATURES

- Durable and hardwearing
- Incredible adhesion to sound concrete
- Slip resistance enhanced options
- Non-toxic and solvent free
- Apply by brush, roller or airless sprayer
- Excellent fuel, oil and grease resistance
- Easy 1:1 mix ratio (Part A & Part B)
- Resists hydrostatic pressure when cured

### USE AREAS

- Workshop, hangar, factory, warehouse floors
- Diamond cut or acid etched concrete floors
- Winery and beverage industries
- Durable and easy to clean interior wall finish

### PACKAGING

Epotread W50 is available in 4 litre, 8 litre and 20 litre packs. Each pack consists of two components (Part A and Part B). The total quantity comprises the pack size, eg. 20 litre pack includes 10 litres of Part A plus 10 litres of Part B.



PART A



PART B

### APPLICATION INSTRUCTIONS

**SURFACE PREPARATION:** All surfaces to be structurally sound and free of contamination. Loose or flaking paint must be removed by diamond grinding on concrete floors or sanding on timber floors. Oil, grease dirt etc must be removed with OmniWash detergent then acid etching and waterblasting, or by diamond grinding if oil deposits are excessive. It is recommended to prepare all unpainted new or smooth concrete floor surfaces by Hydrochloric Acid etching and waterblasting or diamond grinding. Then ensure the surface is dry and vacuum cleaned to a dust free standard before coating. Diamond grinding is recommended on older floors. Cracks can be cut out using a diamond cutting blade on an angle grinder, then filled with Cretex SL epoxy resin. Refer to Cretex SL Data sheet. Timber floors should be prepared by sufficient sanding and lightly sanded between each coat.

**MIXING:** Wear impervious nitrile disposable gloves. Stir Part A thoroughly to ensure no resin has settled. Combine Part A with Part B equal volumes (1:1) and mix thoroughly for at least 1 minute until homogeneous. A spiral mixer on a drill is recommended for mixing. Scrape down the sides of the pail to check for any unmixed material then restir. Pour the mixed material into a clean pail.

**THINNING:** Thin 20% with water for the first coat only to increase penetration on unpainted concrete surfaces. Important: When thinning, combine Part A and Part B together and mix thoroughly, then add the measured amount of water, then mix thoroughly again.

**WORKING TIME:** Only mix the required amount, as combined material must be used within the pot life of 2 hours at 20°C or 1.5 hours at 25°C.

**APPLICATION:** Apply the mixed Epotread W50 to the prepared surface evenly using a quality 10mm nap draylon roller sleeve, taking care to apply at the correct coverage rate. If using an airless sprayer, the first coat application should be assisted with a roller to ensure no air is trapped in the substrate.

**COVERAGE RATE:** 10 square metres/litre, per coat depending on porosity and profile of substrate. Two coats is recommended on unpainted concrete.

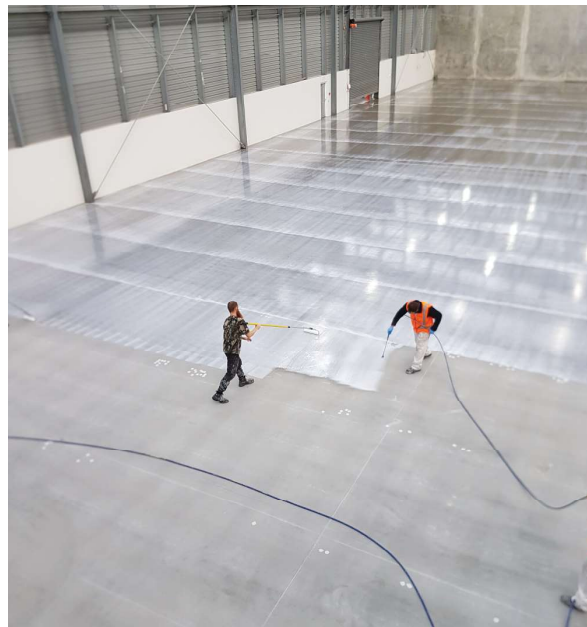
**DRYING TIME:** 7-10 hours at 20°C. Light traffic after 12 hours. Full cure 5-7 days at 20°C. This coating should only be applied at temperatures between 8°C and 30°C. Recoat time 12 hours at 20°C, surface to be tack free. Air fans should be used to assist drying of the top coat to give an improved finish, especially in areas of poor ventilation or raised humidity.

**CLEAN UP:** Water and mild detergent. Isopropyl, meths or OmniWash detergent may be used if necessary before setting commences.

## PRODUCT DATA SUMMARY

Property	Typical Values
Colour, wet	Part A: White liquid epoxy resin Part B: Amber liquid
Odour	Low odour, waterbased
Pack sizes available	4 litre, 8 litre, 20 litre
Coverage rate	10 m <sup>2</sup> / litre per coat
Mix ratio	1:1 equal parts by volume
Pot life once mixed	2 hours at 20°C or 1.5 hours at 25°C
Application temperature range	8°C to 30°C
Specific gravity	1.09kg / litre /(Mixed A + B)
Touch dry time	10 hours at 20°C
Application	Brush, roller or airless sprayer
Number of coats required	2 coats on most surfaces 1 coat to dust seal concrete
Re-coat time	12 hours at 20°C. Surface to be tack-free
Light foot traffic	12 hours at 20°C
Light vehicle traffic	36 hours at 20°C
Full cure	4-6 days at 20°C
VOC content	39 grams per litre
CRF value	>11.0 Non-Directional (kW/m <sup>2</sup> )
Clean up	Warm water and detergent while wet
Storage	Store indoors between 8°C and 20°C
Shelf life	12 months in unopened pails

Actual values may vary from the samples tested



## HEALTH AND SAFETY

**FLAMMABILITY:** Non flammable.

**SKIN CONTACT:** Wear impervious gloves such as nitrile disposable gloves. Occasional contact is unlikely to have any adverse effect except on particularly sensitive skin. As a general precaution, avoid repeated or prolonged contact. Remove skin contamination when wet with water. Use a proprietary hand cleaner if the product has dried.

**EYE CONTACT:** As eyes are a sensitive area, contact should be avoided. Wear safety glasses while mixing and applying. In the event of accidental contact, rinse immediately with plenty of clean water. Consult a doctor

**INHALATION:** Use in well ventilated areas and avoid excessive inhalation. This product is not likely to cause breathing difficulty, but if breathing problems occur, move the person to fresh air and obtain medical attention.

**ORAL INGESTION:** With proper handling oral ingestion should not occur. The possibility can be minimized by not consuming food in the working area and by washing hands thoroughly before eating and drinking.

**SPILLAGE:** Unused material should be disposed of in accordance with local regulations. Do not dispose of unused material into drains.

**DISPOSAL OF CONTAINERS:** Do not leave empty containers on the work site where any residue could be a hazard to children or animals. Replace lids and remove all containers to a central disposal point.

**SDS AVAILABLE ON REQUEST**

## TECHNICAL SUPPORT

Further information is available on our full range of epoxy floor repair resins, concrete sealers, waterproofing and roof coatings. Visit our website at [www.regiscoatings.co.nz](http://www.regiscoatings.co.nz) or phone Tollfree: 0800 542 542 to request brochures or a site visit.

## SPECIFICATION CLAUSE

Concrete areas so designated shall be coated with Epotread W50 waterbased epoxy as supplied by Regis Coatings. This shall be applied to the prepared surface in accordance with the Regis Coatings current product data sheet.



### MANUFACTURED BY:

**Regis Coatings Ltd**

127 Antigua Street, Addington, Christchurch 8024, NZ

**Phone:** +64 3 962 6387

**Freephone:** 0800 542 542

**Email:** [sales@regiscoatings.co.nz](mailto:sales@regiscoatings.co.nz)

**Website:** [www.regiscoatings.co.nz](http://www.regiscoatings.co.nz)

The information provided in this technical bulletin is as up-to-date and correct in detail as possible and is intended to give a fair description of the product and its capabilities. The user of these materials must satisfy themselves with the suitability for a particular application. If unsure about use with certain chemicals, please contact the manufacturer.

**T: 0800 542 542**

**W: [www.regiscoatings.co.nz](http://www.regiscoatings.co.nz)**

Revised: July 2024

