

Kit Includes:

- A: Double Din Facia
- B: 1 x Pair of Brackets
- C: Hazard/Door Lock Buttons



1. Unclip the OEM panel using panel removal tools.



2. Unclip the air vents from the OEM panel and insert into the supplied facia.



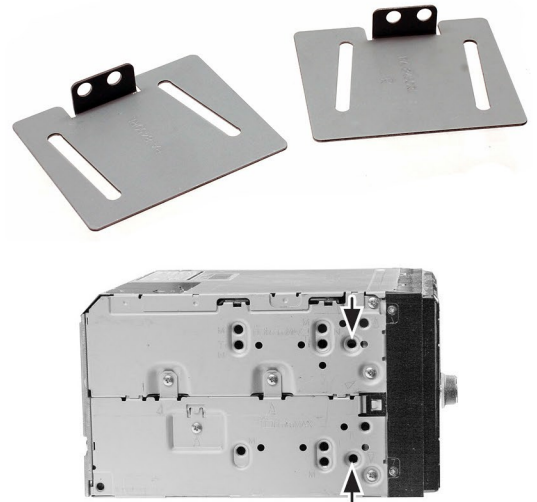
3. Remove the OEM head unit by removing the screws on the left and right hand side.



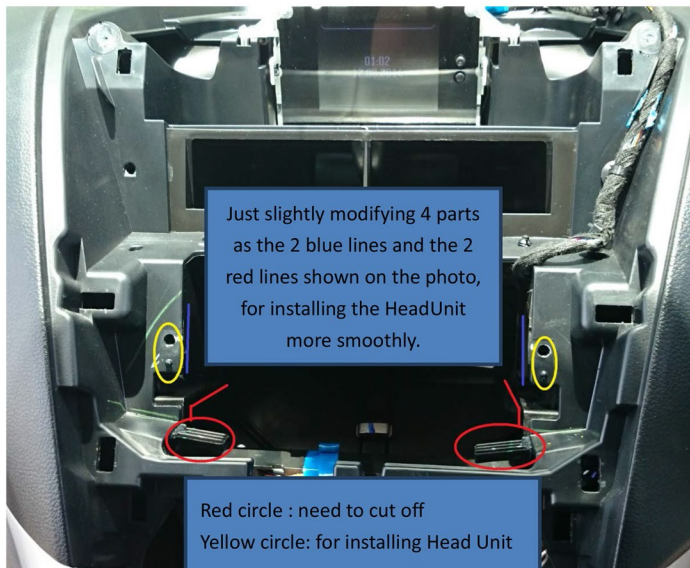
4. Unclip the plastic panel from around the OEM display and insert into the supplied fascia panel.



5. Attached the supplied brackets to the aftermarket head unit. Note the brackets are labelled 'L' and 'R' for left and right hand side.



6. Modify the dash cavity as shown (circled in red). The head unit can then be installed onto the mounting points (circled in yellow) using the original screws.



7. Take off the retaining clips from the OEM panel and insert into the supplied fascia. Clip the supplied fascia into place over the aftermarket head unit to complete the installation.



Note: The pink wire attached to buttons is for illumination power.