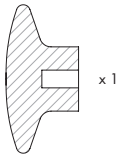


HALO

ASSEMBLY INSTRUCTION

CONTENT



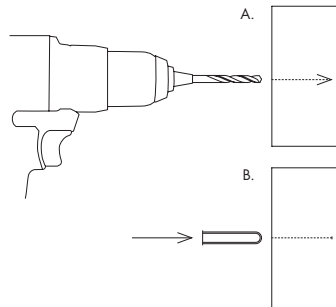
x 1
Torx screw
Set Screw
M6x48

TOOLS NEEDED:

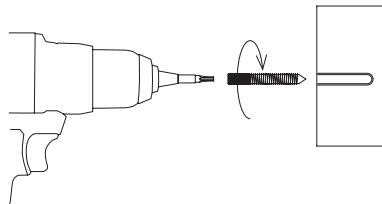
Drill, plug, Torx screwdriver or bit.

1. Drill a hole and add a plug.

See Wall Mounting Guide for the correct plug for your wall.

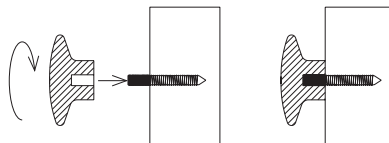


2. Use a Torx screwdriver and add the screw to the plug.



3. Screw on your Halo.

Be careful not to tighten too hard to avoid damage inside.



WALL MOUNTING GUIDE

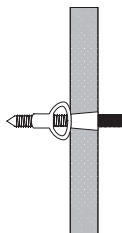
When mounting your Halo hook to a wall, it is important that it is mounted both securely and correctly. The best way to mount your product depends on the type of wall it is being attached to.

If a wall plug is required, it is vital that you find one that fits both the screw and the wall material.

If in doubt, ask for advice in your local hardware store. They will be able to assist you in finding the right plug.

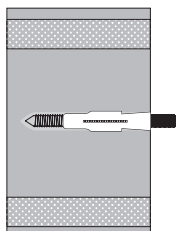
1. DRYWALL

Drywall is made from a porous material. When mounting, it is vital that you use a wall plug suitable for drywall.



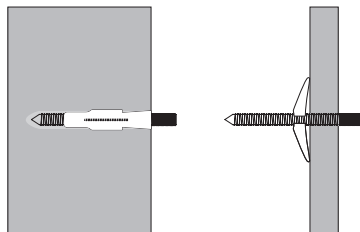
2. BRICK WALL

It is essential to use a wall plug when mounting onto a brick wall. Make sure that you drill holes in the bricks and not in the sealer surrounding the bricks.



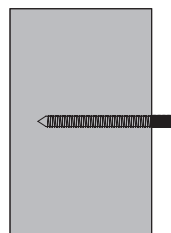
3. CONCRETE

When mounting to concrete walls, a wall plug is needed. Please be aware that concrete walls, especially in newer buildings can be thin, meaning a special plug is required.



4. WOOD

When mounting your product to a wooden surface, drill a 4,5 mm hole to prepare for the screw.



Halo wall hooks can also be used as cabinet handles.

1. Drill a 6mm hole and use a M6 bolt of a suitable length to allow for the thickness of the door or drawer face.
2. Screw on the wall hook. (Be careful not to over-tighten to avoid cracking the wall hook).

