

NEW PRODUCT RELEASE

R32 Large Capacity High Static Ducted

Fujitsu General introduces its new R32 Large Capacity High Static Ducted series (18kW–22.4kW). This new range is the latest addition to the R32 ducted lineup offering great energy efficiency, flexible installation, and smart climate control, delivering strong performance for both residential and commercial installations.

R32

REFRIGERANT

65 MODEL
NOW AVAILABLE
IN SINGLE PHASE
AND 3 PHASE



ARTH65/72/90KHTA

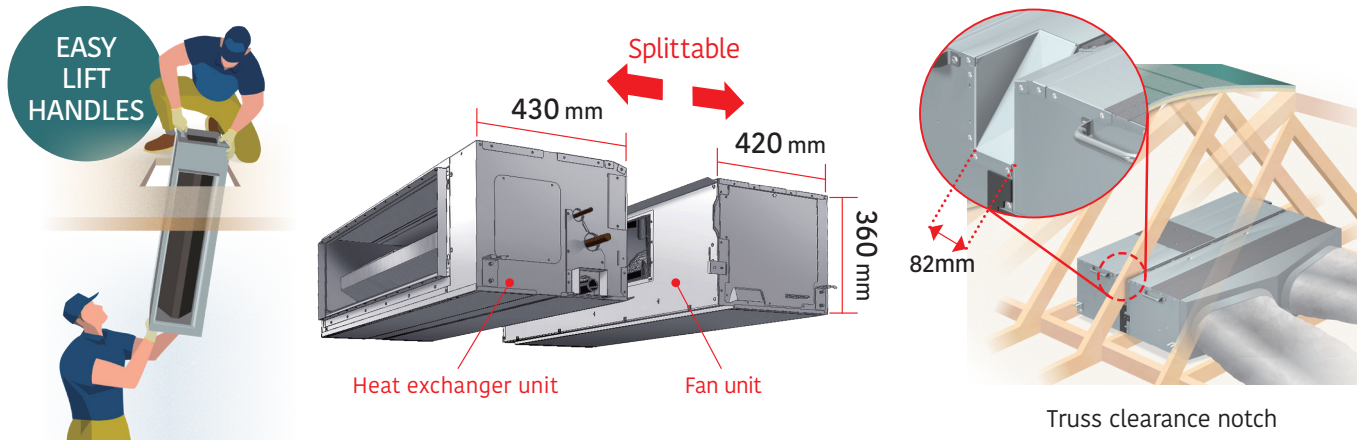
UP TO
108kg
LIGHTER!
72 & 90 MODELS



AOTH65KBTA,
AOTH65/72/90KRTA

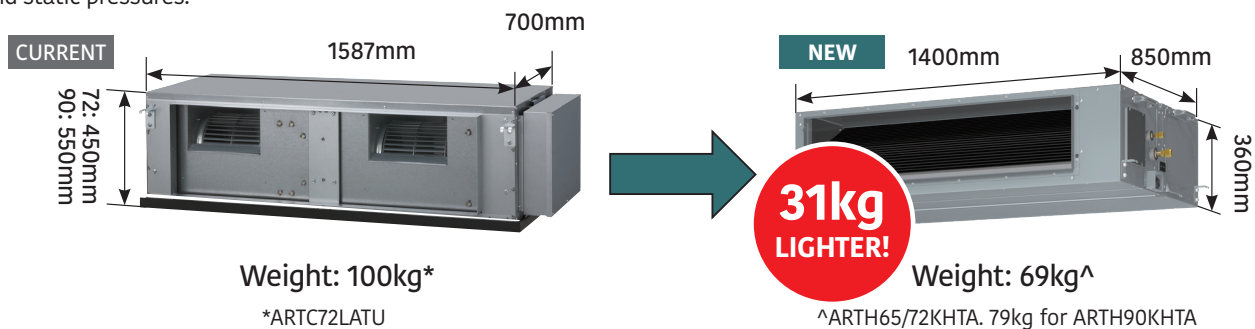
Designed for Easy Installation

The indoor unit can be split into a fan module and a heat exchanger, with integrated handles for easier in-roof installation. This design is ideal for retrofitting existing homes, as each component fits through an access panel and can be reassembled in the ceiling. A truss clearance notch on one side of the unit further enhances installation flexibility in tight spaces.



Compact and Lightweight Indoor Units

The new indoor unit chassis is compact, lightweight and among the smallest in the industry while achieving the required airflow and static pressures.



31kg
LIGHTER!

Weight: 100kg*

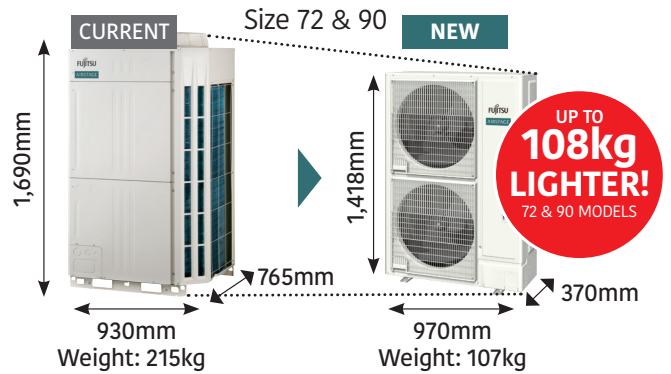
*ARTC72LATU

Weight: 69kg^

^ARTH65/72KHTA. 79kg for ARTH90KHTA

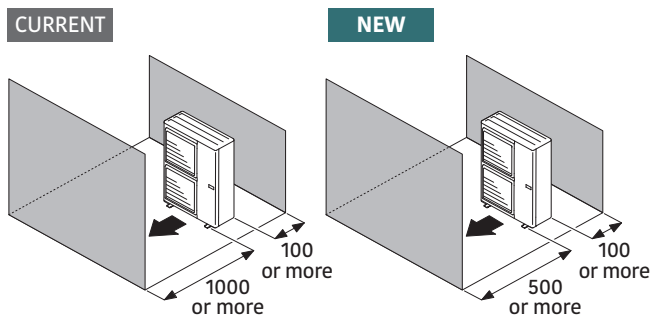
Outdoor Units Designed for Flexibility

The new outdoor units are all horizontal air discharge with a huge reduction in footprint and weight compared to the previous range. Specifically designed to meet the increasing need for air conditioning systems suitable for large homes on smaller blocks of land, the 370mm deep outdoor unit provides flexibility when finding an appropriate installation location for the unit.



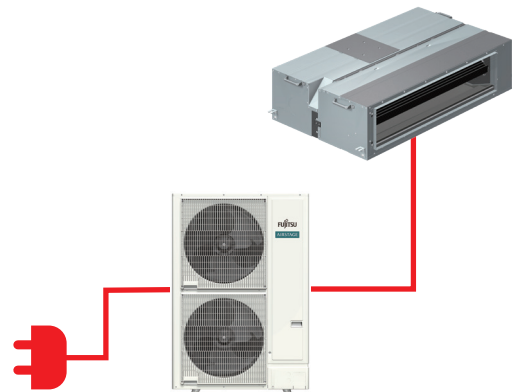
Reduced Clearance for Compact Layouts

When obstacles are present at both the front and rear, the front clearance is now reduced to 500mm (previously 1000mm) This gives more flexibility without compromising airflow or performance, making it ideal for compact layouts.



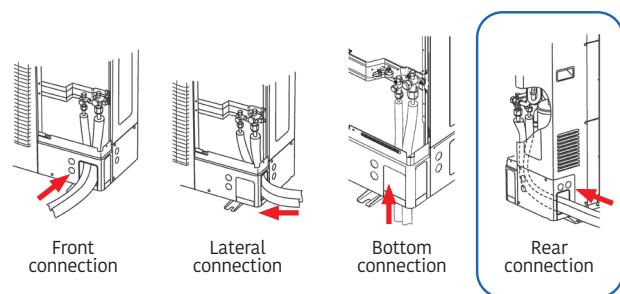
Improved Power Supply Configuration

The new models have an improved power supply configuration, with the indoor units now all powered by the outdoor unit, reducing installation time and cost.



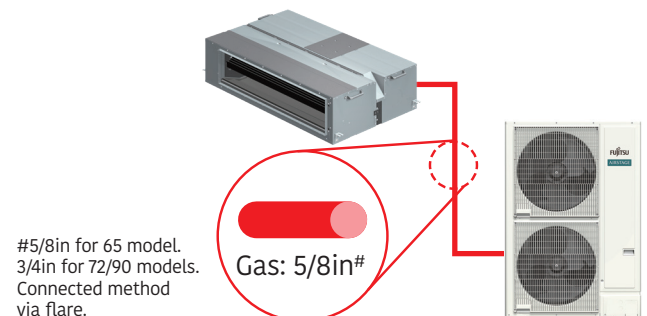
4 Piping Connection Options

Previous models were limited to 2-3 piping connection options, while the new models have up to 4, including a new rear piping connection for added ease of install.



Reduced Pipe Sizes for Gas and Liquid

The new models feature a reduced size in gas pipe diameter. The pipe connection method has also changed from brazed to flared for easier and faster installs.



Fujitsu General Assist

Technical Support

Fujitsu General Assist deploys Fujitsu trained technicians in Sydney, Melbourne, Brisbane, Adelaide and Perth and provides access to dedicated Service Agents in all other parts of Australia. These technicians are well equipped with the necessary tools and spare parts to enable them to resolve issues onsite, promptly, offering customers a high first time fix rate and seamless experience.

Exceptional After Sales Service

At Fujitsu, we pride ourselves on providing exceptional customer service. Fujitsu General Assist is our in-house customer care and technical support department which was implemented to deliver a high level of support and accessibility to our customers.



Peace of Mind

Fujitsu believe in the quality and reliability of every air conditioner we sell, providing a 5 years warranty for domestic applications.



Advanced Control and Connectivity

Featuring a standard touch-panel zone controller, the unit also offers automatic static pressure adjustment, refrigerant cycle monitoring (via the optional UTY-RNRYT5), and seamless smart building integration via Modbus and wireless LAN.

This series is also compatible with our existing anywAir® technology ducted controller (optional) which provides Zone Control and Wi-Fi control via a wall mounted touch pad. This enables variable airflow and room temperature management, enhancing comfort and energy savings. Remote access is also available using the anywAir® App, giving users control of their ducted systems anytime, anywhere with selected smartphone and tablet devices.

Standard controller



LCD Touch Panel Controller
UTY-RNRT

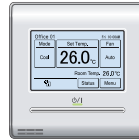
Available optional controllers



anywAir® technology ducted controller
UTY-ANV2



anywAir® Technology Wi-Fi Adaptor II
SET-UTY-NXT



LCD Touch Panel Controller
UTY-RNRYT5



LCD Simple Controller with Operation mode
UTY-RSRYT



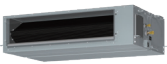
LCD Simple Controller without Operation mode
UTY-RHRYT



Kagami LCD Touch Panel Controller
UTY-RVRY

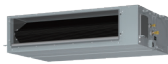
Key Specifications

ARTH65KHTA



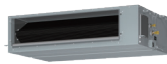
AOTH65KBTA
(Single Phase)

ARTH65KHTA



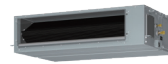
AOTH65KRTA
(Three Phase)

ARTH72KHTA



AOTH72KRTA
(Three Phase)

ARTH90KHTA



AOTH90KRTA
(Three Phase)

Key Specs

- Cooling Capacity (Min-Max): 18kW (5.5-20kW)
- Heating Capacity (Min-Max): 20kW (5.5-22.4kW)
- Outdoor Breaker: 32A 1Ph & 16A 3Ph
- Pipe Size: 3/8 - 5/8
- Indoor Dimensions (mm): 360 x 1400 x 850
- Outdoor Dimensions (mm): 1418 x 970 x 370

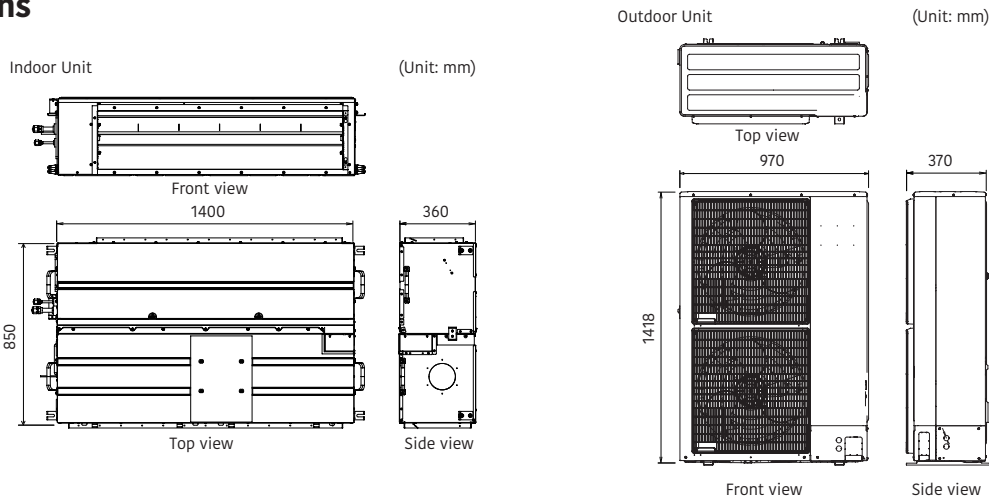
Key Specs

- Cooling Capacity (Min-Max): 20kW (6-22.4kW)
- Heating Capacity (Min-Max): 22.4kW (6-25kW)
- Outdoor Breaker: 20A 3Ph
- Pipe Size: 1/2 - 3/4
- Indoor Dimensions (mm): 360 x 1400 x 850
- Outdoor Dimensions (mm): 1418 x 970 x 370

Key Specs

- Cooling Capacity (Min-Max): 22.4kW (6.5-26kW)
- Heating Capacity (Min-Max): 25kW (6.5-30kW)
- Outdoor Breaker: 20A 3Ph
- Pipe Size: 1/2 - 3/4
- Indoor Dimensions (mm): 360 x 1400 x 850
- Outdoor Dimensions (mm): 1418 x 970 x 370

Dimensions



Optional Parts

Wired Remote Controller:	UTY-RNRYT5, UTY-RVRY	External Input & Output PCB Bracket:	UTZ-GXNA	KNX® Converter:	UTY-VKSX
Simple Remote Controller:	UTY-RSRYT, UTY-RHRYT	External Connect Kit:	UTY-XWZXZG	MODBUS® Converter:	UTY-VMSX
Wireless Remote Controller:	UTY-LBTYM	Network Converter For Single Split (DC Power Supply Type):	UTY-VTGX	External Switch Controller:	UTY-TERX
External Input & Output PCB:	UTY-XCSX	Network Converter For Single Split (AC Power Supply Type):	UTY-VTGXV	Drain Pump Kit:	UTZ-PX1NAB

Specifications

Set Code			SET-ARTH65KHTA	SET-ARTH65KHTA-3PH	SET-ARTH72KHTA-3PH	SET-ARTH90KHTA-3PH	
Model No.	Indoor unit		ARTH65KHTA	ARTH65KHTA	ARTH72KHTA	ARTH90KHTA	
	Outdoor unit		AOTH65KBTA	AOTH65KRTA	AOTH72KRTA	AOTH90KRTA	
Power Source	V / Ph / Hz		220-240 / 1 / 50	380-415 / 3 / 50			
Capacity	Cooling (Rated (Min - Max))	kW	18.0 (5.5 - 20.0)	18.0 (5.5 - 20.0)	20.0 (6.0 - 22.4)	22.4 (6.5 - 26.0)	
	Heating (Rated (Min - Max))	kW	20.0 (5.5 - 22.4)	20.0 (5.5 - 22.4)	22.4 (6.0 - 25.0)	25.0 (6.5 - 30.0)	
Input Power	Cooling (Rated (Max))	kW	5.61	5.61	6.16	7.42	
	Heating (Rated (Max))	kW	5.24	5.24	5.82	6.70	
EER	Cooling	kW / kW	3.21	3.21	3.25	3.02	
COP	Heating	kW / kW	3.82	3.82	3.85	3.73	
Star Rating	Cooling: Hot/Average/Cold		3.0 / 2.5 / 3.0	3.0 / 2.5 / 3.0	2.5 / 2.5 / 2.5	2.0 / 2.0 / 2.0	
	Heating: Hot/Average/Cold		3.0 / 2.5 / 1.5	3.0 / 2.5 / 1.5	3.0 / 2.5 / 1.5	2.5 / 2.0 / 1.5	
TCSPF ¹	Residential (Hot/Average/Cold)	kW	4.532 / 4.343 / 4.585	4.532 / 4.343 / 4.585	4.396 / 4.214 / 4.415	3.964 / 3.804 / 3.967	
HSPF ²	Residential (Hot/Average/Cold)	kW	4.503 / 4.001 / 3.446	4.503 / 4.001 / 3.446	4.651 / 4.047 / 3.402	4.170 / 3.615 / 3.058	
Running Current	Cooling/Heating		amps	24.60 / 23.00	8.60 / 8.10	9.90 / 9.50	11.70 / 10.60
Outdoor Breaker			amps	32	16	20	20
Moisture Removal			l/hr	4.00	4.00	5.30	4.60
Sound Pressure Level ³	Indoor (Cooling)	High/Quiet	dBA	44 / 35	44 / 35	46 / 39	50 / 42
	Indoor (Heating)	High/Quiet		44 / 35	44 / 35	46 / 39	50 / 42
	Outdoor (Cooling/Heating)	High		57 / 58	57 / 58	59 / 61	60 / 62
Sound Power Level	Outdoor	High		74	74	75	76
Static Pressure Range	Min - Max		PA	60 to 200	60 to 200	60 to 200	60 to 200
Air Circulation	Indoor (Cooling)	High Fan	l/sec	1,139	1,139	1,194	1,400
	Indoor (Heating)	High Fan		1,139	1,139	1,195	1,400
Dimensions H x W x D	Indoor		mm	360 × 1,400 × 850	360 × 1,400 × 850	360 × 1,400 × 850	360 × 1,400 × 850
	Outdoor			1,418 × 970 × 370	1,418 × 970 × 370	1,418 × 970 × 370	1,418 × 970 × 370
Net Weight	Indoor		kg	69	69	69	79
	Outdoor			101	102	107	107
Connection Pipe Diameter (Liquid/Gas)			mm	9.52 / 15.88	9.52 / 15.88	12.7 / 19.05	12.7 / 19.05
Pipe Length (Max (Precharged))			m	75 (30)	75 (30)	75 (30)	75 (30)
Max Height Difference			m	30	30	30	30
Operation Range	Outdoor (Min - Max)	Cooling	°CDB	-15 to 50	-15 to 50	-15 to 50	-15 to 50
		Heating		-20 to 24	-20 to 24	-20 to 24	-20 to 24
Refrigerant	Type			R32	R32	R32	R32
	Charge		g	3,800	3,800	4,500	4,500

¹ Total Cooling Seasonal Performance Factor

² Heating Seasonal Performance Factor

³ Measured values in manufacturer's anechoic chamber. Because of the surrounding sound environment, the sound levels measured in actual installation conditions might be higher than the specified values here.

Please refer to specifications before installation and servicing this product. Only persons and/or companies qualified and experienced in the installation, service and repair of refrigerant products should be permitted to do so. The purchaser must ensure that the person and/or company who is to install, service or repair this air conditioner has qualifications and experience in refrigerant products. Suitable access for warranty and service is required. Future improvement, specifications, designs of product and availability are subject to change without notice. All Capacity and Energy Efficiency ratings are based on AS/NZS3823.2. Running current is at rated conditions (AS3823) and does not include compressor start-up or variations in power supply and load conditions.

Note: Specifications are based on the following conditions.

Cooling: Indoor temperature of 27°CDB / 19°CWB, and outdoor temperature of 35°CDB / 24°CWB.

Heating: Indoor temperature of 20°CDB / 15°CWB, and outdoor temperature of 7°CDB / 6°CWB.

Pipe length: 7.5m; Height difference between outdoor unit and indoor unit: 0m. Voltage: 230V.

Actual products' colours may be different from the colours shown in this printed material. UTY-ANY2, Apple, the Apple logo, iPhone and Siri are trademarks of Apple Inc., registered in the U.S. and other countries. App Store is a service mark of Apple Inc. ©2019 Google LLC All rights reserved. Google Play and the Google Play logo are trademarks of Google LLC. Other trademarks and tradenames are acknowledged to be the copyright of their respective holders.



FUJITSU GENERAL AUSTRALIA
 ABN 55 001 229 554
 A SUBSIDIARY OF FUJITSU GENERAL