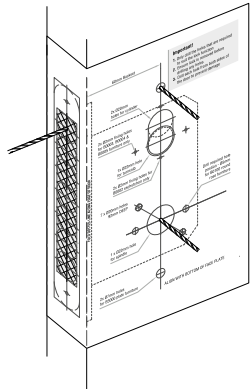
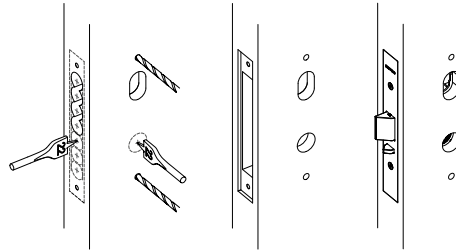


Mortice Lock Installation

1. Fold mortice lock template on door edge with lever spindle line at desired height (approx 1000mm from floor). Mark holes ready for drilling. Drill 2mm pilot holes for the furniture **from both sides of the door**.

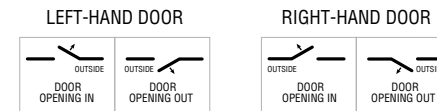
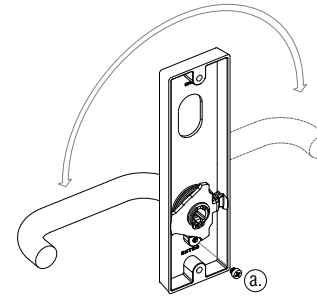


2. Only drill the holes that are required to suit the lock function. Drill each hole from both sides of the door to prevent damage. Insert and fix mortice lock ensuring mortice lock is functioned to desired setup. The faceplate can be fixed later if cylinder or adaptors need to be installed.



Lever Handing

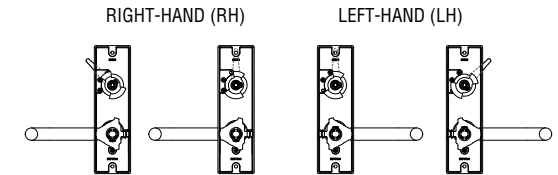
3. Hand the lever according to the mounting side by removing the (a.) cam stopper screw and rotating the lever. Refasten the cam stopper screw when lever is in desired position.



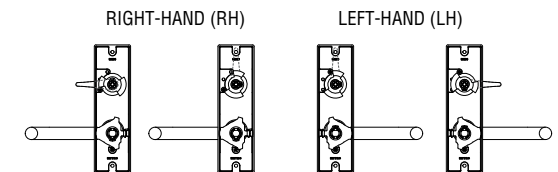
Turnsnib Handing - B3800/B3900 Only

4. Adjust position of screw stoppers on back of B3800 (DDA turnsnib) for handing. Adjust screw stoppers for the B3900 (emergency release) to the opposite handing of the B3800 plate. Eg. B3800 – 45 Deg LH & B3900 – 45 Deg RH Setup.

45° ROTATION SETTING & HANDING (A0100SSSM)

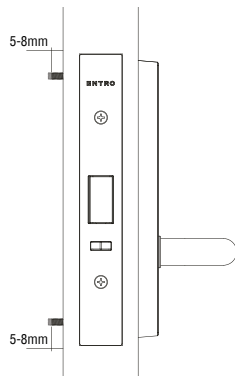


90° ROTATION SETTING & HANDING



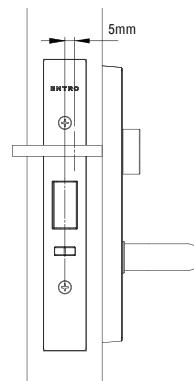
Fixing Screw Preparation

5. Place internal plate against the door and insert fixing screws provided through the door fixing holes. Ensure fixing screws are protruding min. 5mm and max. 8mm past the door face and cut to size if necessary.



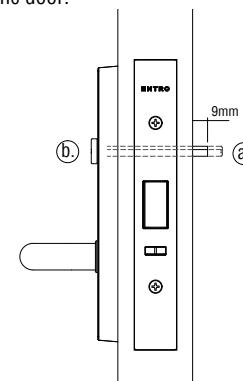
Turnsnib Setup - B3300 Only

6. Place B3300 turnsnib plate against the door with the turnsnib tailpiece against the edge of the door. Mark and cut the tailpiece 5mm from the centre of the mortice lock as shown.



Turnsnib Setup - B3800/B3900 Only

7. Place B3900 external plate against the door and insert star spindle (a.) provided through the door engaging both the Turn Adaptor and B3900 emergency release (b.) Mark and cut down spindle to 9mm from the face of the door.



Complete Setup

8. Insert spindle/s (a.) into lock as required, ensuring the spindle spring is attached to the rear of the spindle. If fitting B3800/B3900, ensure the Mortice Lock is locked and the B3800 Turn Snib & B3900 emergency release is in (b.) locked (diagonal/horizontal) position before connecting the plates with the star spindle (c.). Lightly fasten with the Qty 2 fixing screws provided. Check levers are both horizontal and test out anti-lockout function if necessary before firmly tightening fixing screws.

