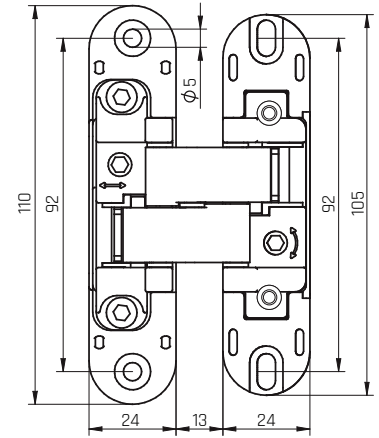
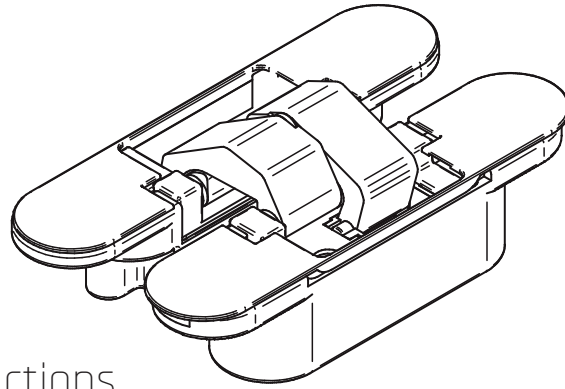
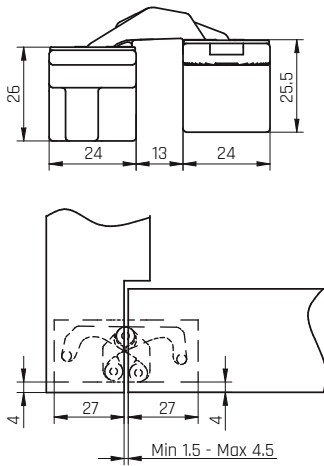


ENTRO



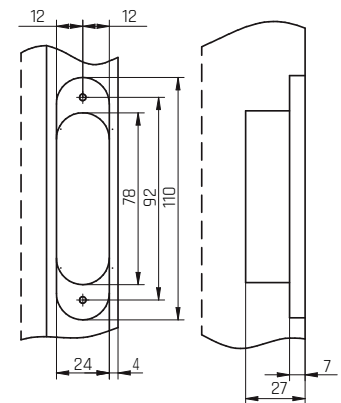
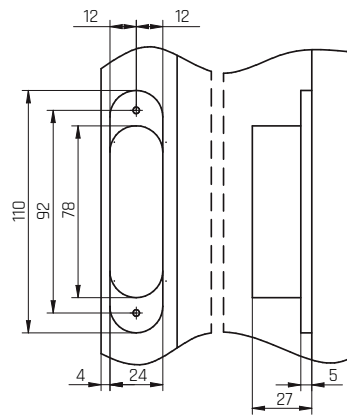
Installation Instructions J2040 / J2060 / J2080 Concealed Hinges



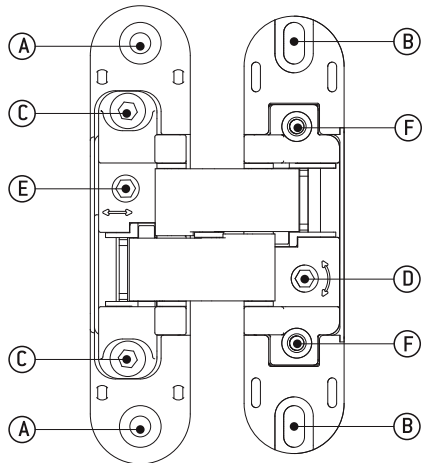
Milling

Frame

Door



Adjustment Instructions



A Fixing hole for hinge to the frame.

B Oval holes for vertical adjustment and fixing to door.

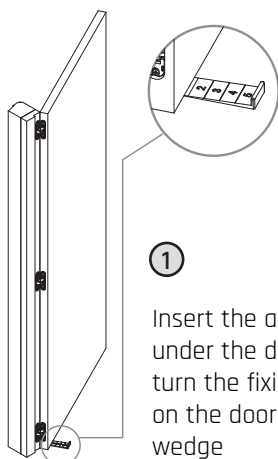
C Depth adjustment fixing screw

D Self-locking screw for lateral adjustment

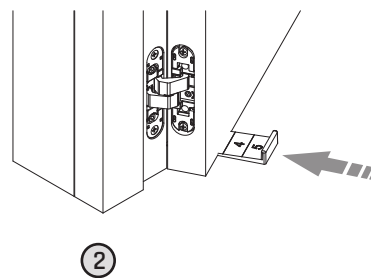
E Eccentric system for depth adjustment

F Optional D3.5mm screw for vertical fixing of door

Height Adjustment



Insert the adjustment wedge under the door and unscrew one turn the fixing screws of the hinge on the door; the door rests on the wedge

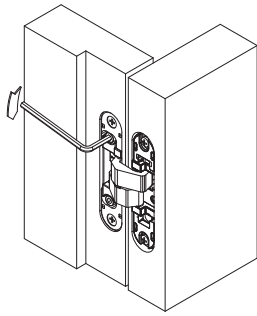


Slide the wedge under the door until achieve the desire measurement from the ground; re-lock the screws

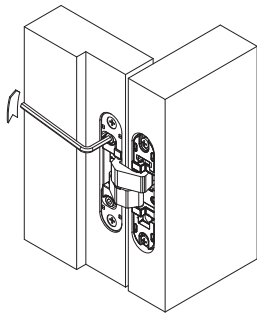
Optional

Screw in the optional screw D3.5mm for vertical fixing up to the stopper and pull the adjustment wedge

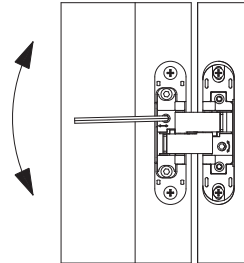
Depth Adjustment



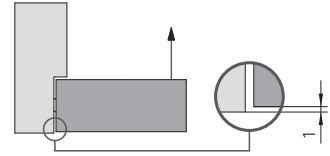
- 1
Unscrew the C screws
one turn.



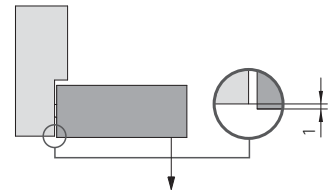
- 3
Fix the two C screws.



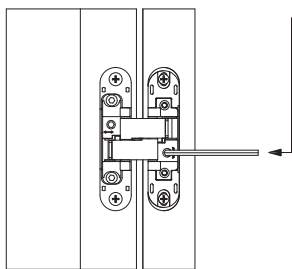
- 2
Acting on the eccentric E clockwise
the door moves to - 1 mm.



- 2
Acting on the eccentric E
counterclockwise the door moves
to + 1 mm.

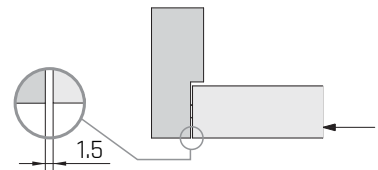


Side Adjustment



- 1
Act on D screw.

- 2
Acting on the D screw clockwise
the door moves to - 1.5 mm.



- 2
Acting on the D screw
counterclockwise the door
moves to + 1,5 mm.

