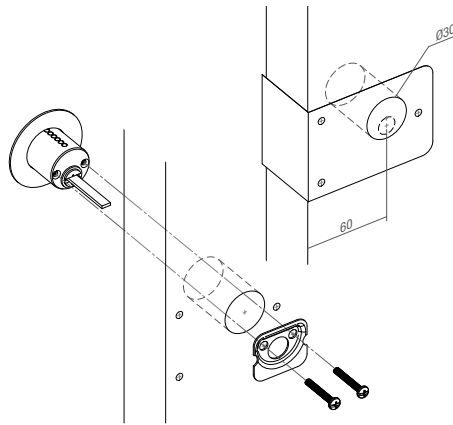
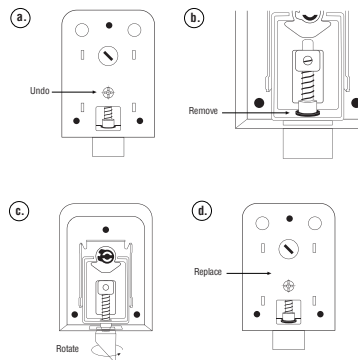


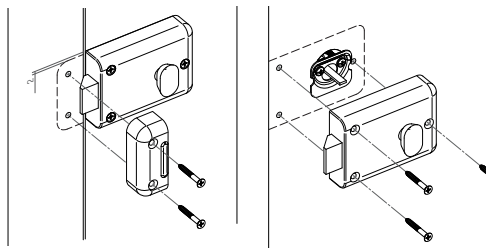
1. Fold template on door edge with centre line at desired height (approx 1000mm from floor). Marked holes ready for fixing. Drill 30mm hole as per template. Insert 203 Round Cylinder (A5001) and fix to backing plate with screws supplied.



2. Determine whether lock is required for open-in or open-out and reverse latch if required. **(a.)** Undo the screw to remove the backing plate. **(b.)** Remove circlip under latch, allowing latch to be removed. **(c.)** Rotate latch and replace circlip. **(d.)** Replace backing plate.



3. Ensuring 203 round cylinder tail piece is cut back to 10mm protrusion from mounting bracket, fit and secure the night latch to the door with screws supplied. Apply strike to the door jamb lower than the centreline, leaving 2mm for any door sag.



NIGHT LATCH & ROUND CYLINDER PREPARATION TEMPLATE

