

RIM HIGH LATCH

A2000



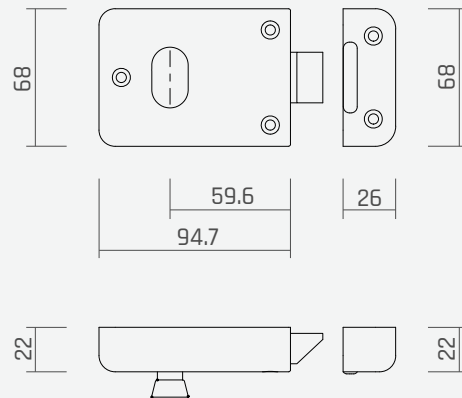
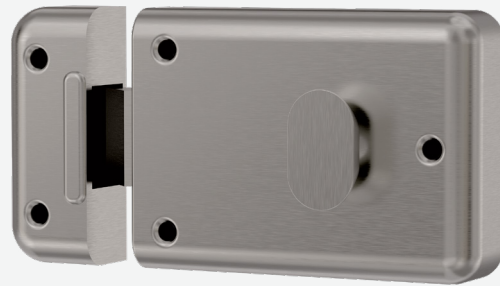
Fire Rated
AS1530.4

A2000 rim mounted night latches are designed primarily for use on outward opening cupboards in commercial applications. The latch bolt can also be rotated to suit inward opening setup.

Suits Round 201 Cylinders.

Specifications

- Backset: 60mm Standard
- Door Types: Timber or metal
- Suits 32-45 mm Door Thickness
- Reversible Latch Bolt
- Suits Round 201 Cylinders
- Fire Rated to AS1950 part 1
- Finishes: SSS



A2000SSS

RIM NIGHT LATCH SSS TO SUIT A5001 CYLINDERS