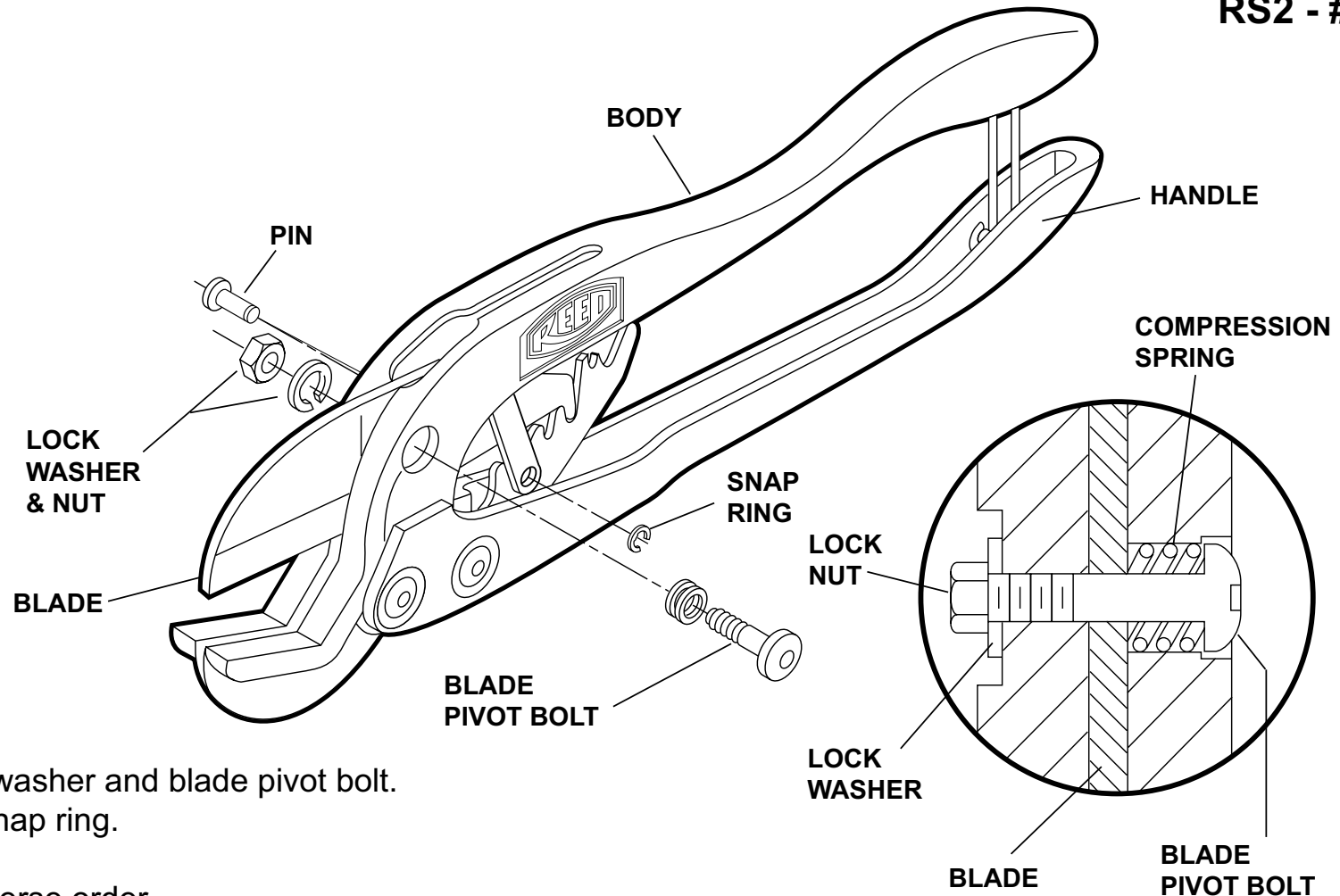




RS2 Ratchet Shears Maintenance Instructions

RS2 - #04177



REPLACE BLADE:

1. Remove nut, lock washer and blade pivot bolt.
2. Remove pin and snap ring.
3. Change blade.
4. Reassemble in reverse order.
5. When replacing blade pivot bolt, tighten and adjust until blade is snug, but moves freely.

Be sure lock washer and nut are tight.

Replacement Blade: RS2B #94176

Replacement Ratchet Assembly: RS2R #94178



RS2 Ratchet Shears Operating Instructions

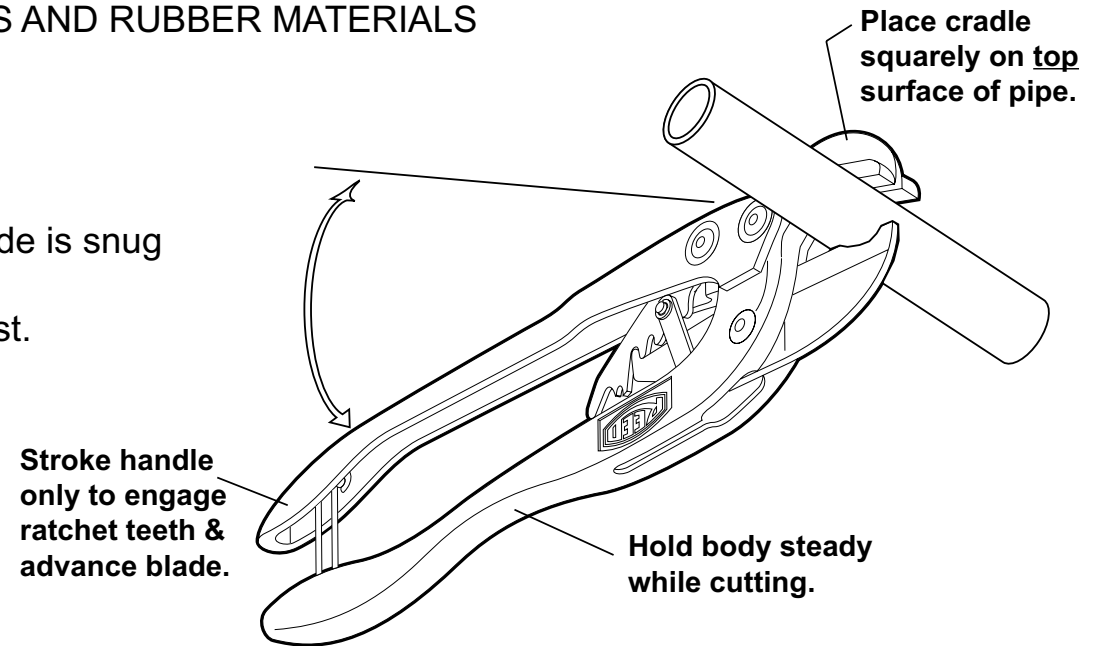
CUT: PE, PEX, ABS, PVC, CPVC, AND SIMILAR PLASTICS AND RUBBER MATERIALS
DOES NOT CUT METAL OR REINFORCED TUBING

HELPFUL HINTS:

- The blade pivot bolt assembly must be adjusted so the blade is snug and the locknut must be kept **locked tight** for proper operation of the ratchet. After initial wear in, readjust. Loosen locknut, tighten pivot bolt, tighten locknut.
- To prevent cracking of cold pipe, warm the pipe and use slow, even strokes.
- Light oil on mechanism prevents rusting and reduces friction.
- Rotate shears slightly around very flexible thin pipe or tubing to assist in cutting.

WARNING!

- **Keep fingers clear when pulling handles apart and when cutting.**
- Wear eye protection when cutting cold or brittle PVC or other hard plastic. Pipe can crack or shatter. To help prevent cracking, warm the pipe and use slow, even strokes.
- Store shears in closed and latched position to prevent damage to blade and body.



NOTE: For best results, use tool as shown above.

Reed Manufacturing Co.
1425 West 8th St.
Erie, PA 16502 USA



Phone: 800-666-3691 or 814-452-3691
Fax: 800-456-1697 or 814-455-1697

1196 - #50335