

Data Sheet for Article: MG952004-A

Current transformer 40/5A 21 mm diameter, class 3

Input current 40A, IP Rating IP20, Class 3



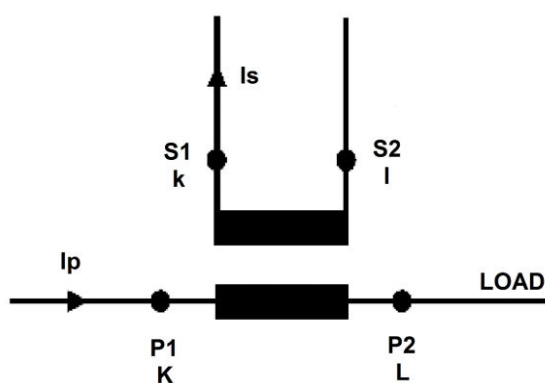
Technical Data

Note	The converter is not allowed to be operated with open secondary side, because this leads to a dangerous overvoltage at the secondary side and overheating of the converter!!! (EN60044-1/A2) Therefore, when disconnecting the measuring device, meter or power analyzer, short-circuit the secondary side.
Intended use	for cables up to diameter 21 mm
Product standard	BS3938 EN 61869-2 BS7626
Cut-out size (mm)	Ø21
Specifications	
Rated current primary side Ipr (A)	40
Rated current secondary side Isr	5A
Housing	
Housing material	Polycarbonate, self-extinguishing Class V0 according to UL-94
IP Rating	IP20

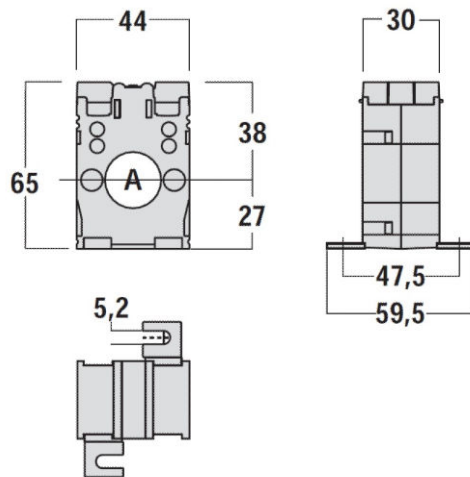
Technical Data - continued

Mounting method	Optional: DIN rail adapter (EN50022) screwable for mounting on panel
Gewicht (g)	180
Connections	
Winding secondary side	max. 2 separate wires 2,5mm ² Screw terminals
Accuracy classes	
Burden	Class 3 (1VA)

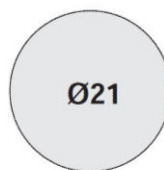
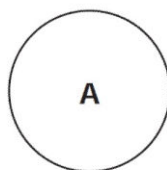
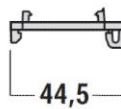
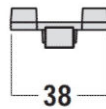
Schaltbild



Maßbild



Option: Hutschienenadapter 35mm (EN 50022)
35mm rail mounting (EN 50022)



Primärschiene / Bar 16 x 12,5

SCHRACK Technik GmbH, AT-1235 Wien, Seybelgasse 13

www.schrack.com

Article Table

DESCRIPTION	Order No.
Current transformer 40/5A 21 mm diameter, class 3 Input current 40A, IP Rating IP20, Class 3	MG952004-A
Optional Accessories	
Digital CT kWh Meter 1A/5A (6A), 3phase, 2 tariffs, MID Measurement of supply and reference (2 directions)	MGX20006
Digital CT kWh Meter 1A/5A(6A), 3phase, 2 tariffs, MID, M-Bus Measurement of supply and reference (2 directions)	MGX20306
Digital CT kWh Meter 1A/5A(6A), 3phase, 2 tariffs MID, Modbus Measurement of supply and reference (2 directions), Modbus: selectable baud rates 300/600/1200/4800/9600	MGX20406