



# DORE ELECTRICS

INDUSTRIAL ELECTRICAL COMPONENTS

— EST. 1988 —

## DT502LSS

### STAINLESS STEEL DROP “T” HANDLE

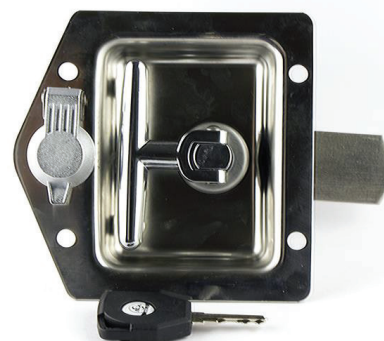
Mirror polished stainless steel face  
Stainless steel cam

Bright chrome-plated zinc handle

Zinc plated steel Shaft  
Zinc dust proof cap and bracket

K130 key

Handle load torque capability:  $\leq 27\text{Nm}$   
Cam loading capability:  $\leq 510\text{N}$



#### Dimensions

