



discovery[®]
.pearl

#FASCINATINGLY **NATURAL**

D
DENTAURUM
1886



#The beauty
of ceramics



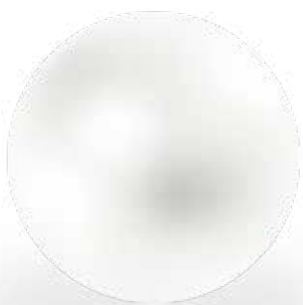
Naturally from Dentaureum – made in Germany.

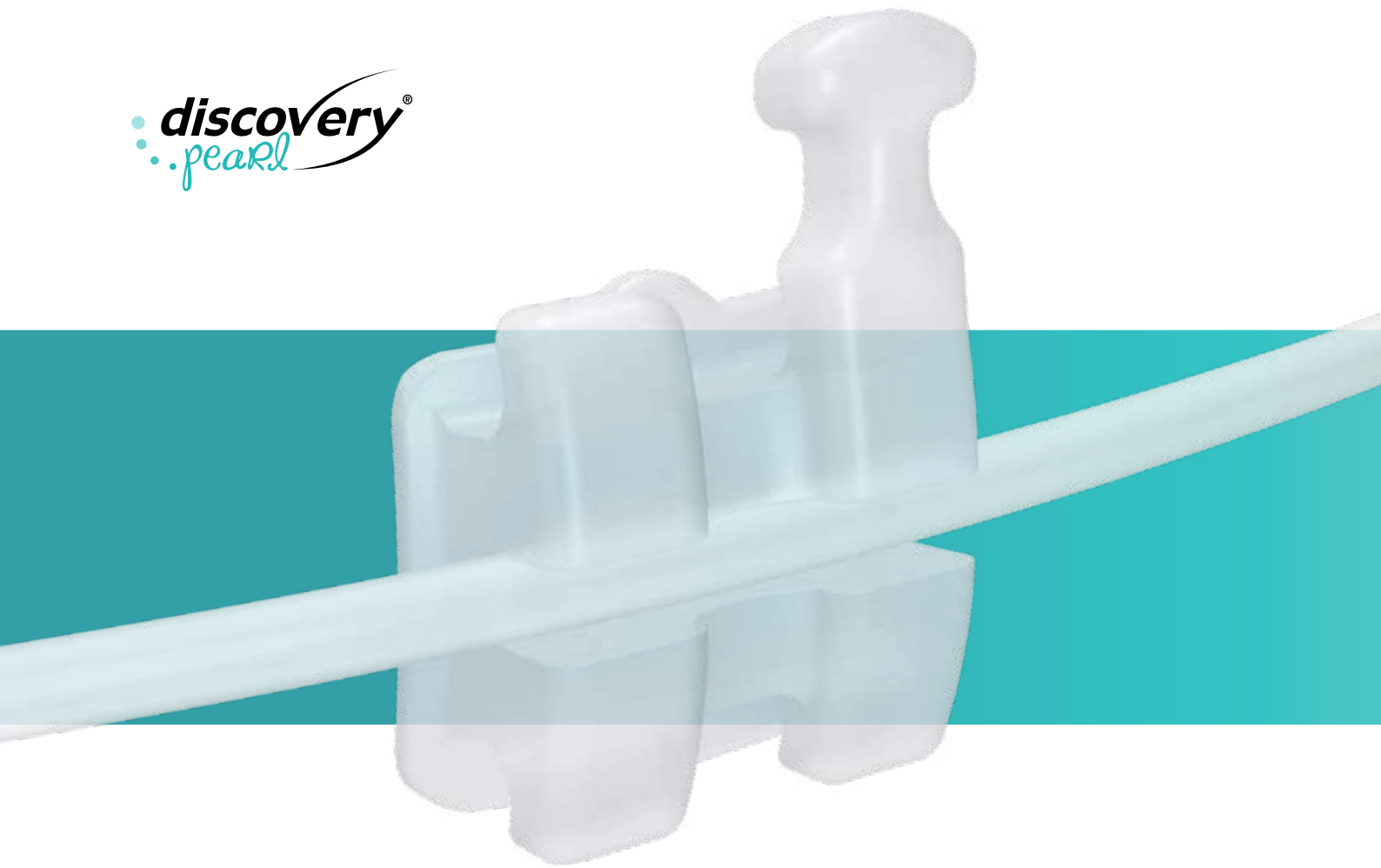
Since 1886 Dentaureum has stood for products that set standards in quality and performance. Our brackets are high-precision products – developed and manufactured in Germany.

More than three years of development have resulted in the highly aesthetic discovery® pearl bracket from Dentaureum: it is an all-ceramic bracket that transcends all the previous boundaries of aesthetics, quality and performance.

When bonded to the tooth, discovery® pearl adapts perfectly to the natural environment of the tooth due to its shade and high degree of translucency. With its perfect geometry and size, the innovative bracket seems virtually invisible in the mouth.

With discovery® pearl it is possible to fulfill the highest of demands for an aesthetic correction of the teeth – discreetly, efficiently and with a perfected naturalness.





discovery® pearl is an **all-ceramic bracket** without irritating metal inserts in the slot. It was designed **in one piece** and is manufactured in state-of-the-art production facilities using the CIM process (Ceramic Injection Molding). The proven **bracket geometry** of the discovery® family ensures easy **combination** between discovery® metal and ceramic brackets. There is a clear system of innovative **colored positioning guides** which helps allocate each bracket to the right tooth. The system also helps to align and position the bracket very easily.

#Perfect aesthetics

Highest degree of translucency.

The transparency of a ceramic material is determined by the intensity of reflected, absorbed or scattered light. The high level of translucency offered by discovery® pearl means patients can enjoy the natural aesthetics they wish to have. The brackets are barely visible and they merge with the natural tooth shade. They unite beauty with functionality.



Clinical situation.

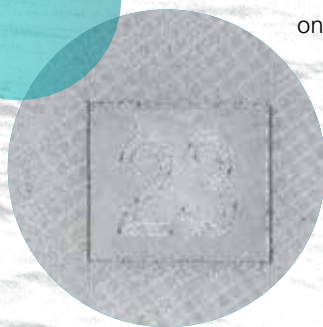
The aesthetics can hardly be surpassed. discovery® pearl brackets adapt so well to the natural surroundings of the teeth that it almost feels as if they were not there: a perfect, aesthetic solution.



#Proven function

REM images of base.

The laser structure on the base was developed at Dentaureum and has been used successfully on our metal brackets for years. The structure ensures the best possible retention and eases debonding.



Innovative positioning.

Positioning the bracket on the tooth is easy with the help of the colored positioning guides. The different colors help in allocating the bracket to the correct tooth.





The perfect **shade adaptation** to the natural tooth makes discovery® pearl look as if the bracket were not there.

The **optimal size** – small, yet tremendously effective – brings excellent therapy results. The **anatomical base** ensures a **perfect fit** on the tooth. The base is optimally adapted to the contour of the tooth so the bracket can be positioned easily. The best bonding and debonding results can be achieved with the **laser-structured base**. Removing the bracket from the tooth using the discovery® pearl debonding instrument is easy and gentle on the tooth.

#Accessories pearl



discovery® pearl debonding instrument.

Debonding is unproblematic thanks to the innovative discovery® pearl debonding instrument. The bracket can be easily and gently removed in one piece from the adhesive without excessive force. The adhesive remains on the tooth and can then be removed. As an alternative, bracket debonding pliers are available.

sterilizable

For easy and secure removal of **discovery® pearl ceramic brackets**.

REF	Quantity
019-001-00	1 piece



Orthodontic demonstration model discovery® pearl

Roth 22

Fitted with:

- discovery® pearl ceramic brackets, maxilla / mandible 5-5
- Ortho-Cast M-Series buccal tubes, maxilla / mandible 6
- Tensic® arches, maxilla / mandible
- Dentalastics® pearl ligature rings

Maxilla and mandible made of plastic, hinged

REF	Quantity
892-000-21	1 Stück

You can find suitable aesthetic archwires, e.g. rematitan® LITE White or Tensic® White in the Orthodontics Catalog under the section Wires / Arches / Accessories.

#Single bracket pearl



Roth 18/22

with positioning guide

Teeth	Torque	Angulation	In/Out	Hook	Width	REF (18)	REF (22)	Quantity
11	+ 12°	+ 5°	0.7 mm		3.1 mm	718-701-11	722-701-11	1 piece
21	+ 12°	+ 5°	0.7 mm		3.1 mm	718-701-21	722-701-21	1 piece
12	+ 8°	+ 9°	1.3 mm		2.7 mm	718-701-12	722-701-12	1 piece
22	+ 8°	+ 9°	1.3 mm		2.7 mm	718-701-22	722-701-22	1 piece
13	- 2°	+ 13°	0.7 mm	•	3.1 mm	718-741-13	722-741-13	1 piece
23	- 2°	+ 13°	0.7 mm	•	3.1 mm	718-741-23	722-741-23	1 piece
14	- 7°	0°	0.7 mm		3.1 mm	718-701-14	722-701-14	1 piece
24	- 7°	0°	0.7 mm		3.1 mm	718-701-24	722-701-24	1 piece
14	- 7°	0°	0.7 mm	•	3.1 mm	718-741-14	722-741-14	1 piece
24	- 7°	0°	0.7 mm	•	3.1 mm	718-741-24	722-741-24	1 piece
15	- 7°	0°	0.7 mm		3.1 mm	718-701-15	722-701-15	1 piece
25	- 7°	0°	0.7 mm		3.1 mm	718-701-25	722-701-25	1 piece
15	- 7°	0°	0.7 mm	•	3.1 mm	718-741-15	722-741-15	1 piece
25	- 7°	0°	0.7 mm	•	3.1 mm	718-741-25	722-741-25	1 piece



Teeth	Torque	Angulation	In/Out	Hook	Width	REF (18)	REF (22)	Quantity
41	- 1°	0°	1.3 mm		2.7 mm	718-701-41	722-701-41	1 piece
31	- 1°	0°	1.3 mm		2.7 mm	718-701-31	722-701-31	1 piece
42	- 1°	0°	1.3 mm		2.7 mm	718-701-42	722-701-42	1 piece
32	- 1°	0°	1.3 mm		2.7 mm	718-701-32	722-701-32	1 piece
43	- 11°	+ 7°	0.7 mm	•	3.1 mm	718-741-43	722-741-43	1 piece
33	- 11°	+ 7°	0.7 mm	•	3.1 mm	718-741-33	722-741-33	1 piece
44	- 17°	0°	0.7 mm		3.1 mm	718-701-44	722-701-44	1 piece
34	- 17°	0°	0.7 mm		3.1 mm	718-701-34	722-701-34	1 piece
44	- 17°	0°	0.7 mm	•	3.1 mm	718-741-44	722-741-44	1 piece
34	- 17°	0°	0.7 mm	•	3.1 mm	718-741-34	722-741-34	1 piece
45	- 22°	0°	0.7 mm		3.1 mm	718-701-45	722-701-45	1 piece
35	- 22°	0°	0.7 mm		3.1 mm	718-701-35	722-701-35	1 piece
45	- 22°	0°	0.7 mm	•	3.1 mm	718-741-45	722-741-45	1 piece
35	- 22°	0°	0.7 mm	•	3.1 mm	718-741-35	722-741-35	1 piece

Slot 18: 0.46 x 0.76 mm / 18 x 30
Slot 22: 0.56 x 0.76 mm / 22 x 30



McLaughlin-Bennett-Trevisi** 18/22

with positioning guide

Teeth	Torque	Angulation	In/Out	Hook	Width	REF (18)	REF (22)	Quantity
11	+ 17°	+ 4°	0.7 mm		3.1 mm	718-702-11	722-702-11	1 piece
21	+ 17°	+ 4°	0.7 mm		3.1 mm	718-702-21	722-702-21	1 piece
12	+ 10°	+ 8°	1.3 mm		2.7 mm	718-702-12	722-702-12	1 piece
22	+ 10°	+ 8°	1.3 mm		2.7 mm	718-702-22	722-702-22	1 piece
13	0°	+ 8°	0.7 mm	•	3.1 mm	718-742-13	722-742-13	1 piece
23	0°	+ 8°	0.7 mm	•	3.1 mm	718-742-23	722-742-23	1 piece
14	- 7°	0°	0.7 mm		3.1 mm	718-702-14	722-702-14	1 piece
24	- 7°	0°	0.7 mm		3.1 mm	718-702-24	722-702-24	1 piece
14	- 7°	0°	0.7 mm	•	3.1 mm	718-742-14	722-742-14	1 piece
24	- 7°	0°	0.7 mm	•	3.1 mm	718-742-24	722-742-24	1 piece
15	- 7°	0°	1.2 mm		3.1 mm	718-702-15	722-702-15	1 piece
25	- 7°	0°	1.2 mm		3.1 mm	718-702-25	722-702-25	1 piece
15	- 7°	0°	1.2 mm	•	3.1 mm	718-742-15	722-742-15	1 piece
25	- 7°	0°	1.2 mm	•	3.1 mm	718-742-25	722-742-25	1 piece



Teeth	Torque	Angulation	In/Out	Hook	Width	REF (18)	REF (22)	Quantity
41	- 6°	0°	1.3 mm		2.7 mm	718-702-41	722-702-41	1 piece
31	- 6°	0°	1.3 mm		2.7 mm	718-702-31	722-702-31	1 piece
42	- 6°	0°	1.3 mm		2.7 mm	718-702-42	722-702-42	1 piece
32	- 6°	0°	1.3 mm		2.7 mm	718-702-32	722-702-32	1 piece
43	0°	+ 3°	0.7 mm	•	3.1 mm	718-742-43	722-742-43	1 piece
33	0°	+ 3°	0.7 mm	•	3.1 mm	718-742-33	722-742-33	1 piece
44	- 12°	+ 2°	0.7 mm		3.1 mm	718-702-44	722-702-44	1 piece
34	- 12°	+ 2°	0.7 mm		3.1 mm	718-702-34	722-702-34	1 piece
44	- 12°	+ 2°	0.7 mm	•	3.1 mm	718-742-44	722-742-44	1 piece
34	- 12°	+ 2°	0.7 mm	•	3.1 mm	718-742-34	722-742-34	1 piece
45	- 17°	+ 2°	0.7 mm		3.1 mm	718-702-45	722-702-45	1 piece
35	- 17°	+ 2°	0.7 mm		3.1 mm	718-702-35	722-702-35	1 piece
45	- 17°	+ 2°	0.7 mm	•	3.1 mm	718-742-45	722-742-45	1 piece
35	- 17°	+ 2°	0.7 mm	•	3.1 mm	718-742-35	722-742-35	1 piece

Slot 18: 0.46 x 0.76 mm / 18 x 30
Slot 22: 0.56 x 0.76 mm / 22 x 30

** The Dentaureum version of this prescription is not claimed to be a duplication of any other, nor does Dentaureum imply that it is endorsed in any way by Drs. McLaughlin, Bennett and Trevisi.

#Assortment pearl

Assortment Roth



Roth 18/22

Hook on cuspid

Teeth	with positioning guide		without positioning guide		Quantity
	REF (18)	REF (22)	REF (18)	REF (22)	
13-11 / 21-23	718-701-03	722-701-03	718-701-73	722-701-73	6 pieces (1 bracket each)
15-11 / 21-25	718-701-05	722-701-05	718-701-75	722-701-75	10 pieces (1 bracket each)

Teeth	with setting aid		without positioning guide		Quantity
	REF (18)	REF (22)	REF (18)	REF (22)	
13-11 / 21-23 / 43-41 / 31-33	718-701-63	722-701-63	718-701-83	722-701-83	12 pieces (1 bracket each)
15-11 / 21-25 / 45-41 / 31-35	718-701-65	722-701-65	718-701-85	722-701-85	20 pieces (1 bracket each)

Slot 18: 0.46 mm x 0.76 mm / 18 x 30
Slot 22: 0.56 mm x 0.76 mm / 22 x 30



Roth 18/22

Hook on cuspid, first bicuspid and second bicuspid

Teeth	with positioning guide		without positioning guide		Quantity
	REF (18)	REF (22)	REF (18)	REF (22)	
15-11 / 21-25	718-741-60	722-741-60	718-741-80	722-741-80	10 pieces (1 bracket each)

Teeth	with setting aid		without positioning guide		Quantity
	REF (18)	REF (22)	REF (18)	REF (22)	
15-11 / 21-25 / 45-41 / 31-35	718-741-65	722-741-65	718-741-85	722-741-85	20 pieces (1 bracket each)

Slot 18: 0.46 mm x 0.76 mm / 18 x 30
Slot 22: 0.56 mm x 0.76 mm / 22 x 30



Roth 22

Hook on cuspid - with positioning guide

Brackets	Teeth	REF (22)	Quantity
discovery® pearl	15-11 / 21-25	891-404-00	20 pieces (je 1 Bracket)
discovery® smart	45-41 / 31-35		

Slot 22: 0.56 mm x 0.76 mm / 22 x 30

#Assortment pearl

Assortments MBT**

McLaughlin-Bennett-Trevisi** 18/22

Hook on cuspid

Teeth	with positioning guide		without positioning guide		Quantity
	REF (18)	REF (22)	REF (18)	REF (22)	
13-11 / 21-23	718-702-03	722-702-03	718-702-73	722-702-73	6 pieces (1 bracket each)
15-11 / 21-25	718-702-05	722-702-05	718-702-75	722-702-75	10 pieces (1 bracket each)

Teeth	with setting aid		without positioning guide		Quantity
	REF (18)	REF (22)	REF (18)	REF (22)	
13-11 / 21-23 / 43-41 / 31-33	718-702-63	722-702-63	718-702-83	722-702-83	12 pieces (1 bracket each)
15-11 / 21-25 / 45-41 / 31-35	718-702-65	722-702-65	718-702-85	722-702-85	20 pieces (1 bracket each)

Slot 18: 0.46 mm x 0.76 mm / 18 x 30
Slot 22: 0.56 mm x 0.76 mm / 22 x 30

** The Dentaaurum version of this prescription is not claimed to be a duplication of any other, nor does Dentaaurum imply that it is endorsed in any way by Drs. McLaughlin, Bennett and Trevisi.



McLaughlin-Bennett-Trevisi** 18/22

Hook on cuspid, first bicuspid and second bicuspid

Teeth	with positioning guide		without positioning guide		Quantity
	REF (18)	REF (22)	REF (18)	REF (22)	
15-11 / 21-25	718-742-60	722-742-60	718-742-80	722-742-80	10 pieces (1 bracket each)

Teeth	with setting aid		without positioning guide		Quantity
	REF (18)	REF (22)	REF (18)	REF (22)	
15-11 / 21-25 / 45-41 / 31-35	718-742-65	722-742-65	718-742-85	722-742-85	20 pieces (1 bracket each)

Slot 18: 0.46 mm x 0.76 mm / 18 x 30
Slot 22: 0.56 mm x 0.76 mm / 22 x 30

** The Dentaaurum version of this prescription is not claimed to be a duplication of any other, nor does Dentaaurum imply that it is endorsed in any way by Drs. McLaughlin, Bennett and Trevisi.



McLaughlin-Bennett-Trevisi** 22

Hook on cuspid - with positioning guide

Brackets	Teeth	REF (22)	Quantity
discovery® pearl	15-11 / 21-25	891-400-00	20 pieces (1 bracket each)
discovery® smart	45-41 / 31-35		

Slot 22: 0.56 mm x 0.76 mm / 22 x 30

** The Dentaaurum version of this prescription is not claimed to be a duplication of any other, nor does Dentaaurum imply that it is endorsed in any way by Drs. McLaughlin, Bennett and Trevisi.





CONTACT
DENTAURUM

Dentaurum GmbH & Co. KG



Turnstr. 31
75228 Ispringen · Germany



info@dentaurum.com
www.dentaurum.com



+49 72 31/803-0



ONLINE SHOP
SHOP.DENTAURUM.COM