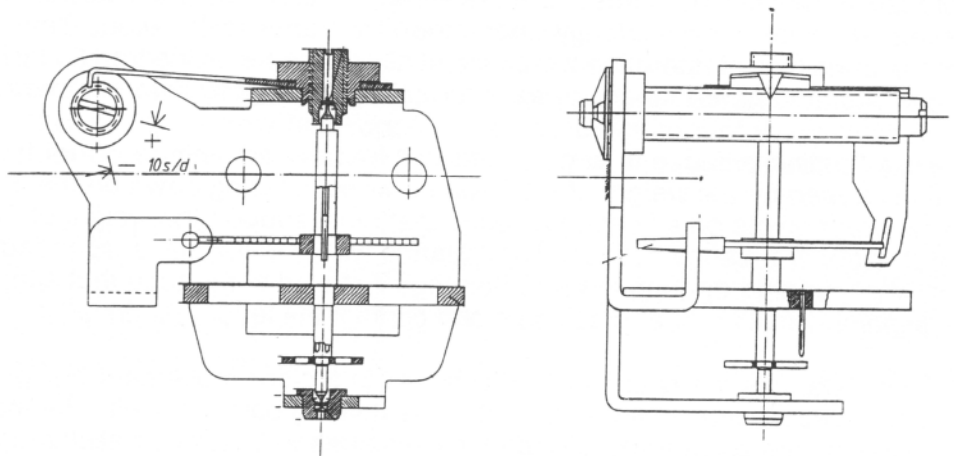


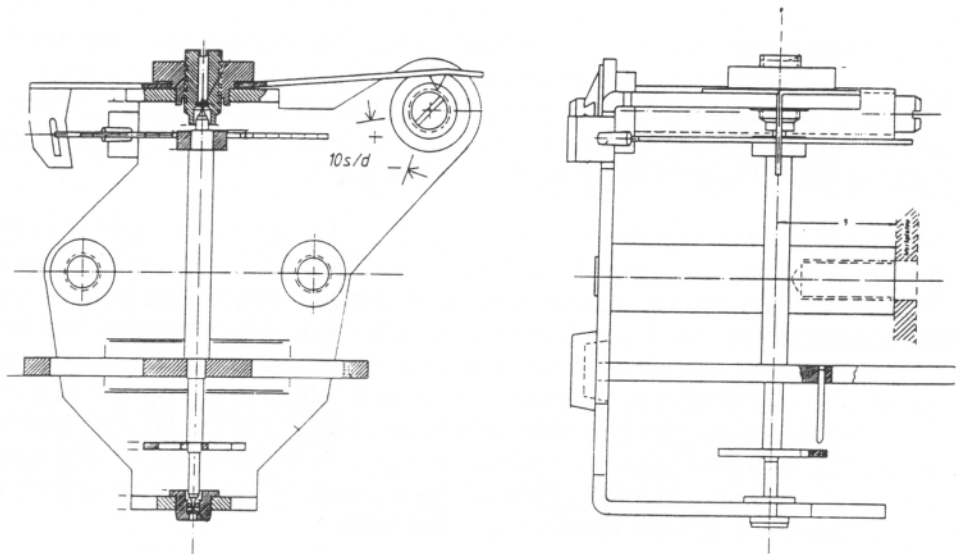
Hermle

will result in degraded performance and possible damage to the bearings. Approach the tightening process very carefully and make a series of small adjustments until the proper amount of endshake results.

Unlike the floating balance, rating adjustments are normally made by adding or subtracting weight from the balance wheel. Rating adjustments can be made beyond the range of the regulator by lengthening or shortening the hairspring and repinning it. Of course, this necessitates adjusting the beat to compensate for these adjustments. From a time saving standpoint it is usually wiser to replace a defective balance unit than to spend several hours regulating it or working with the hairspring. If the balance needs extensive adjustments, chances are it has more than one problem and replacing the complete unit is the wiser choice.



Balance Unit for Model 130



Balance Unit for Models:

140
150
340
350
1050