

WD-PRM6 PRE-RINSE MACHINE

STANDARD FEATURES:

- Rinses up to 120 baskets per hour
- 45 litre wash tank volume
- 0.9kW wash pump
- Reduced running costs by eliminating manual pre-rinsing
- Ability to use shorter wash programs
- Fully insulated
- Automatic hood lift

Upgrades and options are available, please contact Moffat for more details

TECHNICAL INFORMATION:

Dimensions

Width: 600mm
Depth: 658mm
Height: 1540mm

Water

Water supplied by main machine

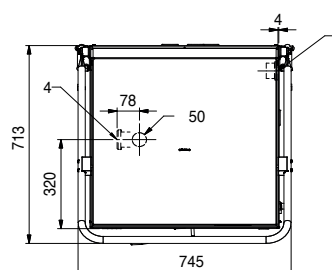
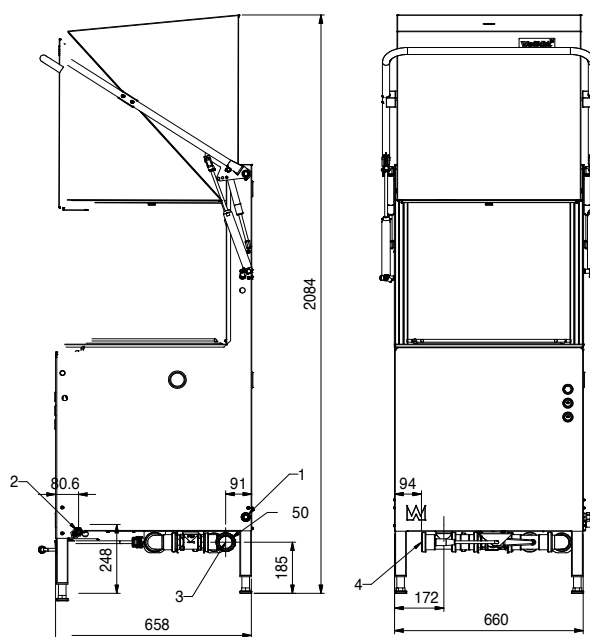
Waste

Connection: 50mm Ø
(not supplied)
Floor drain capacity 3 litres
per minute

Electrical

3P+N+E 400-415V 50/60Hz
0.9kW 10A Cordset supplied

*Refer operator manual for
complete installation instructions*



- 1 - Electrical connection
- 2 - Cold water connection R1/2" - hood lift
- 3 - Water connection Ø50mm int. from dishwasher
- 4 - Drain connection Ø50mm int.

Australia

moffat.com.au

Moffat Pty Limited
740 Springvale Road
Mulgrave
Victoria 3170
Australia
Telephone +613-9518 3888
Facsimile +613-9518 3833
vsales@moffat.com.au

New Zealand

moffat.co.nz

Moffat Limited
45 Illinois Drive
Izone Business Hub
Rolleston 7675
New Zealand
Telephone +64 3-983 6600
Facsimile +64 3-983 6660
sales@moffat.co.nz

In line with policy to continually develop and improve its products, Moffat Limited reserves the right to change specifications and design without notice.