



HOSHIZAKI

Distributor:



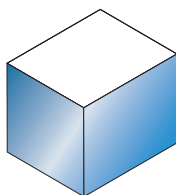
Chefs Hat Australia Pty. Ltd
131 Cecil St
South Melbourne, VIC 3205
p: +61 3 9682 1441
e: sales@chefshat.com.au

IM-65NE-LM

Cube Ice Maker

PRODUCT FEATURES

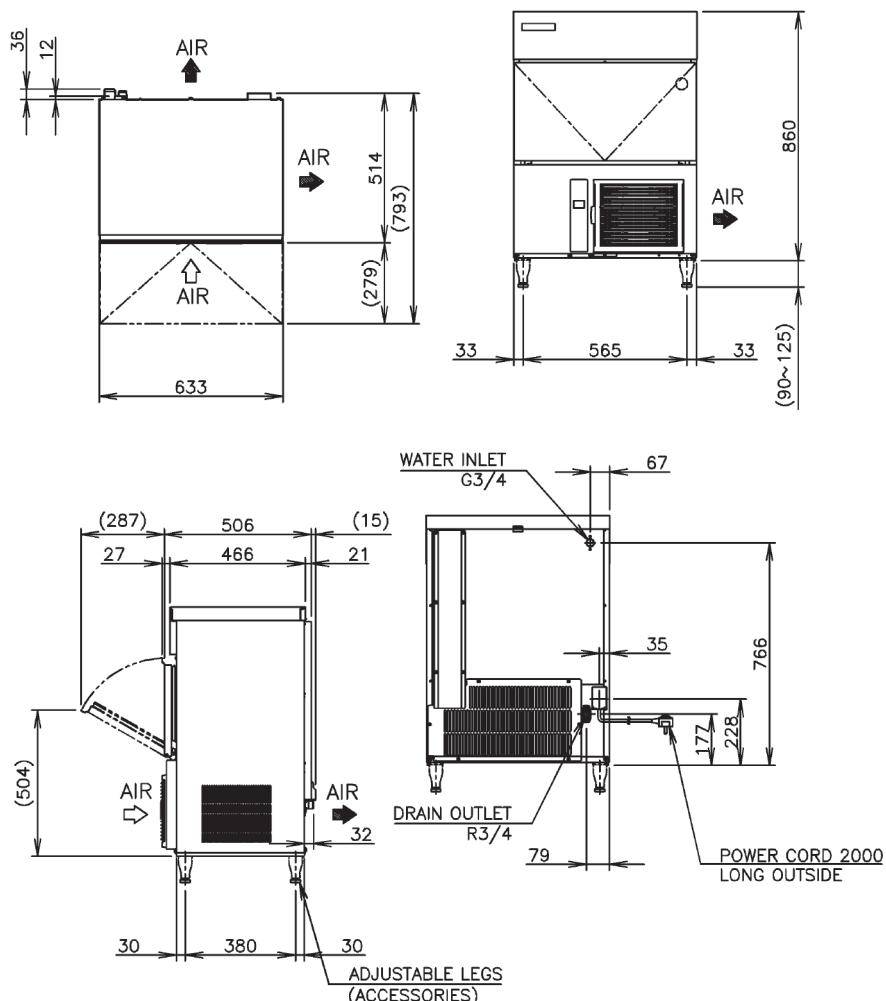
- New intelligent control circuit dedicated to saving power and water consumption.
- Inbuilt safety features - freeze cycle back up timer, defrost back up, low voltage & high amp protector.
- New 7 segment operational display panel for ease of use.
- Unique closed cell water circuit for ultimate contamination protection.
- Durable stainless steel exterior.
- Easily accessible and cleanable air filters reduce costly callouts.
- Exceptionally hard crystal clear cubes that melt slowly.
- Auto rinse and flush cycle.
- 3 year parts and labour warranty on entire unit, 5 year (parts only) on compressor & air cooled condenser coil.



Ice Type: Big Cube XXL
Size: 48 x 48 x 58mm / 110g



TECHNICAL DRAWING



PRODUCT SPECIFICATION

Production Capacity per 24hours	Approx. 40kg @10°C Air temp; 10°C Water Approx. 33kg @ 21°C Air temp; 15°C Water Approx. 25kg @ 32°C Air temp; 21°C Water
Max Storage Capacity	Approx. 26kg (Bin Control Setting Approx. 18kg)
Freeze Cycle Time	Approx. 62 Min
Ice Production Per cycle	Approx. 1.44kg/12pcs
Dimensions	633mm (W) x 506mm (D) x 950mm (H) (Units include adjustable legs 90-125mm)
Cooling	Air
Weight Net/Gross (kg)	53 / 61
AC Supply Voltage	1 PHASE 220-240V 50Hz / 10AMP Plug
Amperage	Running: 2.5A Rated: 2.5A Starting: 15A R134a / 230g
Refrigerant Charge	Ambient Temp.: 1-40°C
Operating Conditions	Water Supply Temp.: 5-35°C Water Supply Pressure: 0.07-0.8MPa (0.7-8bar) Voltage Range: Rated Voltage ±6%



Descriptions and specifications are subject to change at any time, without notice.
Illustrations for demonstration purposes.

Copyright © 2020 Hoshizaki Lancer Pty Ltd. All right reserved. E&OE Date: Sept 2020