

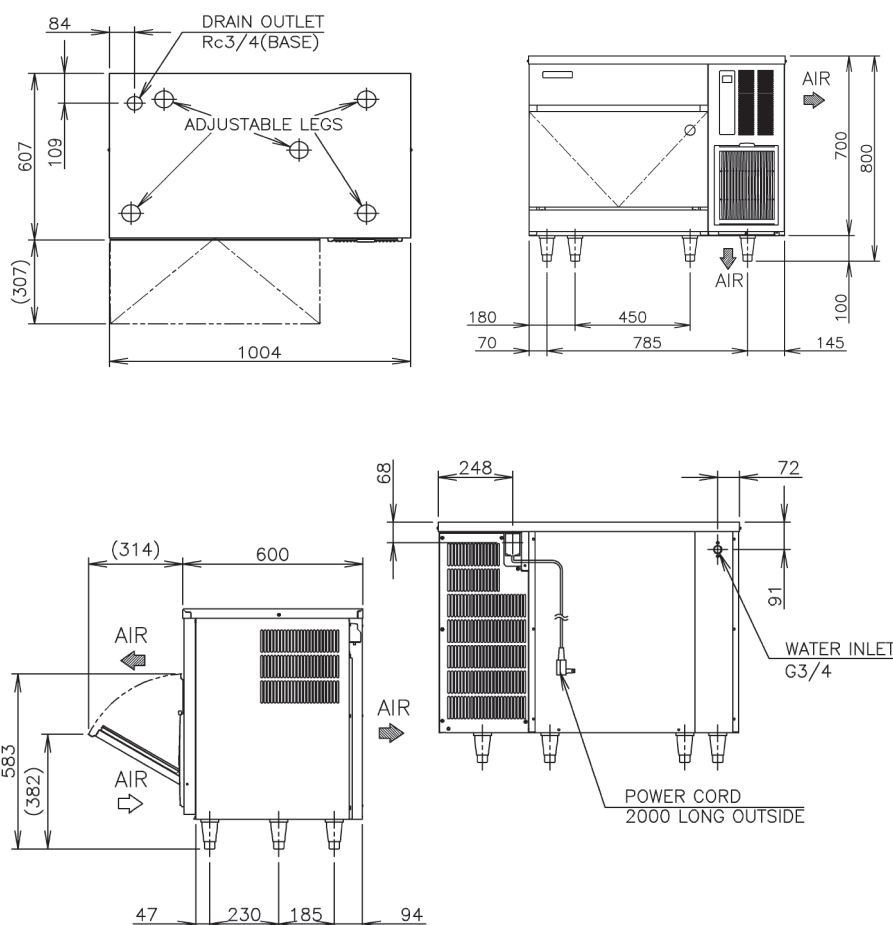
## PRODUCT FEATURES

- New intelligent control circuit dedicated to saving power and water consumption.
- Microcomputer controller controls the ice making process to work at peak performance in any conditions.
- Inbuilt safety features - freeze cycle back up timer, defrost back up, low voltage & high amp protector.
- New 7 segment operational display panel for ease of use.
- Unique closed cell water circuit for ultimate contamination protection.
- Durable stainless steel exterior.
- Easily accessible and cleanable air filters reduce costly callouts.
- Exceptionally hard crystal clear cubes that melt slowly.
- Auto rinse and flush cycle.
- 3-year parts & labour warranty on entire unit, 5 years (parts only) on compressor & air-cooled condenser coil.

CUBE SIZE:



## TECHNICAL DRAWING



## PRODUCT SPECIFICATION

|  |  |
|--|--|
| <b>Production Capacity per 24hours</b> | Approx. 90kg @10°C Air temp; 10°C Water<br>Approx. 85kg @21°C Air temp; 15°C Water<br>Approx. 62kg @32°C Air temp; 21°C Water            |
| <b>Max Storage Capacity</b>            | Approx. 38kg (Bin Control Setting Approx. 23kg)  |
| <b>Freeze Cycle Time</b>               | Approx. 17 Min   |
| <b>Ice Production Per cycle</b>        | Approx. 1.15kg/190pcs  |
| <b>Dimensions</b>                      | 1004mm (W) x 600mm (D) x 800mm (H)<br>(Units include adjustable legs 90-125mm)   |
| <b>Cooling</b>                         | Air  |
| <b>Weight Net/Gross (kg)</b>           | 77 / 88  |
| <b>AC Supply Voltage</b>               | 1 PHASE 220-240V 50Hz / 10AMP Plug   |
| <b>Amperage</b>                        | Running: 4.1A Rated: 4.1A Starting: 19A R134a /  |
| <b>Refrigerant Charge</b>              | 280g   |
| <b>Operating Conditions</b>            | Ambient Temp.: 1-40°C<br>Water Supply Temp.: 5-35°C<br>Water Supply Pressure: 0.07-0.8MPa (0.7-8bar)<br>Voltage Range: Rated Voltage ±6% |