

LSDBM

LINEAR SERIES - BAIN MARIE D-SERIES

Distributor:



Chefs Hat Australia Pty. Ltd
131 Cecil St
South Melbourne, VIC 3205

p: +61 3 9682 1441
e: sales@chefshat.com.au

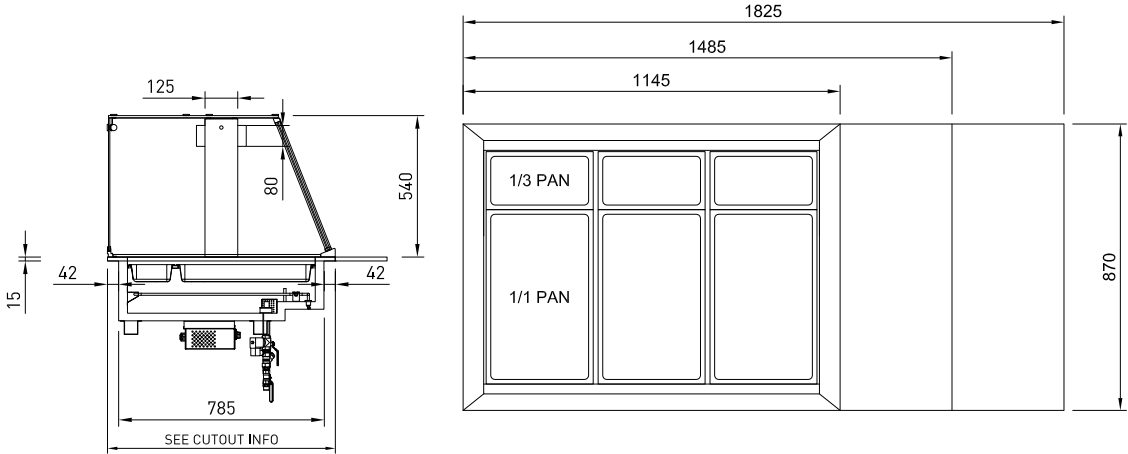
COSSIGA



BM LSDBM3
LSDBM4
LSDBM5

- Dual purpose used wet or dry
- Auto Fill - Dry elements
- Overhead halogen lights
- with adjustable dimmer
- Pans 65mm deep
- Full square glass canopy
- 200mm rear service shelf (fitting optional)

NOTE: The element is above water level when water is filled.
ie. element is never submerged



CABINET DIMENSIONS & SPECIFICATIONS

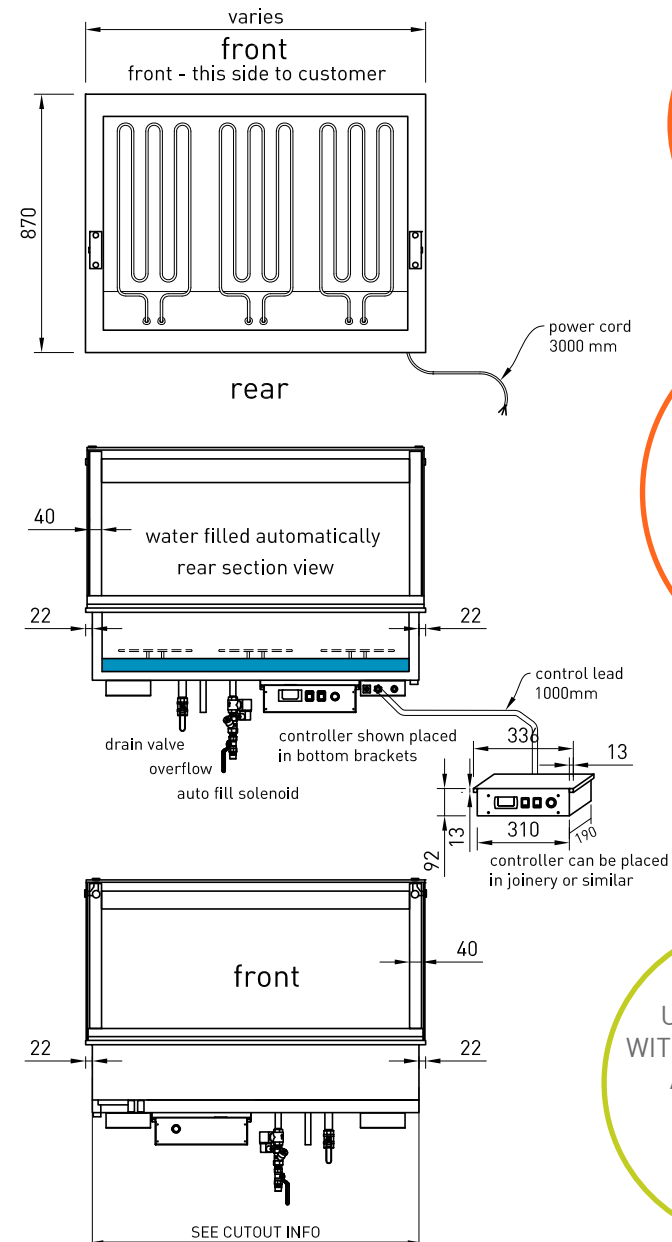
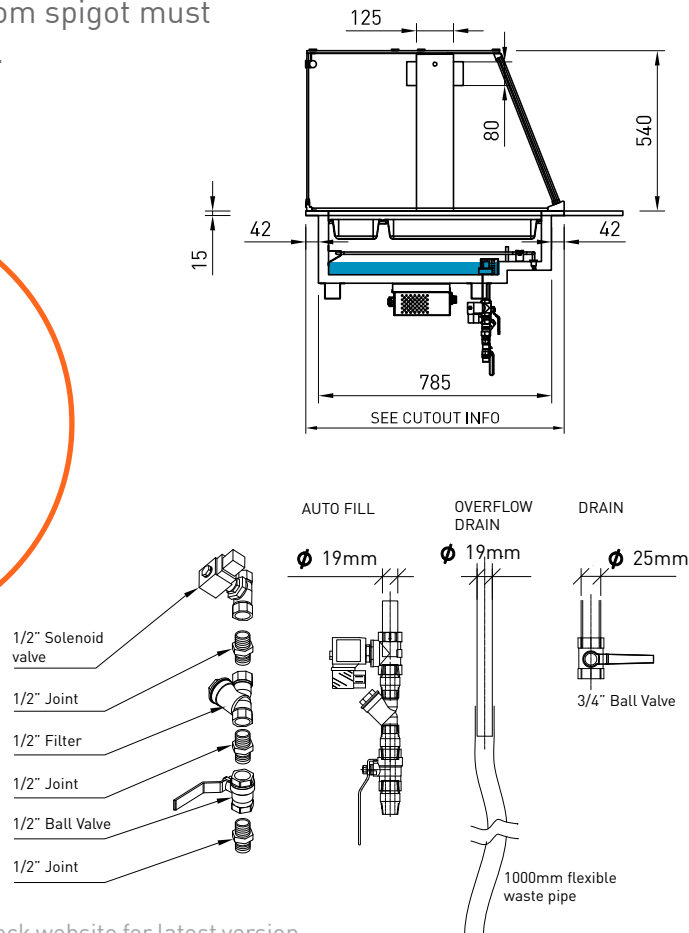
MODEL	CABINET					PANS	WATER FILL	TEMP	DISPLAY AREA	POWER		CONNECTION ELECTRICAL POWER CORD 3000MM	VOLTAGE	PACKED FOR SHIPPING			
	LENGTH [MM]	DEPTH [MM]	HEIGHT [MM]	WEIGHT [KG]	CUT OUTS	65mm Gastro Pans	LITERS	DEG C	M2	KW 230V WITH LAMP	AMPS WITH LAMP	NZ/AUS/UK		LENGTH [MM]	DEPTH [MM]	HEIGHT [MM]	WEIGHT [KG]
LSDBM3	1145	870	555	101	1120X815	3 x 1/1 3 x 1/3	80	55-65	0.76	3.58	15.6	20 AMP LEAD ONLY	220~240V	1250	950	670	139
LSDBM4	1485	870	555	121	1460X815	4 x 1/1 4 x 1/3	106	55-65	1.02	4.78	20.8	30 AMP LEAD ONLY	220~240V	1590	950	670	166
LSDBM5	1825	870	555	147	1800X815	5 x 1/1 5 x 1/3	132	55-65	1.31	6.09	26.5	30 AMP LEAD ONLY	220~240V	1930	950	670	199

Electrical power cord 3000mm
1 phase connection required.
Unit must be hard wired on site
to isolation switch.

Screw on stop cock valve drain pipe
Ideally drain connected to waste.
Overflow flexible waste pipe 19mm
dia.1000 mm length from spigot must
be connected to waste.

Overhead
300 Watt
halogen lights.
dimmer controled
100w, 200w, 300w
settings

NOTE: The element is above water level when water is filled. ie. element is never submerged. Offers high humidity with minimum steam build up.



Dual purpose
used **wet or dry**

Ensure sufficient water in well to activate the float switch or heating elements will not activate

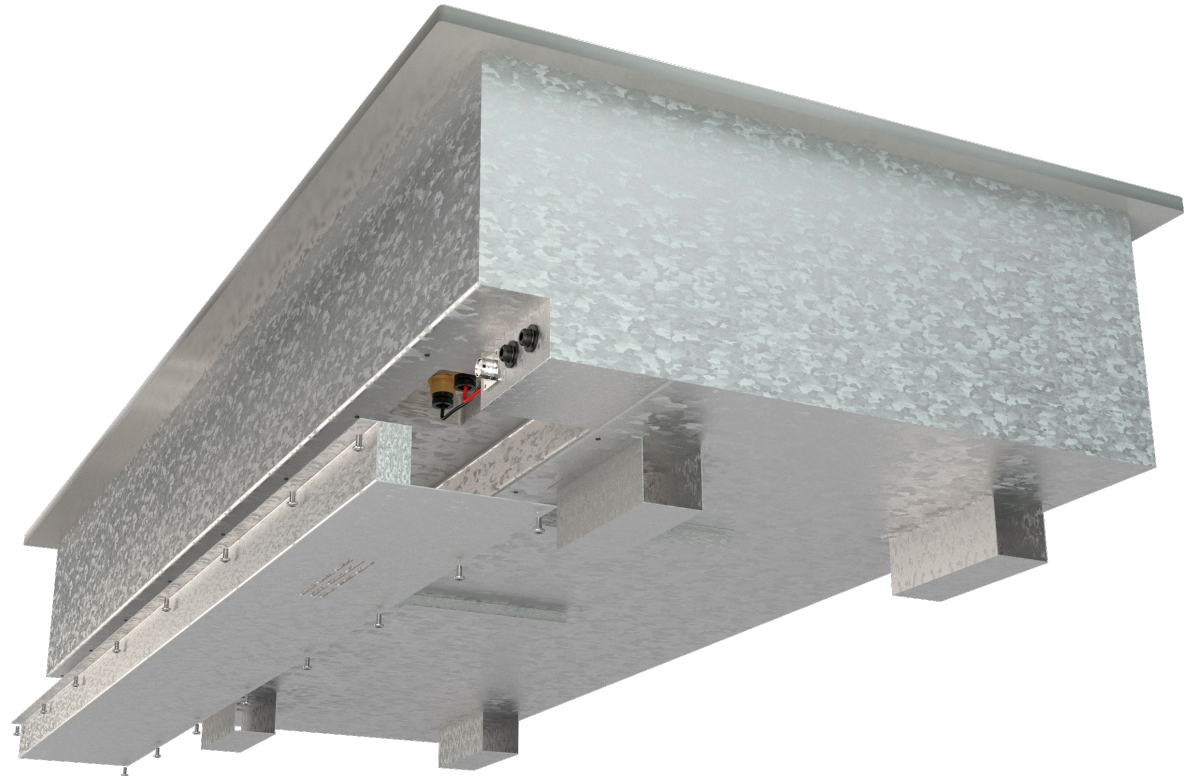
UNITS SUPPLIED
WITH 1/1 and 1/3 PANS
AT 65MM DEEP,
MAX PAN DEPTH
IS 100mm.

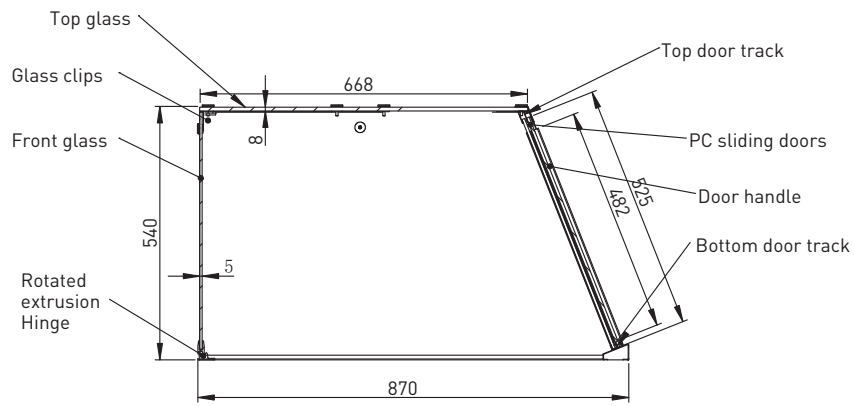
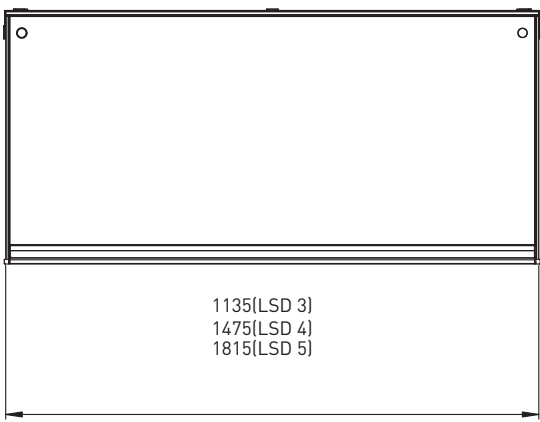
ELEMENT REPLACEMENT ACCESS

When installing ensure there is enough **free area** in joinery to remove the access panel for future maintenance

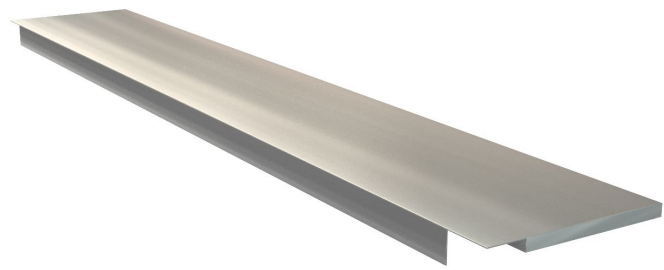
Access to element

- When replacing the elements, access to the fixings are through the removable rear panel. Undo the screws to remove.





GLFSD Full Square Glass



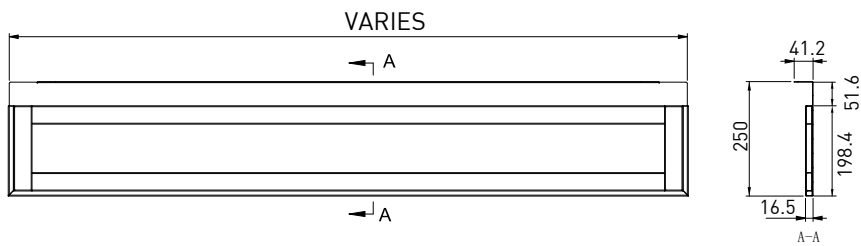
Rear Service Shelf

Rear service shelf supplied for optional installation

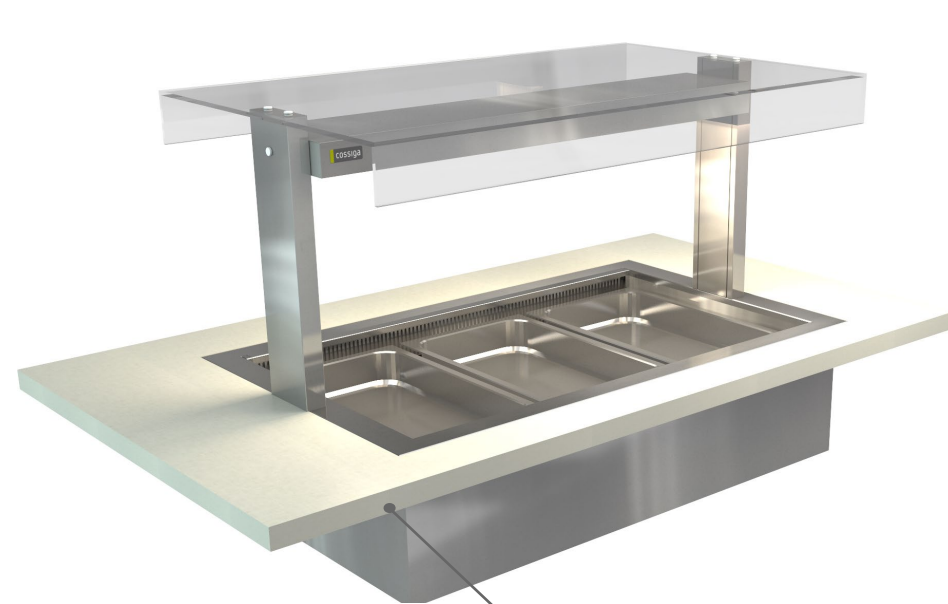


SHELF DIMENSIONS & SPECIFICATIONS

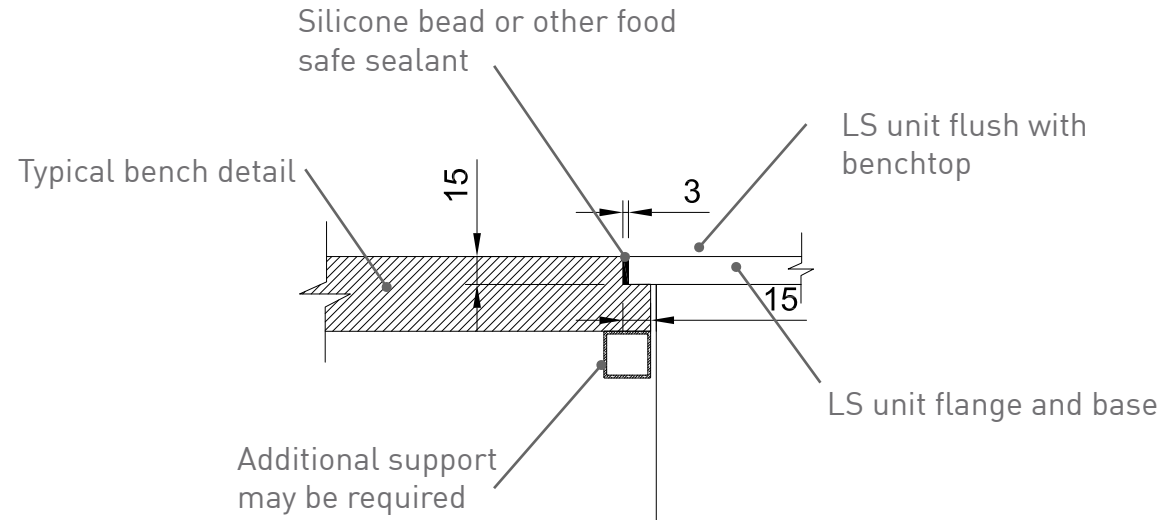
MODEL	CODE	TOTAL SHELF LENGTH	SHELF DEPTH
LS-2	X000612	800 MM	250 MM
LS-3	X000613	1140 MM	250 MM
LS-4	X000606	1480 MM	250 MM



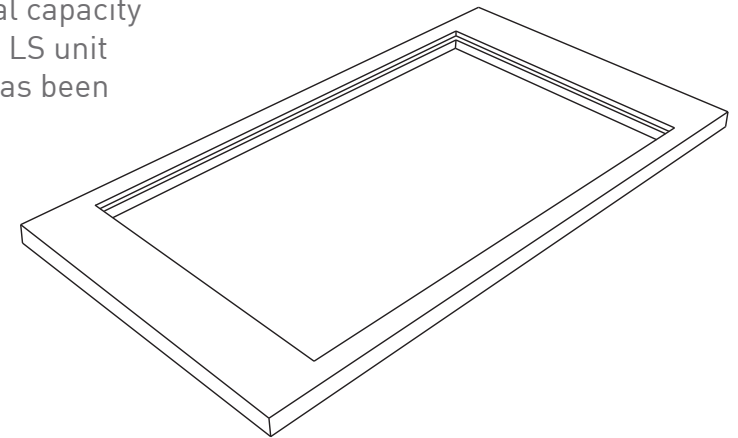
FLUSH BENCH TOP DETAIL



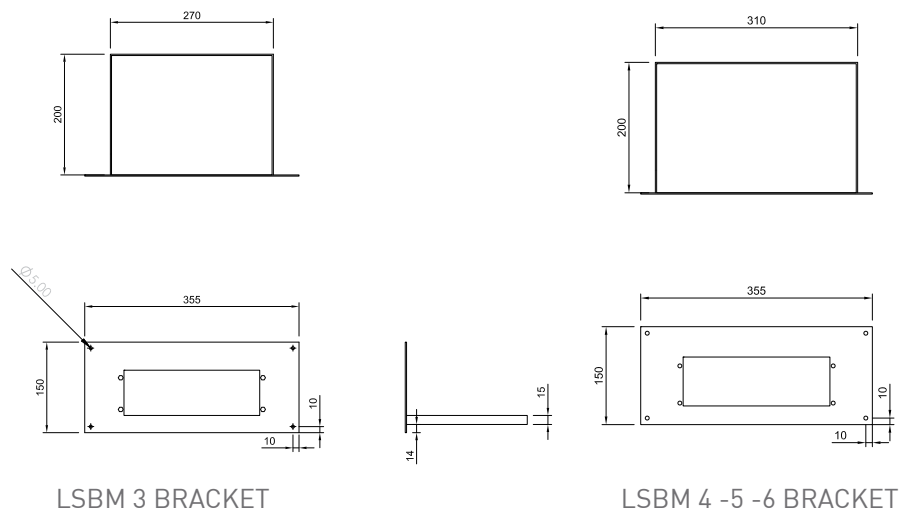
Additional support may be required under bench ie. stainless steel hollow section to frame



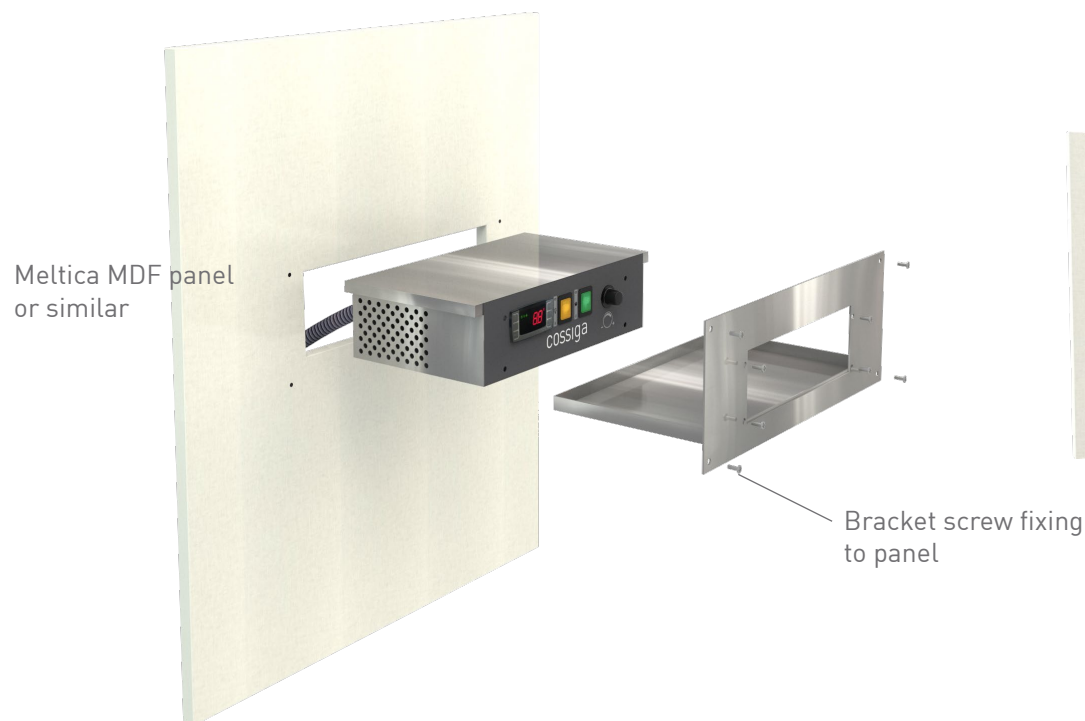
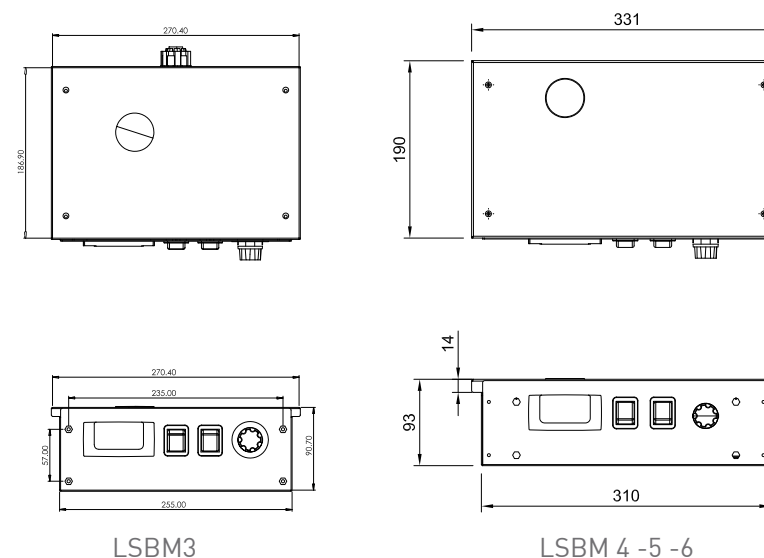
Counter top joinery must be of sufficient structural capacity to take the weight of the LS unit when the flange detail has been made.

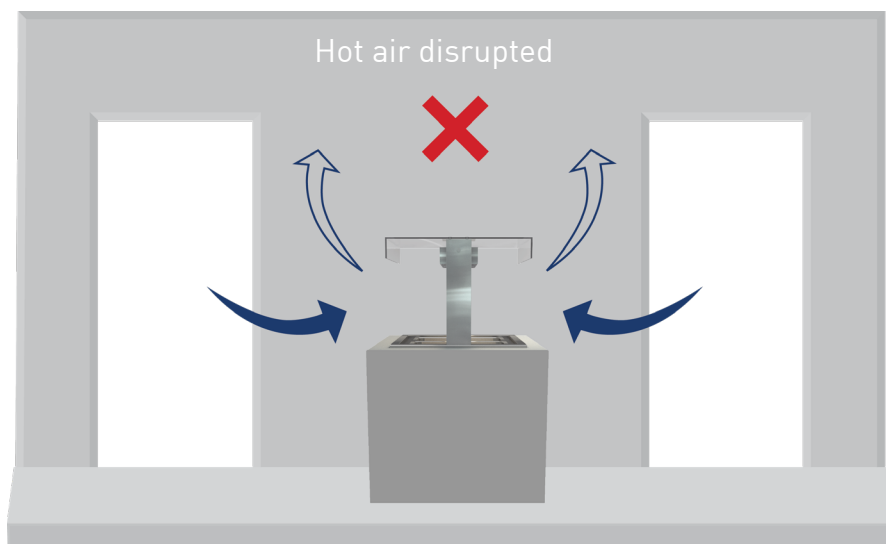


LSBM CONTROLLER BRACKET SIZES



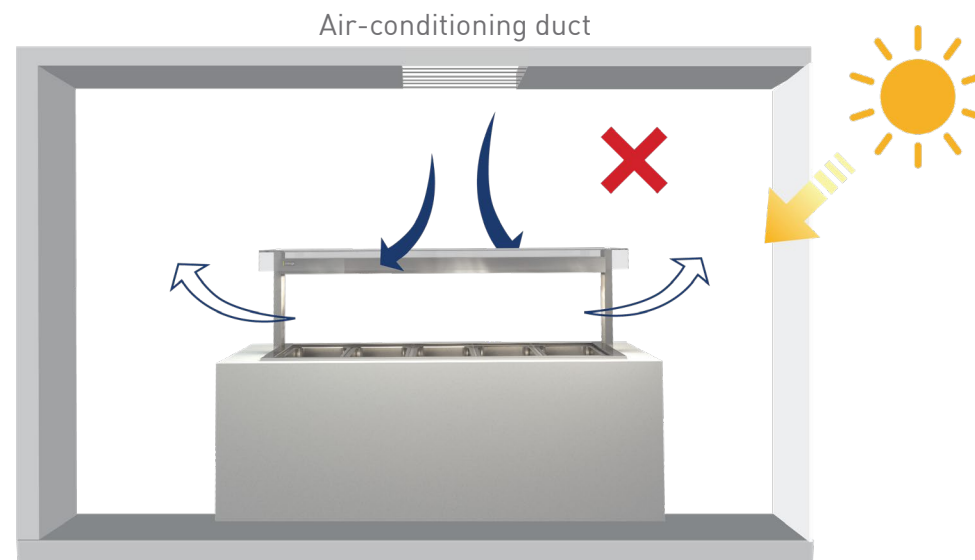
LSBM CONTROLLER SIZES





Locations to avoid

- Drafts from doorways
- Airflow from air-conditioning ducts
- Hot air from motors i.e. refrigerators
- Direct sunlight



Disrupted air flow

Heat from other equipment and natural conditions, such as direct sunlight straight on units, can cause cooling to fail and overload compressor

Mechanical air flows, such as diffusers and fans can disturb the air curtain on units causing failure