

24 Port 19" Cat6A STP Patch Panel, Complete with 24 x Cat6A Keystone Jacks

PP24C6A-STP

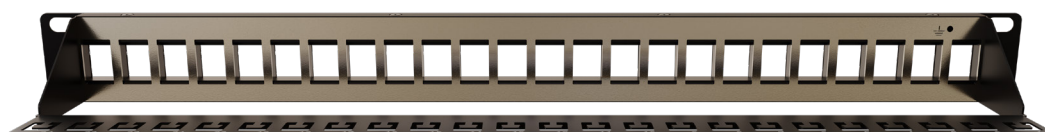


DESCRIPTION

The CERTECH patch panel is designed and manufactured for Australian standards and conditions. The 1RU, 19 inch (482.6mm) wide format is compatible with the industry standard 19 inch wide server racks/data cabinets. It is constructed of cold rolled steel for superior strength and durability, includes an integrated cable management bar at the rear, 4 cage nuts for mounting and an earth link cable and lug for earth connection. The black colour is to aesthetically match the CERTECH (and industry standard) data cabinet ranges. The 24 Keystone apertures house the included jacks and the flat labelling areas are designed for either manual, printed or traffolyte labels.

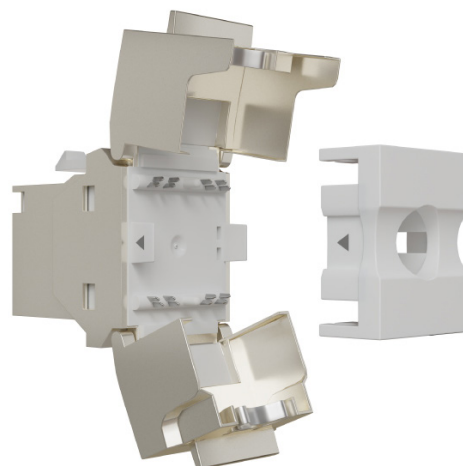
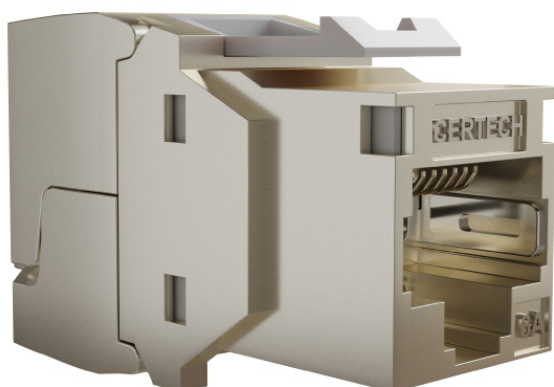
FEATURES

- Constructed with cold rolled steel (patch panel and cable management bar)
- The front of the panel is a flat, one piece design for ease of labelling
- Suitable for CERTECH Keystone jacks (JKC6ASTP)
- Equipped with an earthing wire and lug
- For ease of installation, the keystone jacks can be terminated to the cable and then snapped into each individual port on the patch panel.
- Dimensions (including rear support bar): 482 (W) x 44 (H) x 94 (D)
- ROHS and REACH Compliant
- Coating: Black Powder Coated



Cat6A STP Keystone Jack (6/24pk)

JKC6ASTP-24



DESCRIPTION

The CERTECH Cat 6A shielded RJ45 keystone jacks feature a tool-less style termination to reduce termination time, fully enclosed IDCs for optimum performance and reliability, and dual earth connection points to ensure a robust, reliable connection. When combined with a CERTECH Cat 6A shielded cable and installed by a CERTECH certified installer, the permanent links exceed the performance criteria outlined in AS 11801 (1-6) and can be certified for a 25 year warranty under the CERTECH 25 year warranty program.

FEATURES

- UL safety listed
- DELTA and ETL verified Cat6A component rated performance
- 180° cable exit
- Tool-less termination
- RoHS and REACH compliant
- Fully enclosed IDCs

STANDARDS

- AS/CA S008 (Australian)
- AS 11801 (1-6) (Australian)
- ANSI/TIA-568.2-D (North American)
- IEC 60603-7:2020 (International)
- UL 1863 (International)

APPLICATIONS

- Supports 10G base-T ethernet and backwards compatible to 10/100/1G Base-T ethernet
- Power over HDBaseT (PoHDBaseT - up to 100W)
- Performance conforms to ANSI/TIA568.2-D and AS/CA 11801 (1-6)
- Provides verified, high speed 10GB (Class Ea) channel solution for Local Area Networks

Power over Ethernet (PoE)			
Name	IEEE Standard	Power from PSE	Current/Disconnection under load
PoE	IEEE 802.3af	15.5W	Compliant
PoE+	IEEE 802.3at	30W	Compliant
PoE++	IEEE 802.3bt (Type 3)	60W	Compliant
PoE++	IEEE 802.3bt (Type 4)	100W	Compliant



SPECIFICATION

RJ45 Jack	Housing:	Zinc Die-Casting with Nickel plated
	Contact Bracket:	PC, UL 94-V2, Transparent colour
RJ45 Jack Contact	Material:	Phosphor bronze with nickel plated
	Finish:	50 micro-inch gold plated on plug contact area
IDC	Housing:	PC+Glass Fiber, UL 94-V2
	Terminal:	Phosphor Bronze with tin plated
	Cap for toolfree:	PC+Glass Fiber, white colour, UL 94-V2
	Clip:	Stainless Steel
	Grounding Contact:	Zinc Die-Casting with Nickel plated
	PCB:	FR4, UL 94-VO
Performance	Wiring:	T568A & T568B
	Insertion Force:	30N max. (IEC 60603-7-5)
	Retention Strength:	7.7 kg between plug
	Operating Temperature:	- 10°C to 60°C (ISO/IEC 11801, ANSI/TIA 568C.2)
	IDC:	Suitable for 23-26 AWG solid wire, conductor
	Tool-less:	Using the IDC Cap for wire management
	Transmission:	The Cat.6A (class Ea) performance complies with ANSI/TIA 568 C.2 and AS11801(1-6) standards

