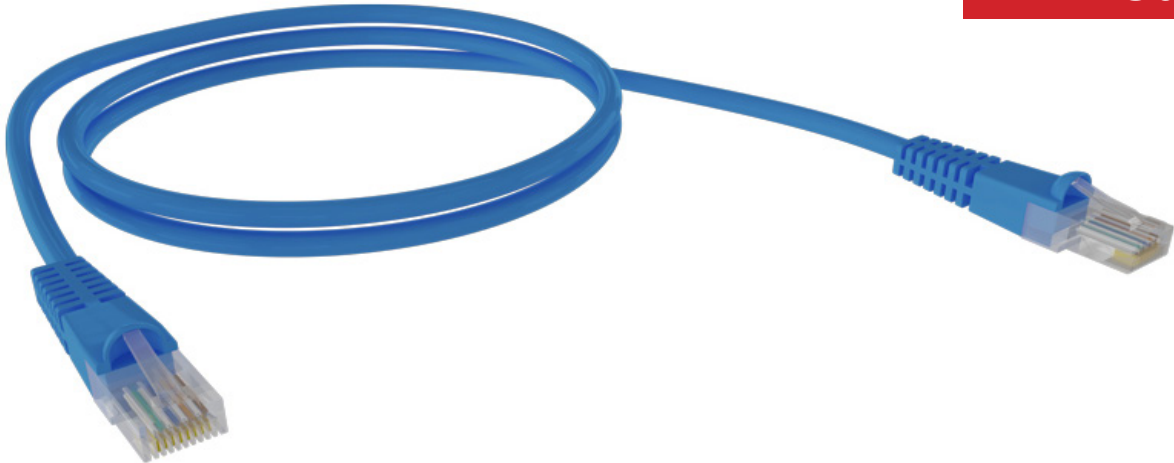


Cat6 UTP Patch Leads - 250MHz

NPLC6XX



DESCRIPTION

The CERTECH Cat6 UTP 24AWG patch leads, rated at 250MHz, are a high-quality networking cable designed to deliver superior performance for your data transmission needs. The cable features a UTP (Unshielded Twisted Pair) construction, built with 24AWG pure copper conductors and a PVC jacket. These patch leads provide exceptional performance and versatility for various networking needs.

STANDARDS

- AS/CA S008:2020
- ISO/IEC 61935-2
- ANSI/TIA-568.2-D
- ISO/IEC 11801-(1-6)
- IEEE 802.3
- EN 50288-3-2
- IEC 60332-1-2
- ISO9001
- ISO14001

Name	IEEE Standard	Power at Port	Current/Disconnection under load
PoE	IEEE 802.3af	15.5	Compliant
PoE+	IEEE 802.3at	30W	Compliant
PoE++	IEEE 802.3bt (Type 3)	60W	Compliant
PoE++	IEEE 802.3bt (Type 4)	100W	Compliant

FEATURES

- Cat6 UTP 24AWG
- 100% tested and channel certified by 3P, UL and ETL.
- Covered by a Lifetime warranty.

Available colours:



SIZES AVAILABLE

0.3m, 0.5m, 1m, 1.5m, 2m, 3m, 5m, 10m, 15m, 20m, 25m, 30m

PRODUCT CODE LEGEND

NPLC6(XX)(XX)

Colour

BL = Blue
GN = Green

Length

0.3 = 0.3m
10 = 10m

I.E

NPLC6BL0.5
NPLC6GN10

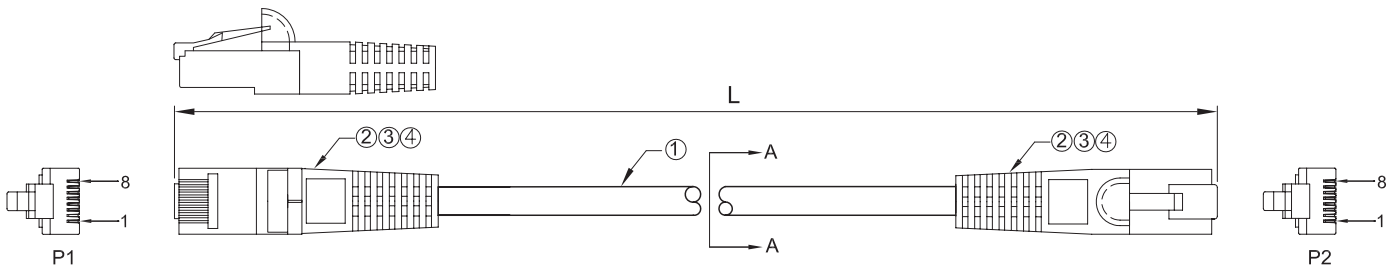
Colour		All Lengths (Metres)	Length*	Available Colour
BL = Blue	PP = Purple	0.3, 0.5,	0.3 - 10m	All colours
PK = Pink	RD = Red	1, 1.5,	15 - 20m	Blue & Black
BK = Black	WH = White	2, 3, 5,	25 - 30m	Blue only
GY = Grey	YL = Yellow	10,		
OR = Orange	GN = Green			
BG = Beige				



DESIGNED AND MANUFACTURED TO AUSTRALIAN STANDARDS AND CONDITIONS

PRODUCT SPECIFICATIONS

Conductor Gauge	24AWG
Conductor Type	Stranded
Performance Level	Channel Compliant
Cable Construction	U/UTP
Jacket Material	PVC
Plug Type	RJ45 8P8C
Plug Housing Material	PVC
Connector End A	RJ45 Modular Plug
Connector End B	RJ45 Modular Plug
Nominal Cable Outer Diameter	5.6mm +/- 0.3mm
Wiring Scheme	T568A
Maximum Storage Temperature	60°C
Maximum Operating Temperature	60°C
Minimum Operating Temperature	-20°C
Flammability Rating	IEC60332-1-2
PoE Compatibility	PoE++ Type 3, rated to 100 Watts



VG BC STR]X4P				PINOUT		
L (mm)	T (mm)	L (mm)	T (mm)	P1(T568A)	P2(T568A)	WIRE
300	±20	5000	±50	1	1	WHITE/GREEN
				2	2	GREEN
500	±20	7500	±75	3	3	WHITE/ORANGE
750	±20	10000	±100	6	6	ORANGE
1000	±30	15000	±150	4	4	BLUE
1500	±30	20000	±200	5	5	WHITE/BLUE
2000	±30	25000	±250	7	7	WHITE/BROWN
3000	±30	30000	±300	8	8	BROWN

