

## CERTECH Cat6A STP 10G Patch Lead

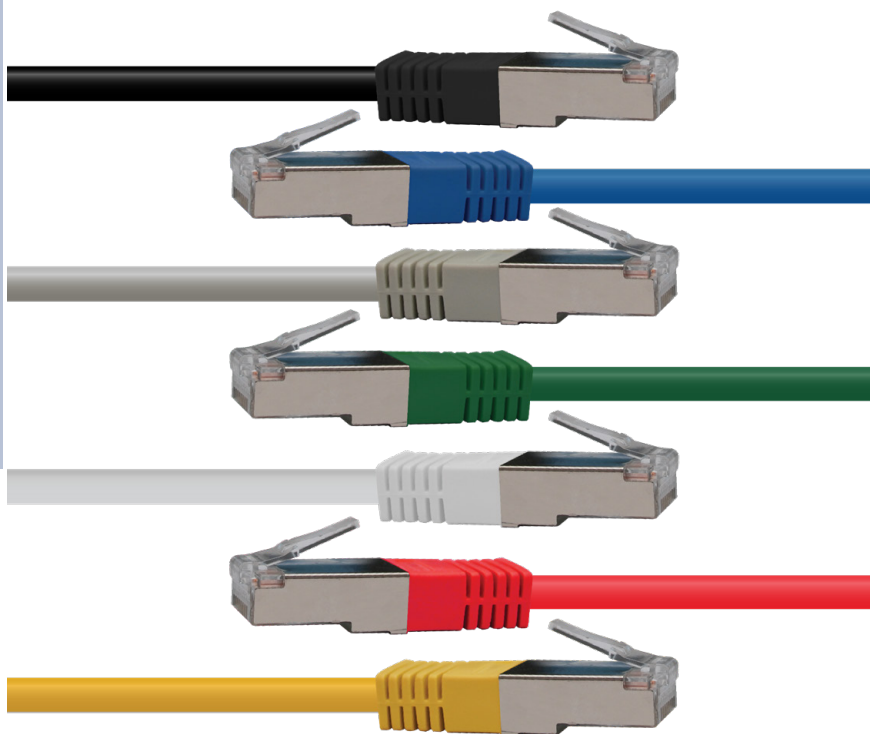
**NPLC6ASHXXX**

### FEATURES:

CERTECH Cat6A shielded 10G patch leads conform to the ANSI/ TIA/EIA-568-B.2-10 specification. Patch leads are wired to the T568A pinout specification. Available in various colours and lengths.

#### FEATURES:

- Produced by an ISO9001 and ISO14001 certified manufacturer
- 26AWG
- 100% tested and certified
- Available in 7 colours
- Covered by lifetime warranty



LENGTH	COLOUR						
	BLACK	BLUE	GREEN	GREY	RED	WHITE	YELLOW
0.3M	NPLC6ASHBK0.3	NPLC6ASHBL0.3	NPLC6ASHGN0.3	NPLC6ASHGY0.3	NPLC6ASHRD0.3	NPLC6ASHBWH0.3	NPLC6ASHYL0.3
0.5M	NPLC6ASHBK0.5	NPLC6ASHBL0.5	NPLC6ASHGN0.5	NPLC6ASHGY0.5	NPLC6ASHRD0.5	NPLC6ASHWH0.5	NPLC6ASHYL0.5
0.75M	NPLC6ASHBK0.75	NPLC6ASHBL0.75	NPLC6ASHGN0.75	NPLC6ASHGY0.75	NPLC6ASHRD0.75	NPLC6ASHWH0.75	NPLC6ASHYL0.75
1M	NPLC6ASHBK1	NPLC6ASHBL1	NPLC6ASHGN1	NPLC6ASHGY1	NPLC6ASHRD1	NPLC6ASHWH1	NPLC6ASHYL1
1.5M	NPLC6ASHBK1.5	NPLC6ASHBL1.5	NPLC6ASHGN1.5	NPLC6ASHGY1.5	NPLC6ASHRD1.5	NPLC6ASHWH1.5	NPLC6ASHYL1.5
2M	NPLC6ASHBK2	NPLC6ASHBL2	NPLC6ASHGN2	NPLC6ASHGY2	NPLC6ASHRD2	NPLC6ASHWH2	NPLC6ASHYL2
3M	NPLC6ASHBK3	NPLC6ASHBL3	NPLC6ASHGN3	NPLC6ASHGY3	NPLC6ASHRD3	NPLC6ASHWH3	NPLC6ASHYL3
5M	NPLC6ASHBK5	NPLC6ASHBL5	NPLC6ASHGN5	NPLC6ASHGY5	NPLC6ASHRD5	NPLC6ASHWH5	NPLC6ASHYL5
7.5M	NPLC6ASHBK7.5	NPLC6ASHBL7.5	NPLC6ASHGN7.5	NPLC6ASHGY7.5	NPLC6ASHRD7.5	NPLC6ASHWH7.5	NPLC6ASHYL7.5
10M	NPLC6ASHBK10	NPLC6ASHBL10	NPLC6ASHGN10	NPLC6ASHGY10	NPLC6ASHRD10	NPLC6ASHWH10	NPLC6ASHYL10
15M	NPLC6ASHBK15	NPLC6ASHBL15		NPLC6ASHGY15	NPLC6ASHRD15		
20M	NPLC6ASHBK20	NPLC6ASHBL20		NPLC6ASHGY20	NPLC6ASHRD20		