

## Cat6A RJ45 Shielded (STP) Slimline Tool-less Keystone Jack, w/ Dust-Prevention Shutter

**JKC6ASHTL-DPS**

### FEATURES:

Material:

RJ45 Jack

1-1. Housing: Zinc die-casting with nickel plated.

1-2. Contact Bracket: PC, UL 94-V2, transparent colour

RJ45 Jack Contact

2-1 Material: Phosphor bronze with nickel plated.

2-2 Finish: 50 micro-inch gold plated on plug contact area

Cap A&B: Zinc die-casting with nickel plated.

IDC

4-1 Housing: PC, grey colour(RAL7035), UL 94-V2.

4-2 Terminal: Phosphor bronze with tin plated.

Cap: PC, white colour, UL 94-V2

Clip: Stainless steel.

Shutter: ABS+PC, UL 94-VO, white colour.

PCB: FR4, UL 94-VO.

Performance:

a. T568A & T568B wiring.

b. Insertion Force: 30N max. (IEC 60603-7-5).

c. Retention Strength: 7.7kg between jack and plug.

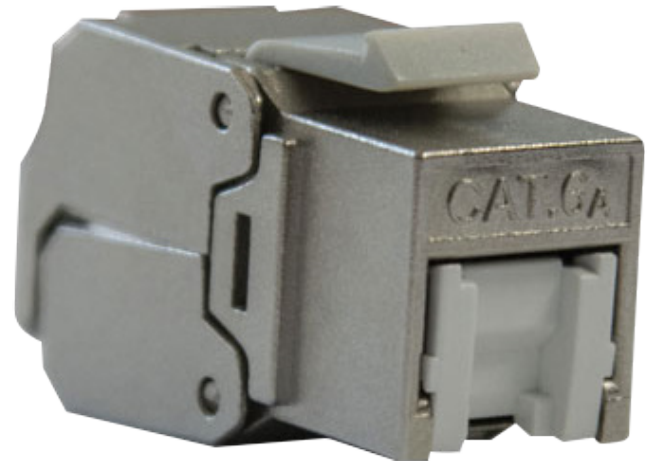
d. Operating Temperature: -10C to 60C. (ISO/IEC 11801, ANSI/TIA 568 C.2).

e. Life(mating cycles):

e-1. Jack: 750 cycles min. (ISO/IEC 11801, IEC 60603-7-5).

e-2. IDC: Suitable for 23-26 AWG stranded and solid wire.

f. The Cat6A transmission performance is in compliance with the ANSI/TIA 568 C.2 standard.



MODEL	DESCRIPTION	TYPE
JKC6ASHTL-DPS	Cat6A RJ45 Shielded (STP) Slimline Tool-less Keystone Jack, w/ Dust-Prevention Shutter	Cat6A

## JKC6ASHTL-DPS

