

CERTECH 19" 1RU Fibre Sliding Tray

FIBSTRAY

FEATURES:

The FIBSTRAY sliding patch panel accepts 3 x adaptor plates.

A modular panel for multi-application with MTP/ MPO system, pre-terminated cables or conventional splicing.

Easy front access

The panel is supplied unloaded and the modules and plates are supplied separately.

Includes:

- 1 x 24 Position Splice Cassette
- 2 x Cable Routing Spools
- 2 x 25mm Nylon Cable Glands

Specifications:

- Height: 1RU (43.65mm)
- Width: 19" (482.60mm)
- Depth: 10" (255.00mm)
- Shelf Mounting Adjustment Range: 0.00~245.00mm
- Material: SPCC, 1.2mm Thickness, Black (RAL9005)
- Operating Temperature: -20 to +70 Degree Celcius
- Net Weight: 3.3kgs



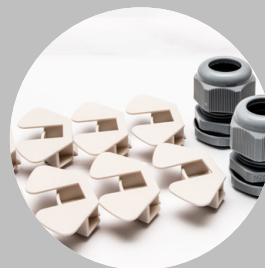
Accessories available



24 position
splice cassettes



Rear cable gland entry
points

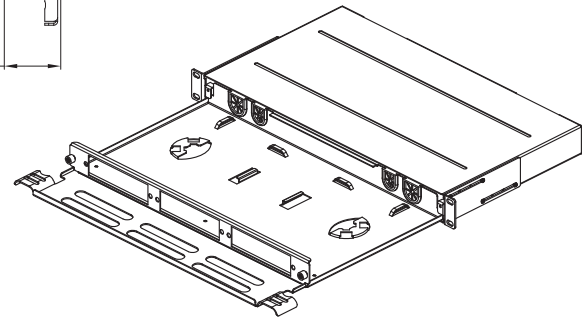
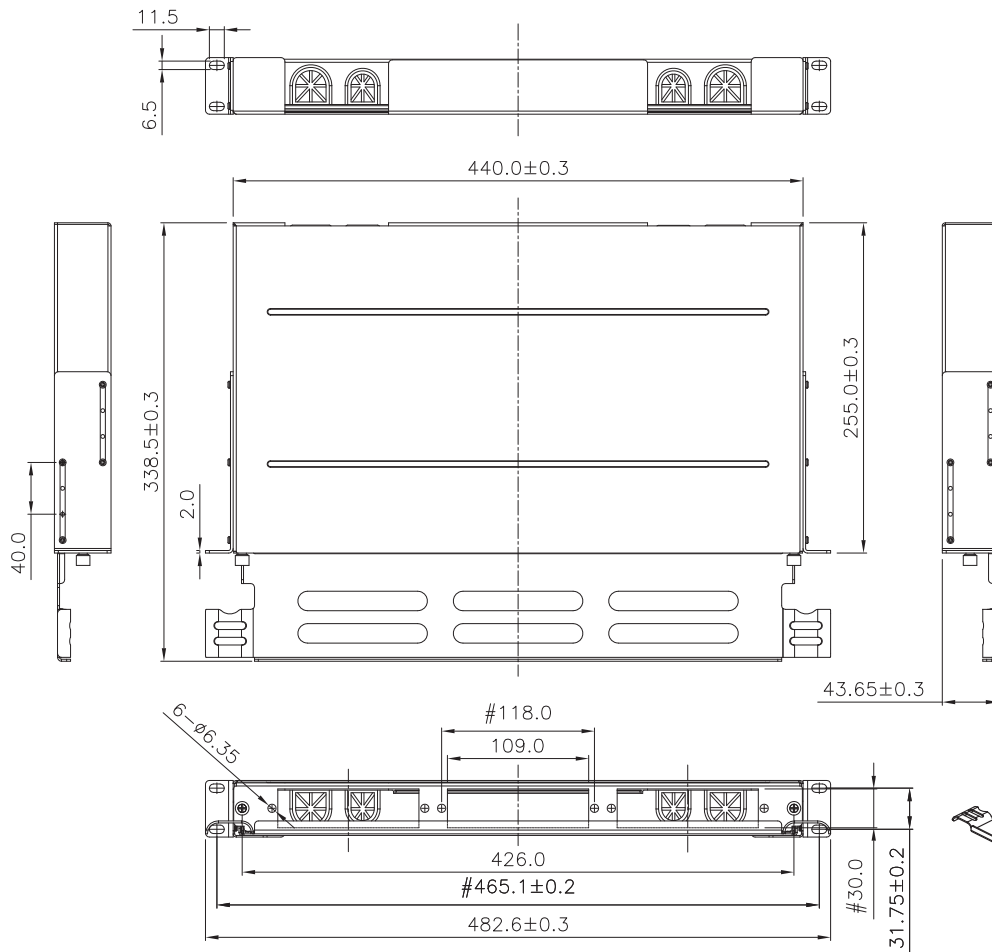


Supplied with internal
cable management

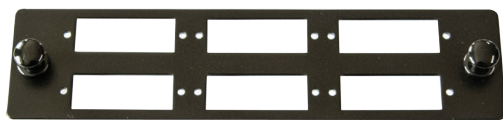


Telescopic Rackmount
Brackets

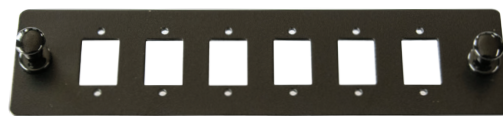
MODEL	DESCRIPTION	SIZE
FIBSTRAY	CERTECH 19" 1RU Fibre Sliding Tray	1RU



COMPANION PRODUCTS FOR USE WITH THE FIBSTRAY 3 SLOT FIBRE TRAY



FIBSTRAYSCD6
CERTECH SC Duplex 6 Port Plate for FIBSTRAY



FIBSTRAYLCD6
CERTECH LC Duplex 6 Port Plate for FIBSTRAY



FIBSTRAYBP
CERTECH Blanking Plate for FIBSTRAY

FIBRE JOINERS



AFIBLCD
CERTECH LC-LC OM3/OM4 Duplex Fibre Adaptor



AFIBLCOS2D
CERTECH LC-LC OS2 Duplex Fibre Adaptor



AFIBSCS
CERTECH SC-SC OM3/OM4 Simplex Fibre Adaptor



AFIBSCOS2S
CERTECH SC-SC OS2 Simplex Fibre Adaptor



AFIBSCOS2D
CERTECH SC-SC OS2 Duplex Fibre Adaptor



AFIBSCD
CERTECH SC-SC OM3/OM4 Duplex Fibre Adaptor



AFIBLCOS2Q
CERTECH LC-LC OS2 Quad Fibre Adaptor



AFIBLCQ
CERTECH LC-LC OM3/OM4 Quad Fibre Adaptor

THE CERTECH 3 PORT SLIDING FIBRE TRAY IS SOLD UNLOADED, READY FOR INSTALLATION OF THE PLATES & FIBRE ADAPTORS BEST SUITED TO YOUR REQUIREMENTS