

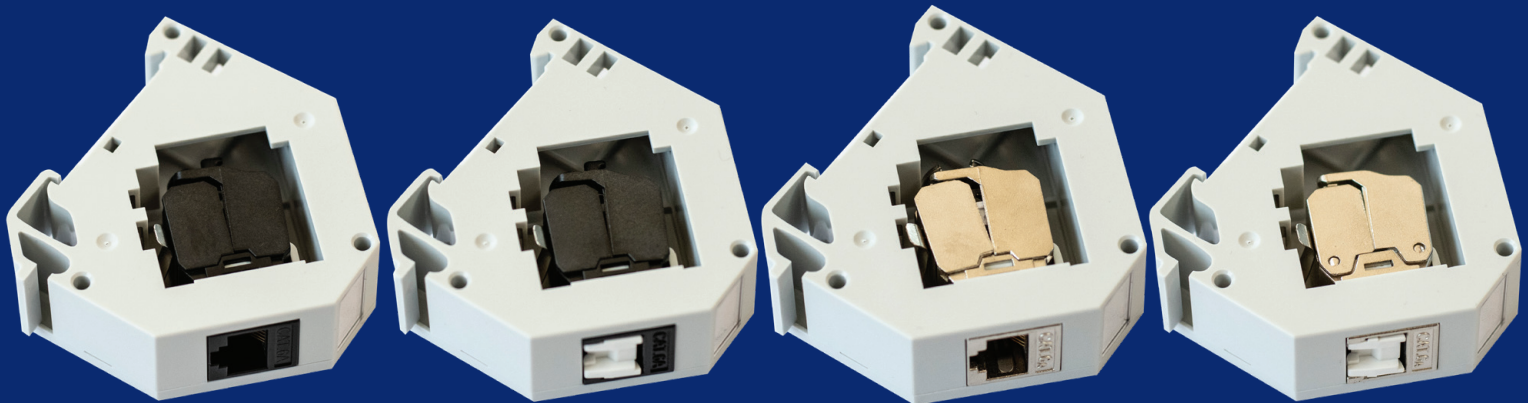
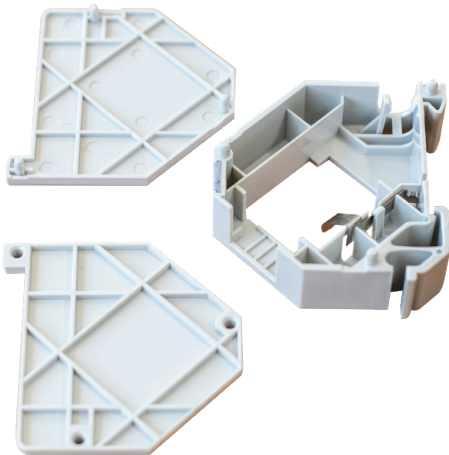
DIN MOUNT RJ45 SOCKETS

DINC6/XXX

DESCRIPTION

CERTECH Din Mount RJ45 Sockets are available in Cat6A Shielded and UTP with both shuttered and non shuttered options. The Din Mount Rail Kit (**DINC6**) comes including Jack. Ready to go with inbuilt earthing points and din mount quick connect for ease of installation and use.

CERTECH also supplies 19" Din Mount Rails (**NRADIN**) from 1RU to 4RU in 100 and 200mm depths.

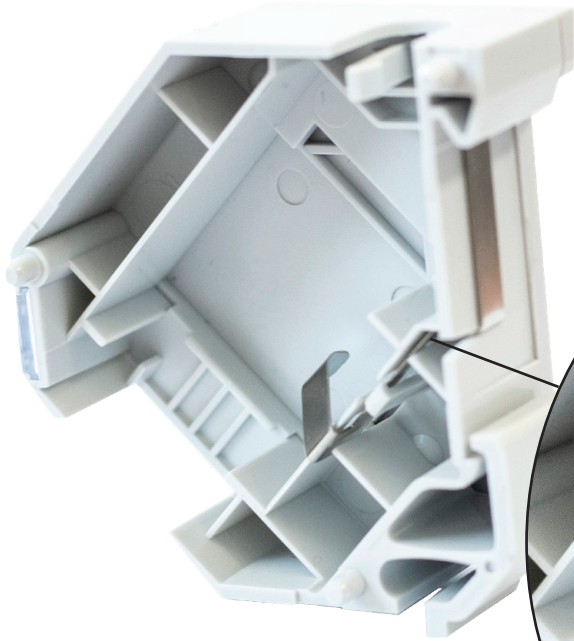


DINC6A
Cat6A UTP Din Mount RJ45 Socket

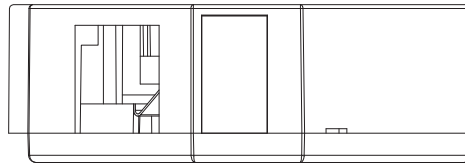
DINC6A-DPS
Cat6A UTP w/dust shutter Din Mount RJ45 Socket

DINC6ASH
Cat6A Shielded Din Mount RJ45 Socket

DINC6ASH-DPS
Cat6A Shielded w/dust shutter Din Mount RJ45 Socket



Inbuilt Earthing Points



Dim.-1

