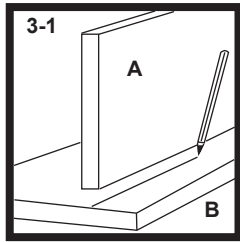


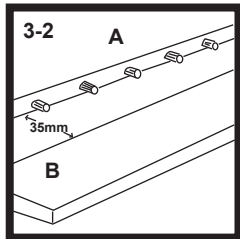


## TO MAKE T BUTT JOINTS

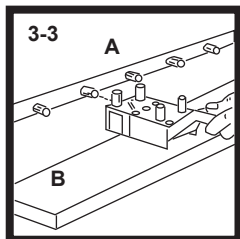


### MORE THAN 25mm FROM THE EDGE

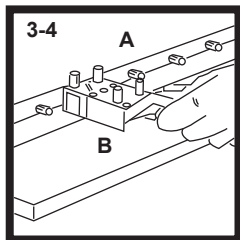
Follow the steps as in previous T Butt Joint instructions to position edge dowels.



Place Board A on Board B, with the edge of Board A approx. 35mm from the marked line where holes are to be drilled.



With the Jig face up, slide the slot over the matching size dowel.

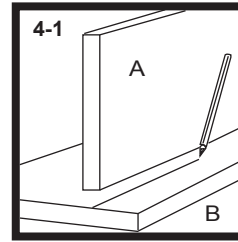


Match the marks on both sides of the jig with the line previously marked on Board B, ensuring the Jig is flush with the edge of Board A.

If not flush, slide board A until it is correctly positioned.

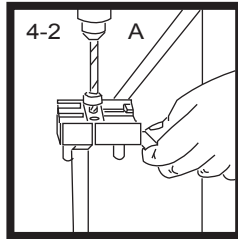
Now clamp the boards to the work bench. Ensure Depth Stop is correctly positioned. and drill all holes, moving along all dowels.

Place glue on Dowels and complete the joins.

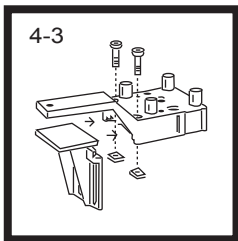


### 25mm OR LESS FROM THE EDGE

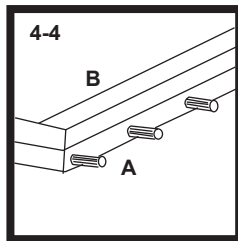
Position the boards as they will be finally positioned and mark as A and B. Then rule a line on board B, which is the centre point of the dowels.



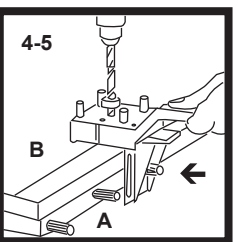
Now clamp Board A vertically and proceed with edge dowelling as detailed in figure 3, complete this step by placing dowels in their holes without gluing. This will provide a guide for drilling holes in Board B.



Now attach the Angle plate as detailed in Fig. 1-4



Place Board B on Board A as shown in Fig. 1-6



Line up the markers on the side of the Jig, so that they match up with the line previously marked on board.

Slide in the Angle Bracket over the dowel using the appropriate matching slot.

When Angle Plate is flush with Board B, tighten the 2 clamping screws.

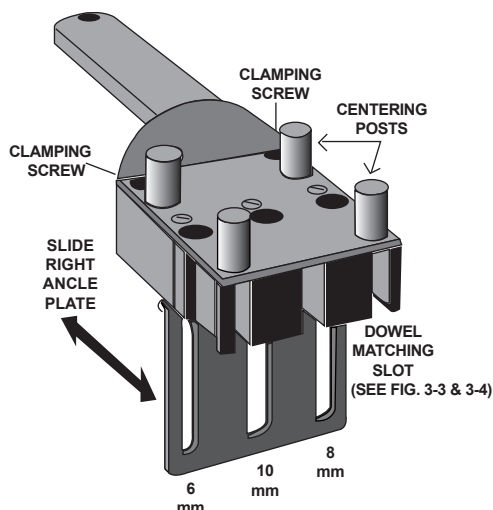
Clamp Boards A & B together. After ensuring a Depth Stop is correctly fitting to the Drill Bit, drill through the appropriate holes in the face of the Jig.

Place glue on dowels and complete the joints.



NO. H4500

**DOWELLING & JOINTING JIG**  
**AS ALSO CONTAINED IN H7200 KIT**



### DOWEL MARKING CENTRE POINTS

For those projects which are more difficult or do not require a Jig, Centre Points provide a quick and easy method of marking or matching where to drill.

Available in Packs of 4.

Part No. H5418 6mm

Part No. H5420 8mm

Part No. H5422 10mm

