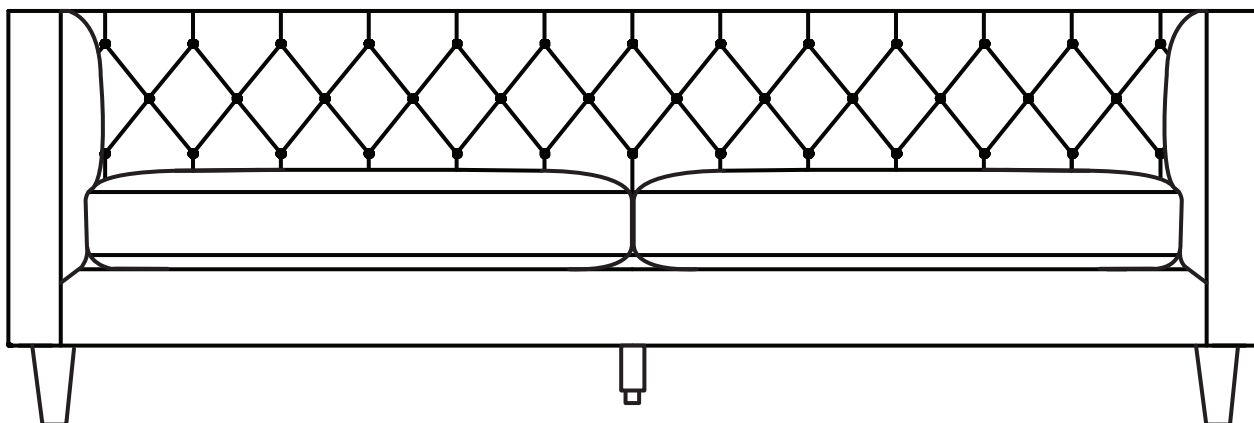
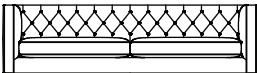
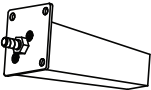





# Assembly Instructions

## TUXEDO SOFA

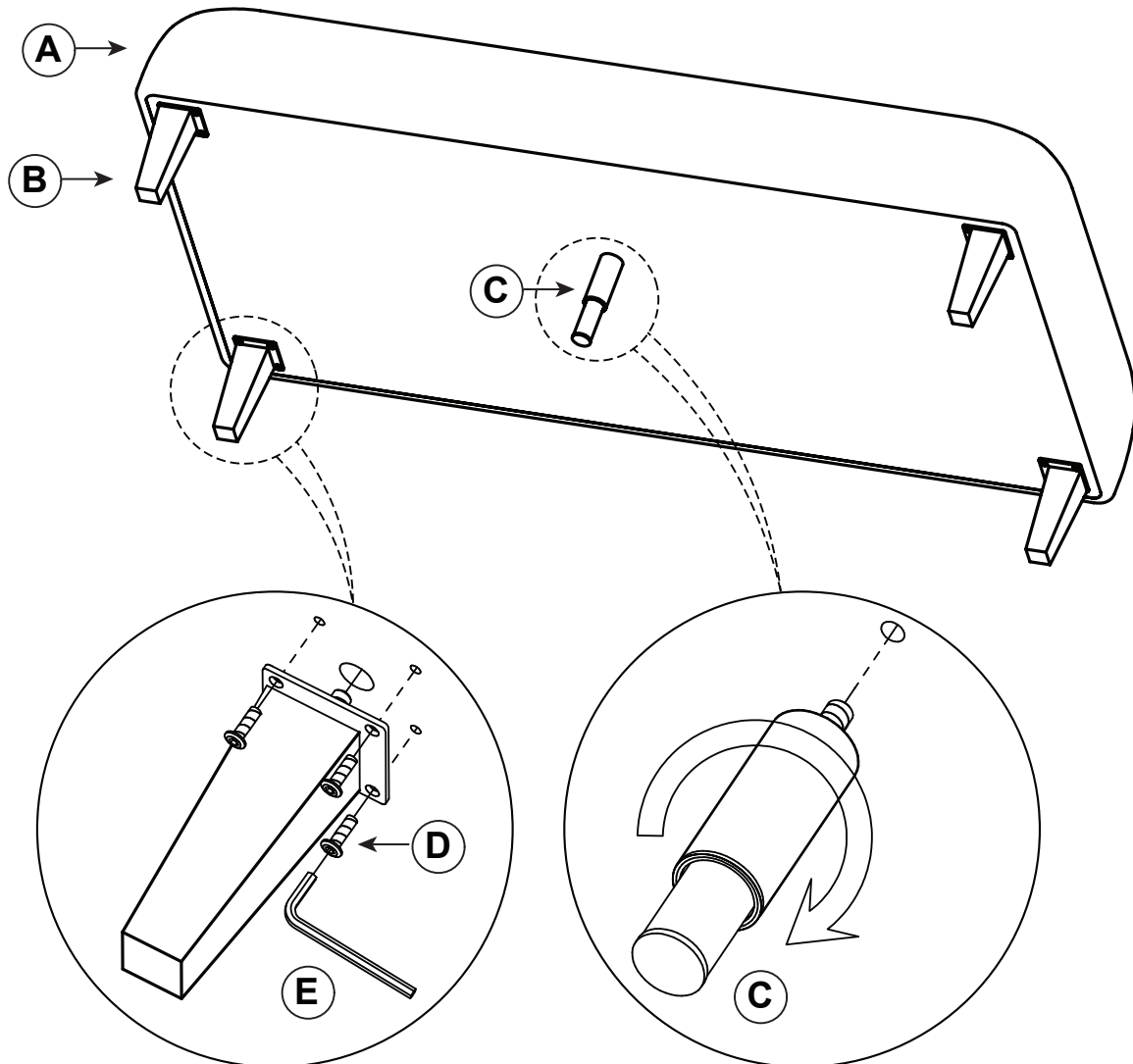


### Component Checklist

REF	PART	NAME	QTY
A		Sofa	1
B		Leg	4
C		Support Leg	1
D		20mm Screw	12
E		Allen Key	1

## Putting Me Together

**NOTE:** You will need a minimum of 2 persons to assemble due to item size and weight



- 1
  - Carefully place sofa (A) on to its back on a clean, flat surface so that the base of sofa is easily accessible.
  - Screw leg (B) into larger corner hole on base of sofa (A) until the leg base plate with 3 screw holes is facing towards centre of sofa in alignment with smaller holes as indicated.
  - Proceed to screw 3 x 20mm screws (D) through the base plate of leg (B) into the base of sofa (A) using provided allen key (E).
  - Repeat these steps on all 4 legs ensuring screws are sufficiently tightened.
- 2
  - Screw support leg (C) into the hole in centre of base of sofa (A) until firm.
  - Adjust leg height or support leg (C) as required to match the four outer legs (B).
- 3
  - Once all screws on all legs are securely tightened, carefully lift sofa into an upright position.