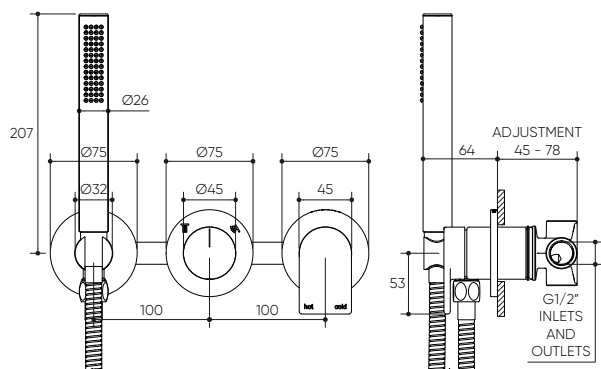







### Wall Mixer with Diverter & Hand Shower

LUCENT<sup>®</sup>



Pressure Rating: 150 - 1000kPa

Designed in Australia

Complete Kit Code	Finish	Trim Kit Code
16011PBG	 Brushed Gold	10001PBG
16011CP	 Chrome	10001CP
16011PBN	 Brushed Nickel	10001PBN
16011PGM	 Gun Metal	10001PGM
16011PCB	 Chocolate Bronze	10001PCB
16011PMB	 Matte Black	10001PMB



9936



For more information, contact:  
P. 1300 474 714 E. [info@lucentdesigns.com.au](mailto:info@lucentdesigns.com.au)  
Lucent, 15 Activity Crescent, Molendinar, Queensland 4214 Australia



All rights reserved 2024 Lucent. The images shown are for illustration purposes only and may not be an exact representation of the product. Modifications and adjustments may occur over time and the product should be used to confirm marking out and/or rough in as line drawings shown may vary from the item supplied over time. All measurements are in Millimetres and Colours are indicative and may vary from the images shown. Commercial and residential warranties may differ. Please refer to our website for full terms and conditions: <https://lucentdesigns.com.au/pages/warranty>