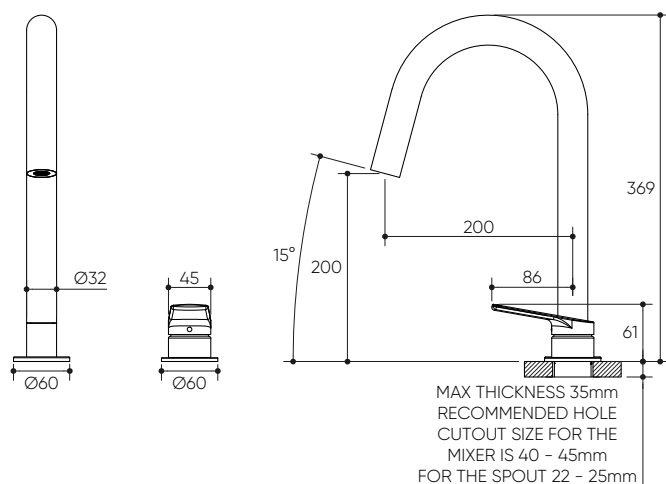


# SEREIA COLLEZIONE

## Hob Sink Mixer Set 200mm Curved Spout

### Product Specifications

# LUCENT<sup>®</sup>



### Style Switch

#### Specifications

Temperature Rating: 1-75°C

Pressure Rating: 150 - 1000kPa

#### Features

360° Swivel Spout for Enhanced Functionality

Highly Durable, Solid Brass Construction

35mm Ceramic Mixer Cartridge with 20 Year Warranty

Hidden Aerator for a Sleek, Stylish Appearance

Designed in Australia

#### Complete Kit Code

#### Finish

14017PBG	● Brushed Gold
14017CP	● Chrome
14017PBN	● Brushed Nickel
14017PGM	● Gun Metal
14017PCB	● Chocolate Bronze
14017PMB	● Matte Black



For more information, contact:  
P. 1300 474 714 E. [info@lucentdesigns.com.au](mailto:info@lucentdesigns.com.au)  
Lucent, 15 Activity Crescent, Molendinar, Queensland 4214 Australia

All rights reserved 2024 Lucent. The images shown are for illustration purposes only and may not be an exact representation of the product. Modifications and adjustments may occur over time and the product should be used to confirm marking out and/or rough in as line drawings shown may vary from the item supplied over time. All measurements are in Millimetres and Colours are indicative and may vary from the images shown. Commercial and residential warranties may differ. Please refer to our website for full terms and conditions. <https://lucentdesigns.com.au/pages/warranty>

