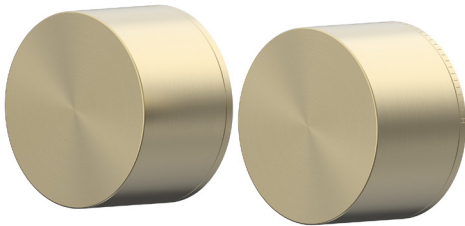
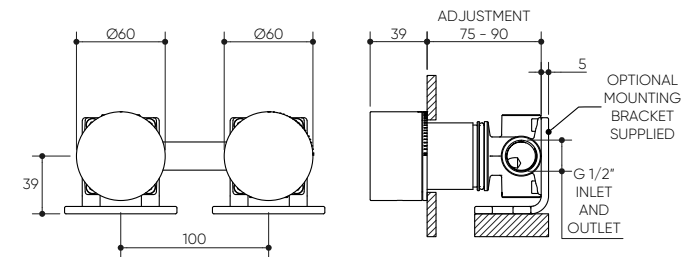


# CAHYA COLLEZIONE

## Shower/Progressive Wall Mixer with Diverter

Product Specifications

LUCENT<sup>®</sup>



### Specifications

Temperature Rating: 1-75°C

Pressure Rating: 150 - 1000kPa

### Features

- Complete Kit Includes Rough-In Kit and Trim Kit
- Includes Water-Proof Flange Patented Design
- Easily Update Mixer Design and/or Finish with Any Style Switch Progressive Collection
- Free-Flow Aerator Included in Box for Bath Installation
- High Quality, Solid Brass Backplates
- Designed in Australia

Complete Kit Code	Finish	Trim Kit Code
13039PBG	Brushed Gold	9985PBG
13039CP	Chrome	9985CP
13039PBN	Brushed Nickel	9985PBN
13039PGM	Gun Metal	9985PGM
13039PCB	Chocolate Bronze	9985PCB
13039PMB	Matte Black	9985PMB



In-Wall Body Code  
9942



For more information, contact:  
P. 1300 474 714 E. [info@lucentdesigns.com.au](mailto:info@lucentdesigns.com.au)  
Lucent, 15 Activity Crescent, Molendinar, Queensland 4214 Australia

All rights reserved 2024 Lucent. The images shown are for illustration purposes only and may not be an exact representation of the product. Modifications and adjustments may occur over time and the product should be used to confirm marking out and/or rough in as line drawings shown may vary from the item supplied over time. All measurements are in Millimetres and Colours are indicative and may vary from the images shown. Commercial and residential warranties may differ. Please refer to our website for full terms and conditions. <https://lucentdesigns.com.au/pages/warranty>

