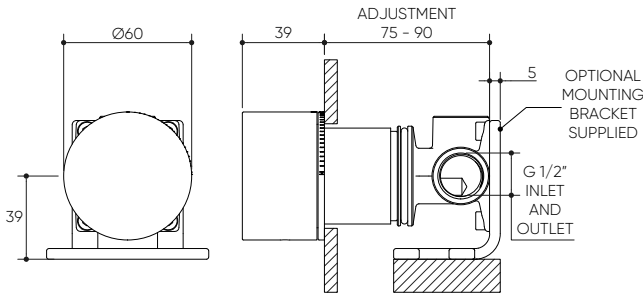


# CAHYA COLLEZIONE

## Wall Progressive Mixer

### Product Specifications

# LUCENT<sup>®</sup>



### Specifications

Temperature Rating: 1-75°C

Pressure Rating: 150 - 1000kPa

### Features

Complete Kit Includes Rough-In Kit and Trim Kit

Includes Water-Proof Flange Patented Design

Easily Update Mixer Design and/or Finish with Any Style Switch Progressive Collection

High Quality, Solid Brass Backplate

European 35mm Progressive Ceramic Mixer Cartridge with 20 Year Warranty

Designed in Australia

### Complete Kit Code

### Finish

### Trim Kit Code

13035PBG

● Brushed Gold

9929PBG

13035CP

● Chrome

9929CP

13035PBN

● Brushed Nickel

9929PBN

13035PGM

● Gun Metal

9929PGM

13035PCB

● Chocolate Bronze

9929PCB

13035PMB

● Matte Black

9929PMB



### In-Wall Body Code

9934



For more information, contact:

P. 1300 474 714 E. [info@lucentdesigns.com.au](mailto:info@lucentdesigns.com.au)

Lucent, 15 Activity Crescent, Molendinar, Queensland 4214 Australia

All rights reserved 2024 Lucent. The images shown are for illustration purposes only and may not be an exact representation of the product. Modifications and adjustments may occur over time and the product should be used to confirm marking out and/or rough in as line drawings shown may vary from the item supplied over time. All measurements are in Millimetres and Colours are indicative and may vary from the images shown. Commercial and residential warranties may differ. Please refer to our website for full terms and conditions. <https://lucentdesigns.com.au/pages/warranty>

