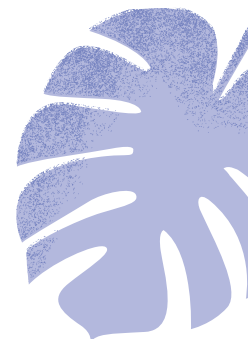


Transition: Oz to mL



The coffee industry of New Zealand is currently undergoing an important transition to meet the requirements of the Weights and Measures Act 1987.

Traditionally, the global coffee industry uses ounce (oz) measurements in reference to the different sized beverages they serve. For example, small takeaway coffee cups are typically referred to as 6oz or 8oz, and a large can be 12oz or even a 16oz.

However, New Zealand as a country commonly uses litres (L) and millilitres (mL) for metric guidance. Therefore, we have adjusted the metrics of our EcoCups to align with New Zealand standards. Our EcoCups are now listed in mL as opposed to oz. The "mL" listed is the brim capacity of the cup.

To make things easy for our customers, we are also changing a few other products to meet the standard. Please find below the list of products that have been adjusted to new metrics.



EcoCup

4oz = 110mL
6oz = 225mL
8oz = 285mL
10oz = 355mL
12oz = 400mL
16oz = 500mL



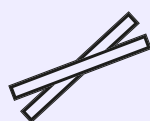
EcoBowl

4oz = 110mL
8oz = 260mL
12oz = 420mL
16oz = 560mL
24oz = 760mL



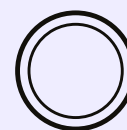
Kraft Noodle Box

16oz = 480mL
26oz = 780mL
32oz = 960mL



Bioplastic Straws

8inch Bioplastic Straw =
200mm Bioplastic Straw
5.6inch Cocktail Straw =
145mm Cocktail Straw



Bamboo Tableware

7inch Bamboo Plate =
13cm Bamboo Plate
9inch Bamboo Plate =
17cm Bamboo Plate