

RULE iL280 Plus In-Line & Submersible Pump



Description

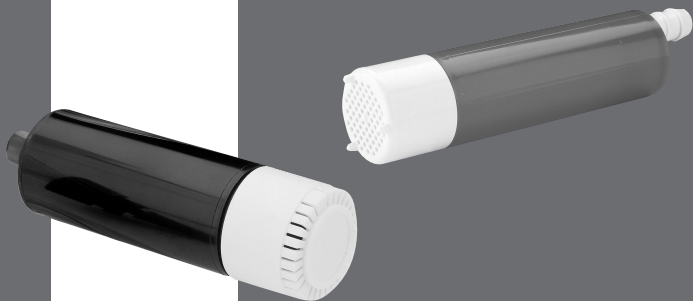
Handy in line submersible pumps for pumping diesel, fresh water and salt water. Not suitable for pumping petrol! Supplied with inlet strainer cap for direct suction, or use 1/2" hose connection. Note that this pump is not self priming. Supplied fitted with battery terminal alligator clips.

Features

- Suitable for diesel, fresh and salt water
- Quick diesel transfer with no spillage
- Water transfer, deck shower, or deck wash
- Hot water systems to 80 °C
- Continuous rating, but should not be run dry for long periods
- Output up to 18L/min@1 bar
- Connections 12,7mm (1/2") hose
- Dimensions d38mm x 165mm
- Current draw 4,5A @ 12V
- Weight 470g



rule®



(GB) Submersible and Inline Pumps

(FR) Pompes immergées et en ligne

(DE) Tauch- und In-Line-Pumpen

(IT) Pompa Sommerse e in Linea

(NL) Onderwater- en Inlinepompen

(SE) Dränkbara centrifugal och
"In-Line" pumpar

(ES) Bombas sumergibles y en línea

CE



ITT

Engineered for life

USA Tel: +1 978 281 0440

UK Tel: +44 (0) 1992 450 145

Canada Tel: +1 519 821 1990

Japan Tel: +81 (0) 45 475 8906

Germany Tel: +49 (0) 40 53 53 730

Italy Tel: +39 039 6852323

Rule Submersible and Inline Pump

Features

- Pumps fresh and sea water.
- Rapid diesel refuelling and transfer with no spillage (models iL500^{Plus}, iL280^{Plus} and iL200^{Plus} only).
- Bilge pump-out in tight areas.
- Water Transfer; Deck Showers; Deck, Anchor & General Wash-down.
- Robust, slim line with clip-on easily cleaned filter.



Instructions

Fit a length of appropriate size hose (see specification table for details) to the outlet nozzle and immerse the complete pump in liquid. Connect the battery clips to the battery terminals (+) positive to (+) positive and (-) negative to (-) negative (if powering from a car or boat battery do not use with engine running). The pump will deliver immediately.

For an in-line installation unclip the filter to expose the inlet nozzle. Connect a length of hose between the tank and nozzle. The pump must be fitted below the tank.

- Avoid dry running for long periods.
- For drinking water applications sterilize regularly.
- Store away from excessive heat and direct sunlight to avoid external damage.
- If the pump fails to perform, check for blockages (including filter), leaks and correct hose & electrical connections.

Specifications

Model	iL500 ^{Plus}	iL280 ^{Plus}	iL200 ^{Plus}	iL200
Part No.:	iL500P iL500P-24	iL280P iL280P-24	iL200P iL200P-24	iL200
Pump Type:	Centrifugal submersible and in-line pump			
Current:	12V (6amp) 24V (3amp)	12V (4.5amp) 24V (2.5amp)	12V (4.5amp) 24V (2.5amp)	12V (2.8amp)
Head:	32ft (9.7m)	32ft (9.7m)	32ft (9.7m)	25ft (7.6m)
Flow rate:	500 gph (1920 lph)	280 gph (1080 lph)	200 gph (760 lph)	200 gph (760 lph)
Rating:	Continuous*	Continuous*	Continuous*	Intermittent ^
Outlets (id hose):	3/4 (19mm)	1/2 (13mm)	1/2 (13mm)	3/8 (10mm) & 1/2 (13mm)
Pressure:	14psi (0.96bar)	14psi (0.96bar)	11psi (0.76bar)	14psi (0.96bar)
Body:	POM	POM	POM	HIP
Length:	6.5" (165mm)	6.5" (165mm)	5.6" (165mm)	5.1" (130mm)
Diameter:	1.5" (38mm)	1.5" (38mm)	1.5" (38mm)	1.4" (36mm)
Cable Length:	13ft (4m)	13ft (4m)	3ft (1m)	3ft (1m)
Weight:	1.1lbs (500g)	1.1lbs (500g)	0.5lbs (227g)	0.25lbs (113g)
Liquid:	Fresh & Sea Water / Diesel			Fresh & Sea Water
Operating Temp:	Diesel to 104°F (40°C) Water to 176°F (80°C)			Water to 140°F (60°C)

- * Continuous Duty - Should not be run dry for long periods of time.
 ^ Intermittent Duty - Should not be run for more than 20mins and rested for equal time.

WARNING

DO NOT use any Rule pump for petrol, petroleum products or any products with a flash point below 37°C (98°F).