



Hella marine



Sea Hawk-470 Light Bar with Edge Light

12/24V
MULTIVOLT

CORROSION
RESISTANT

IP67
COMPLETELY
SEALED

HD
GRILAMID
LENS

UV
RESISTANT

5 YR
WARRANTY

The Sea Hawk-470 Pencil Beam with Edge Light combines long distance light performance capable of picking out even the most distant objects, and a striking Edge Light using light pipe technology.

Edge Light has been integrated into this powerful long distance light bar to highlight your position while also providing gentle ambient lighting. The Edge Light is available in both blue or white to give your vessel a unique appearance

The Sea Hawk-470 is synonymous with performance and durability. New optics have now enhanced the spotlight function while retaining the durable corrosion-proof housing and ultra-tough Grilamid® lens.

Proudly designed and manufactured in New Zealand the Sea Hawk-470 carries a 5-year warranty. When outstanding light intensity and proven reliability is needed to safely get you home the Sea Hawk-470 Light Bars are the preferred choice.



SEA HAWK-470

EDGE LIGHT

White or Black
Housing Option

Corrosion Resistant

Long Range Beam

113,000 Candela

Blue or White Edge Light

UV Resistant

Double Mounting Bracket

info@hellamarine.com

www.hellamarine.com

Sea Hawk-470 Light Bar with Edge Light

The unique corrosion proof housing provides exceptional durability and long-term reliability. The thermally conductive polymer housing draws heat from internal electronics for reliable operation.

The heavy duty Grilamid® lens offers an unbeatable combination of properties including toughness against impact, long term UV stability and resistance to commonly used chemicals and washes. Grilamid® will not lose its lustre or embrittle over time and will remain clear for the life of the product.

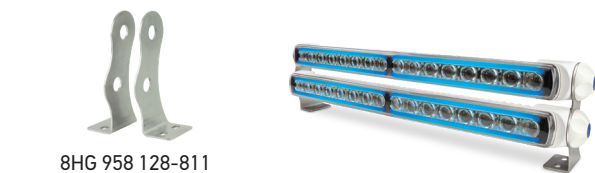
Multivolt™ circuitry means the dual function lamp can be used on 12V or 24V DC, whilst only consuming 36W on the pencil beam.

The adjustable mounting system ensures for easy installation and flexibility for any orientation. Can be mounted upright or pendant.

Part Number	Description
2LT 958 140-501	Black Housing - White Edge Light
2LT 958 140-521	Black Housing - Blue Edge Light
2LT 958 140-511	White Housing - White Edge Light
2LT 958 140-531	White Housing - Blue Edge Light

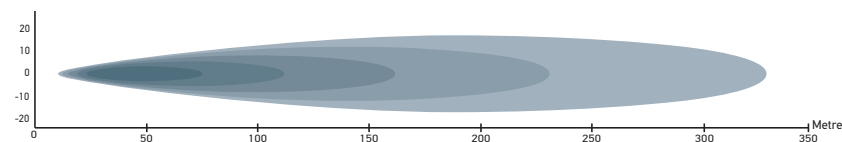
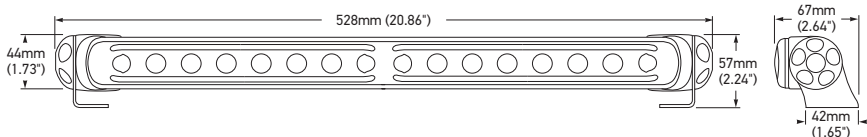
8HG 958 128-811	Double Bracket Accessory
-----------------	--------------------------

Optional double bracket enables multiple lamps to be stacked to increase the light output or spread of light.



Product Specifications	
Mounting	Upright or pendant
Voltage	Multivolt™ 12/24V DC
Max. Power Consumption	Pencil Beam: 36W 12V 2.7A 24V 1.4A Edge Light: 4W 12V 300mA 24V 150mA
Maximum Luminous Intensity	113,000 candela
Light Performance	1 Lux @ 330m
Beam Angle	8° x 4°
Protection	Reverse polarity and transient spike protection IP 6K7 (Protection against dust and temporary water immersion) IP 6K9K (Protection against dust and high-pressure/steam jet cleaning)
Cable Length	Pre-wired with 2.5m of tinned multi-core cable
Lens Material	Heavy duty Grilamid®
Bracket	Polished 316 stainless steel
Compliance	CE ECE R10 UKCA

Check local laws and requirements before use.



Hella marine AsiaPacific - MiddleEast
HELLA New Zealand Ltd
81-83 Ben Lomond Crescent
Pakuranga 2140,
Auckland, New Zealand
Phone +64 9 577-0366
info@hellamarine.com

Hella marine Australia
HELLA Australia Pty Ltd
4 Hargrave Place
Mentone, Victoria 3194 Australia
Techline: 1800 061 729
hellaorders@hella.com
info.au@hella.com

Hella Automotive Sales, Inc.
201 Kelly Drive
Peachtree City,
GA 30269 USA
Kevin.Watkiss@hella.com
+1 770-626-2319

HELLA GmbH & Co. KGaA
Rixbecker Str. 75
59552 Lippstadt / Germany
Phone: +49 29 41 38 66 44
Rita.Mueller@hella.com