



**Hella marine**  
Vision and Innovation

# Product News

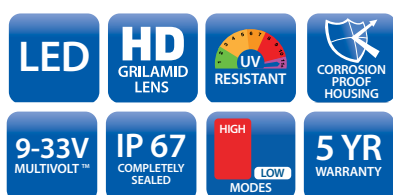
Latest additions to the Hella marine range



**2200 Lumen**  
**Only 25w**

## Sea Hawk-XLB

With new easy to install mounting system.



- 12 high performance LEDs
- 2200 lumen actual output
- Low power consumption 25W
- 3 engineered optic designs
- Thermally conductive 'non-metal' housing
- Completely sealed
- Dual output function\*
- Versatile 316 stainless steel mounting brackets
- Designed and manufactured in New Zealand
- 5 Year Warranty



Friction fitted clamp enables lamp to be easily adjusted to illuminate at various angles. Versatile 316 Stainless Steel bracket design allows upright or pendant mount with feet aimed in or out.



Bracket mounted out - bracket mounted in.

Hella marine have improved the popular Sea Hawk-XLB floodlights with an easy to install new bracket assembly. It simply clips onto the ends of the light bar and can be mounted upright or pendant to accommodate most applications. Nuts, bolts and mounting brackets are made from marine grade 316 stainless steel.

### Brighter and more efficient!

The new XLB floodlights generate over 2200 lumens of crisp, white light to illuminate the hardest to see places while continuing the durability and efficiency advantages accustomed to the proven Sea Hawk range.

### 3 Engineered light patterns

Advanced optical systems deliver incredible illumination without glare. Spread lamps illuminate a wide, close-range spread over a cockpit, foredeck or working area. Spot lamps provide a more concentrated illumination for tuna towers, yacht masts or forward facing lighting on a variety of applications. New Pencil Beam lamps have a narrower 5° light angle and are ideal for locating buoys, moorings and other objects over longer distances.

### Unique Corrosion Proof Housing

Sea Hawk-XLB housings are precision injection moulded from thermally conductive ceramic polymer. This advanced material draws heat from internal electronics for reliable long-term operation and eliminates the need for an aluminium housing removing corrosion risks in the harsh marine environment.

### Integrated Dual Outputs

High output (2200 Lumens / 25W) and low light (220 lumens / 5W) intensity functions in both Spread and Spot lamps. \* Not available in Pencil Beam lamps.

### Multivolt 9-33V DC

Advanced electronics ensure constant and reliable light output and lamp protection even under severe voltage fluctuations and low battery voltages.

### Pre-wired with marine cable

High quality tinned cable assemblies mean time saving and completely sealed installations.

### Designed and manufactured in New Zealand

All Sea Hawk lamps carry a 5 year warranty.

**New !**

**Easy to Install**

**Mounting System**

Each lamp comes supplied with mounting adaptors that snap onto the ends of the lamp and 316 stainless steel 'L' shaped brackets.



2 x Nuts, End Adaptors, Friction Washers, 316 Stainless steel brackets, End Knobs, Set Screws and Screw Caps supplied with each lamp.



Adjustable bracket design enables lamp to be angled and distance between fastening points changed depending on installation area.



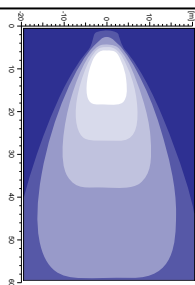
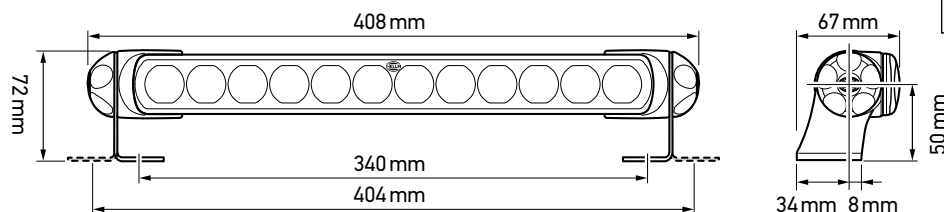
**Accessory** - An optional double bracket enables you to stack multiple lamps. Increase the light output or mix different optics options for multiple applications. See over leaf for more details.

## Hella marine Sea Hawk-XLB series.

<b>Material Description</b>	'Non metal' Thermally conductive ceramic polymer housing Heavy duty Grilamid lens
<b>Mounting</b>	Upright or pendant
<b>Light Output</b>	2200 lumens / 5000K (White)
<b>Cable</b>	Pre-wired with 2.5m of tinned marine cable
<b>Operating Voltage</b>	Multivolt™ 9-33V DC
<b>Degree of Protection</b>	IP 6K7 / IP6K9K - Completely sealed
<b>Power Consumption</b>	High Intensity Mode 25W ( 2A@12V / 1A@24V ) Low Intensity Mode 5W (not applicable to the Pencil Beam lamps)
<b>Weight</b>	840g (including cable)
<b>Approvals</b>	CE, RCM

### Mounting hardware included with each lamp

2 x Stainless Steel Mounting Feet  
2 x Stainless Steel M8 x 20mm Set Screws  
2 x Stainless Steel M8 Nuts  
2 x End Adaptors  
2 x Friction Washers  
2 x End Knobs  
2 x Screw Caps



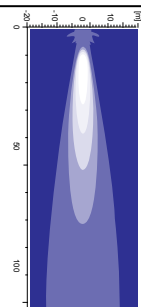
**LED**  
Multivolt

### Spread 45° Lens LED Floodlights

Voltage	Housing Colour	Stainless Bracket	Part Number
9-33V DC	Black Housing	50mm Supplied	2LT 958 040-701
9-33V DC	White Housing	50mm Supplied	2LT 958 040-711

**Spread pattern applications;**  
Cockpit, foredeck, working areas

Linear Spread Optic with 50mm  
Stainless steel bracket



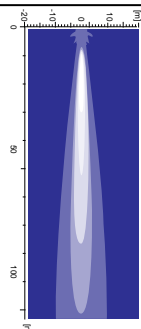
**LED**  
Multivolt

### Spread 10° Lens LED Deck Lamps

Voltage	Housing Colour	Stainless Bracket	Part Number
9-33V DC	Black Housing	50mm Supplied	2LT 958 040-651
9-33V DC	White Housing	50mm Supplied	2LT 958 040-661

**Spot pattern applications;**  
Low speed docking, forward facing to illuminate objects in the water,  
spreader lamps on yacht masts

Circular concave Spot Optic with  
50mm Stainless steel bracket



**LED**  
Multivolt

### Pencil Beam 5° Lens LED Floodlights

Voltage	Housing Colour	Stainless Bracket	Part Number
9-33V DC	Black Housing	50mm Supplied	2LT 958 040-221
9-33V DC	White Housing	50mm Supplied	2LT 958 040-231

**Pencil beam pattern applications;**  
Searching for buoys and other objects over longer distances.  
**Note:** Dual output feature is not available in the pencil beam lamps

Circular convex Pencil Beam Optic with 50mm  
Stainless steel bracket



### Double Mounting Brackets Accessory

Part Number: 8HG 958 128-811

**Mounting Pack includes:**

- 1 x Left Hand 316 Stainless Bracket
- 1 x Right Hand 316 Stainless Bracket

The optional double bracket accessory enables you to stack multiple lamps. Either increase the light output or mix different optic options for multiple applications or a more dynamic light output.



Lamps not included with  
accessory brackets