



**Hella marine**

*Vision and Innovation*

# Product News

Latest additions to the Hella marine range



**New!**

## New! Module 70 - Generation IV

Increased light output and new premium Corosafe coating in the same compact design

The popular Module 70 LED floodlight has been seriously upgraded. Now producing 2,500 lumens of light and available in two different lens options, the 4th generation is also finished with a new Corosafe coating for increased resistance to corrosion..

Equipped with 3 high-performance multichip LEDs the new Module 70 LED floodlights produce 2,500 lumens of crisp white light while consuming just 30W or power. (2.5A @ 12V DC)

Now available in two different lens options - the close-range lens offers a wide and even distribution, ideal for cockpit, foredeck and work area illumination. The narrower Long-range lens is ideal for a mid range search light or if mounted higher up a tower.

Completely sealed (IP 6K9K) and coated with the new CoroSafe technology this lamp is particularly suitable for the tough marine climate. Two extra layers and the combination of different coating processes offer improved protection from damage and make the work lamp substantially more resistant to corrosion.

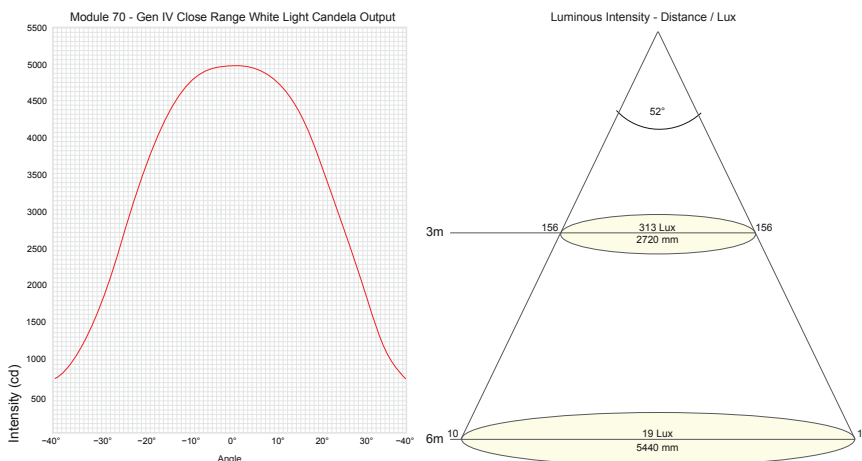
Advanced Multivolt™ 9-33V electronics ensure reliable illumination and lamp protection even under sever voltage fluctuations and low battery voltage. Pre-wired with marine cable and a single bolt 316 stainless steel bracket, this work light can be installed quickly.

Like all Hella marine LED lamps the Module 70 is supported with a 5 year warranty for complete peace of mind.



- 2500 lumen output
- 3 High Performance Multichip LEDs
- Low power consumption 30W
- Multivolt™ 9-33V DC
- 2 different optic designs
- Pre-wired with marine cable
- Fully sealed (IP 67)
- Premium Corosafe coating
- 5 year warranty

### Module 70 - Gen 4 Candela and Lux Performance. Close Range Lens



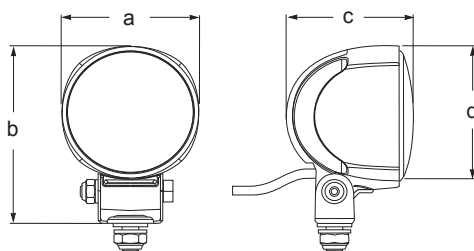
New CoroSafe coating technology offers improved protection and is substantially more resistant to corrosion.

[www.hellamarine.com](http://www.hellamarine.com)

# Product News

## Module 70 LED Floodlight - Generation IV.

<b>Lens Description</b>	Impact resistant glass lens
<b>Housing Description</b>	Die cast aluminium body and Corosafe coating
<b>Light Source Type</b>	3 multichip LEDs
<b>Colour Temperature</b>	6500K (White)
<b>Operating Voltage</b>	9-33V
<b>Power Consumption</b>	30W ( 2.5A @ 12V DC / 1.25A @ 24V DC)
<b>Degree of Protection</b>	IP6K9K, IP 6K8 (Completely sealed)
<b>Cable</b>	Pre-wired with 1m marine cable
<b>Installation</b>	Upright or pendant
<b>Manufactured In</b>	Austria



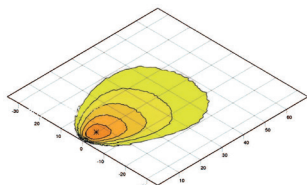
### Dimensions

a = 83mm / 3.27"
b = 110mm / 4.33"
c = 74mm / 2.91"
d = 83mm / 3.27"

## Module 70 LED Floodlights - Generation IV

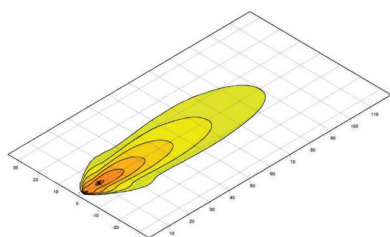
### Close Range Illumination - White LED

Voltage	Lens	Housing Colour	Part Number
9-33 V DC	Close Range	White Housing	1GO 996 476-191
9-33 V DC	Close Range	Black Housing	1GO 996 476-211



### Long Range Illumination - White LED

Voltage	Lens	Housing Colour	Part Number
9-33 V DC	Long Range	White Housing	1GO 996 476-201
9-33 V DC	Long Range	Black Housing	1GO 996 476-221



lux >= 0 1 2 4 8 16 32

