



Hella marine
Vision and Innovation

Product News

Latest additions to the Hella marine range

#0316

New!

Livewell Lamps

Sealed LED lamps specifically designed for illuminating live bait tanks

Completely sealed, power saving LED Livewell / Baitwell lamps are designed for installation into live bait tanks with wall thicknesses up to 26mm.

Supplied with a plastic nut and rubber gaskets for a watertight seal, installation is swift and secure into often inaccessible locations.



Housing Description	Heavy duty polycarbonate
Installation	Pre-wired with 120mm of cable
Operating Voltage	12V DC
Power Consumption	0.5W (< 0.04A@12V / < 0.02A@24V)
Degree of Protection	IP 67 - Completely sealed
Mounting	Single hole
	Rubber gaskets included
Weight	75g (including cable)



White Light LED Livewell Lamp		
Voltage	Lens Color	Part Number
12V	Clear	2JA 998 543-051



Blue Light LED Livewell Lamp		
Voltage	Lens Color	Part Number
12V	Clear	2JA 998 543-031



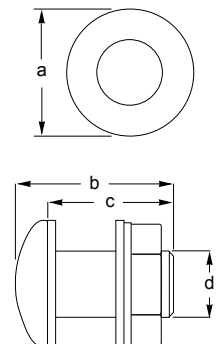
Amber Light LED Livewell Lamp		
Voltage	Lens Color	Part Number
12V	Amber	2JA 998 543-001



Red Light LED Livewell Lamp		
Voltage	Lens Color	Part Number
12V	Red	2JA 998 543-021



Packaging for aftermarket presentation



Dimensions

- a = 50.0 mm / 1.97"
- b = 49.0 mm / 1.93"
- c = 40.0 mm / 1.57"
- d = 26.0 mm / 1.02"



Hella marine Australia
Southern Road,
Mentone, Victoria. 3194
P.O. Box 89, Mentone. 3194

Customer Service: 1800 061 729
Telephone: (03) 9581 9333
E-mail: custservice@ha.hella.com
www.hellamarine.com