



**Hella marine**  
Vision and Innovation

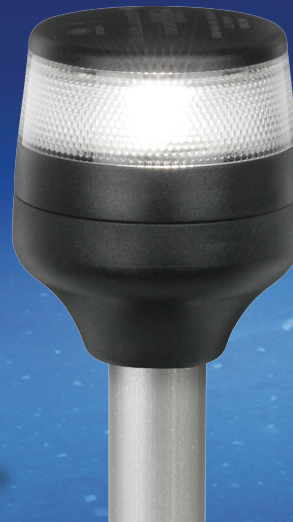
# Product News

Latest additions to the Hella marine range

**NAViLED® 360**

## 2NM Anchor Pole Mount Lamps

with fixed, fold down and plug-in pole options



**New !  
2NM Anchor  
Lamps**

**Compact LED anchor lamps featuring advanced materials and electronic protection for 'fit and forget' reliability. Using less than 1W consumption, NaviLED®360 lamps save power onboard.**

### No maintenance. Ultra long service life

Hella marine LED technology has no filaments to break making NaviLED® lamps extremely shock and vibration proof for reliability and safety in demanding conditions.

### Multivolt™ 9-33V DC

Advanced electronics ensure reliable illumination and lamp protection even under severe voltage fluctuations and low battery voltages.

Multivolt™ circuitry also provides reverse polarity, spike and over-voltage protection for long life and reliable operation.

### Safe and highly visible

Hella marine optics deliver 100% correct light output and enhance visibility compared to bulb navigation lamps.

### Fully sealed for life. IP 67 Certified

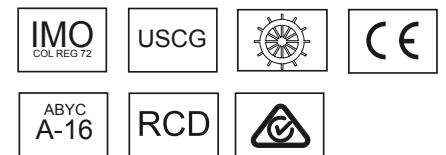
Each NaviLED® lamp is a completely sealed unit, highly UV and corrosion resistant.

### Pre-wired with marine cable

Quality twin core marine cable assemblies are used on all lamps ensuring time saving, completely sealed installations.

### Internationally certified

Meets the requirements of COLREG, USCG, ABYC A-16, Wheelmark, RCD, Maritime NZ, CE, RCM

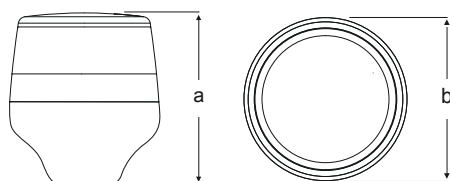
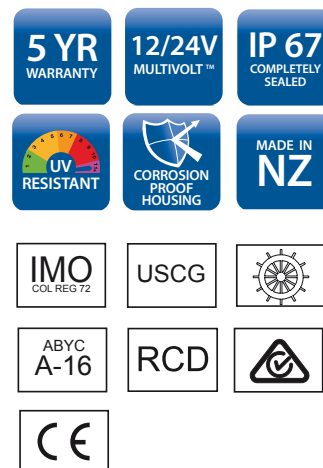


- 2NM Internationally approved
- Low power consumption (<1W)
- Multivolt™ 9-33V DC
- Completely sealed IP67
- Ultra long service life
- Variety of mounting options
- Range of pole lengths
- Made in New Zealand
- 5 year warranty



## NaviLED 360 Anchor Lamps - 2NM All Round White

<b>Housing Material</b>	UV resistant, enhanced impact plastic
<b>Lens Housing Material</b>	Ultra heavy duty Grilamid®
<b>Minimum Visible Distance</b>	2 Nautical Mile
<b>Cable</b>	Pre-wired with twin core marine cable
<b>Operating Voltage</b>	Multivolt™ 9-33V DC
<b>Power Consumption</b>	< 1W
<b>Degree of Protection</b>	IP 67 - Completely Sealed
<b>Approvals</b>	IMO Col Reg 72, USCG, ABYC A-16, Wheelmark, RCD, Maritime NZ



### Lamp Dimensions

a = 70mm / 2.76"  
b = 60mm / 2.36"



**LED**  
Multivolt

### Fixed Pole 2 Nautical Mile Anchor Lamps

Overall Length	Visibility	Black Base	White Base
6" / 167mm	2 NM	2LT 980 960-201	2LT 980 960-211

Robust fixed pole mount with two counter-sunk holes.



2LT 980 960-201



**LED**  
Multivolt

### Fold Down Pole 2 Nautical Mile Anchor Lamps

Overall Length	Visibility	Black Base	White Base
12" / 315mm	2 NM	2LT 980 960-301	2LT 980 960-311
20" / 510mm	2 NM	2LT 980 960-321	2LT 980 960-331
24" / 605mm	2 NM	2LT 980 960-341	2LT 980 960-351
34" / 865mm	2 NM	2LT 980 960-361	2LT 980 960-371

Pole angle can be adjusted through 180 degrees and secured with locking collar.  
Removable wedge supplied for mounting onto different surface cambers.



2LT 980 960-301

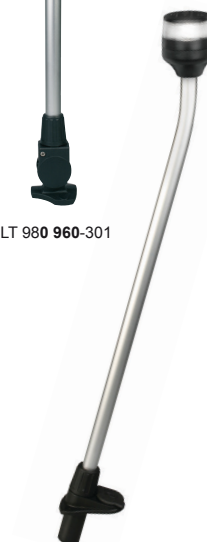


**LED**  
Multivolt

### Plug-in Pole 2 Nautical Mile Anchor Lamps

Overall Length	Visibility	Black Base	White Base
24" / 610mm	2 NM	2LT 980 960-401	2LT 980 960-411
42" / 1080mm	2 NM	2LT 980 960-421	2LT 980 960-431
54" / 1380mm	2 NM	2LT 980 960-441	2LT 980 960-451

Pole plugs into lamp base and is fixed into position with a locking collar.  
Rubber cap supplied to cover hole when pole is removed.



2LT 980 960-431