

NAViLED 360 PRO

New modern design
with increased efficiency!



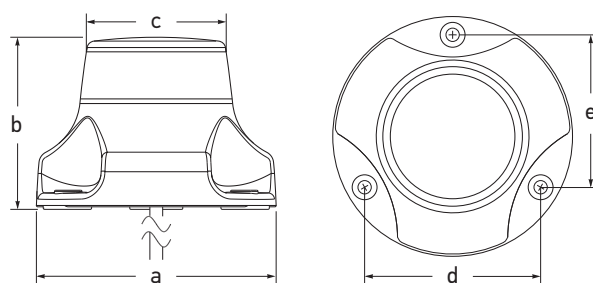
- Modern lower profile design
- Wheelmark approval across the range
- Same mounting footprint
- Internationally approved
- Ultra low power consumption
- UV, corrosion & impact resistant
- Completely sealed IP67
- Multivolt 12/24V DC
- 2 Nautical Mile visibility

NaviLED 360 PRO 2NM ALL ROUND NAVIGATION LAMPS

The ultra-reliable NaviLED 360 series has been updated to a new lower profile design with enhanced efficiency. Maintaining the same mounting footprint and reliability of the original design, the new version also incorporates Grilamid® lens material for extreme durability. The NaviLED 360 PRO also now features Wheelmark certification across the complete range.

Certified to 2NM visibility and suitable for vessels up to 50m, the White, Red and Green LED options make this series ideal for commercial vessels involved in fishing, trawling, towing, diving, pilotage duties or NUC. Black and white housings also allow the lamps to integrate with the style and colour of the vessel.

Featuring a completely sealed design, UV and impact resistant materials and pre-wired installation the NaviLED 360 PRO range is supported with a 5 year warranty for complete peace of mind.



Dimensions:

a =	90mm	(3.54")
b =	68mm	(2.68")
c =	53mm	(2.09")
d =	66mm	(2.60") (mounting holes)
e =	57mm	(2.24") (mounting holes)

Light Colour	Visibility	Black Housing	White Housing
White	2NM	2LT 980 910-121	2LT 980 910-131
Red	2NM	2LT 980 910-521	2LT 980 910-531
Green	2NM	2LT 980 910-321	2LT 980 910-331

Power Consumption	<1.5W
Operating Voltage	Multivolt 12/24V
Dimensions (W,H)	90 x 68 mm (3.54" x 2.68")

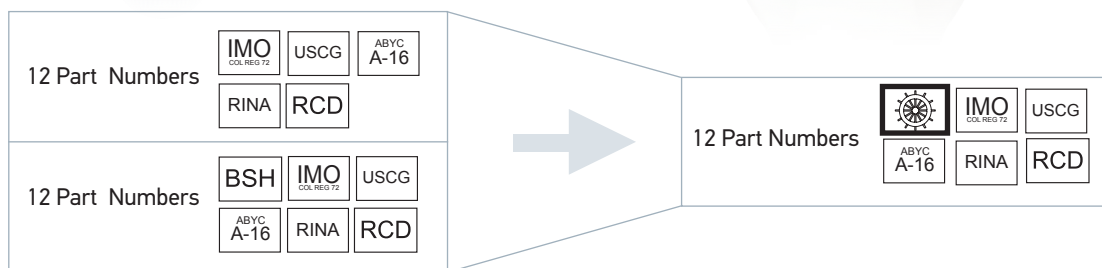
NAVILED 360



NAVILED 360 PRO



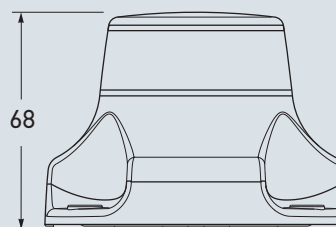
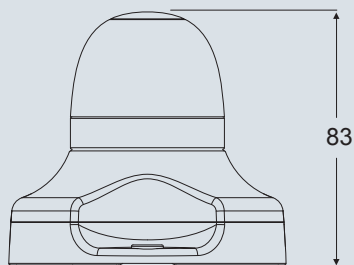
Range Simplification



**Simplified
Certification**

One combined series with all International approvals including Wheelmark which is the European regulatory marking of all marine equipment, as defined in the Marine Equipment Directive, 96/98/EC. This supersedes products previously nominated as 'BSH' certified.

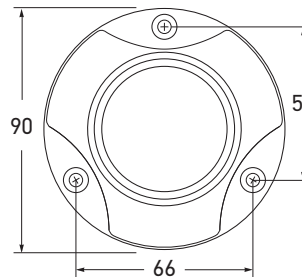
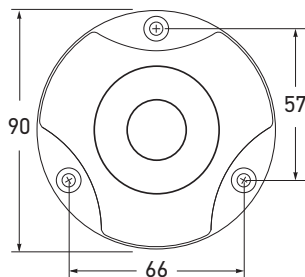
Design



Lower Profile

Modern Design

Mounting Footprint



**Same Mounting
Footprint**

Warranty

5 YR
WARRANTY

All Hella marine LED based lighting products carry a Five-Year Warranty providing peace of mind that the product will stand the test of time.

**Continued
Quality**