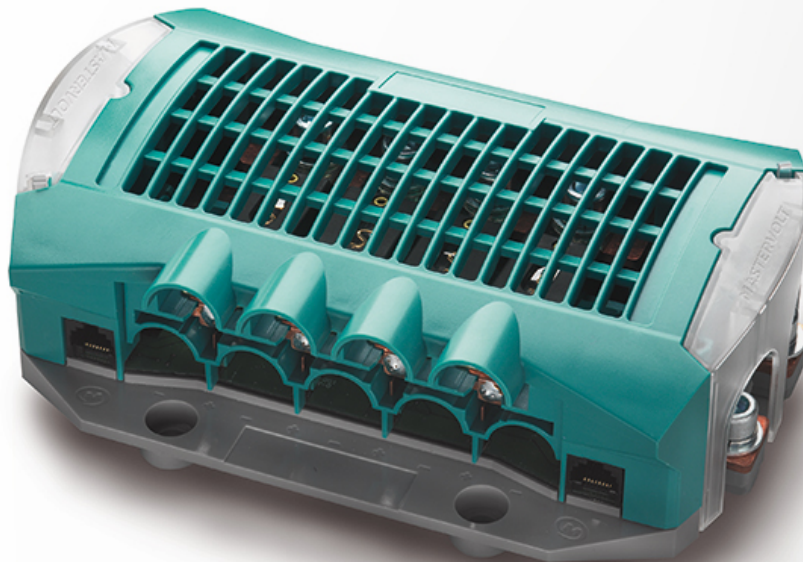


# DC Distribution 500



Product code: 77020200

The DC Distribution 500 is the smallest distribution model available. It connects up to four DC devices, such as a battery charger, inverter, alternators and solar panels. With the plug & play cable it can be easily connected to the MasterBus network. The EasyView panel gives all fuses logical names, for instance, referring to the connected equipment, to ensure you receive understandable error notifications (for example: battery charger fuse defect).

The DC Distribution always comes with four ANL fuses: 80, 80, 125 and 160 A, and a spare fuse of 125 A. Replacement fuses and other amperages can be found [here](#).

# Specifications

## General specifications

MasterBus powering	no
Languages on display	ENG, NL, DE, SP, IT, FRA, FIN, SWE, DEN, NOR
Battery voltage	12, 24 or 48 V DC
Current	300 A cont. / 500 A for 5 minutes
Standard fuses	80 A (2x), 160 A and 125 A - ANL type (deviating values can be ordered separately)
Spare fuse	125 A - ANL type
Alarms	fuse monitoring
Dimensions, h x w x d	150 x 216 x 65 mm
Weight	5.9 x 8.5 x 2.6 inch
	1.2 kg
	2.6 lb
Delivered with	four standard fuses and one spare fuse, hex tool, MasterBus terminator, MasterBus cable, cable protections for DC connections

## Technical specifications

Protection degree	IP21
-------------------	------