

BEP DC SYSTEMS MONITOR (DCSM)

Specifications:

- 2.8" Colour QVGA LCD
- Input voltage 8-32VDC
- Dimensions: Width 90mm x Height 100mm
- Backlit keypad

Monitors:

- Charge/discharge amps for up to two banks
- Capacity remaining in A/h & %
- Battery condition
- Tank fluid level
- Circuit status

Features:

- 8 Generic, user configurable inputs
- Programmable high/low audio visual alarms for volts, amps and tank levels
- Backlit keypad and dimmable screen
- Can be panel or surface mounted
- User programmable labels
- User programmable alarm set points

Included in supply:

1 x 450A 50mV Shunt (83mm x 45mm x 44mmh)

1 x Shunt cable 5m

Part Numbers

BEP DC Systems monitor
 327015 (BEP 80-600-0022-00)

Additional Shunt 450A 50mV

325938 (BEP LB-450-50)

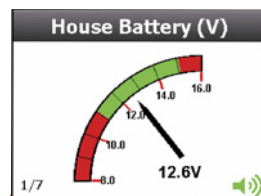
Shunt cable 5m

205960 (BEP 600-DCM-5M)

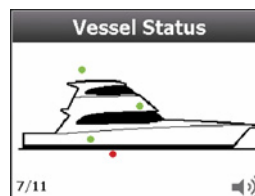
Shunt cable 10m

205961 (BEP 600-DCM-10M)

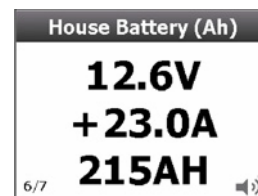
DC Systems Monitor (DCSM) is designed and manufactured by BEP. This state of the art full colour monitor is made to meet the systems monitoring requirements of the modern vessel. The battery status as well as those of circuits like bilge pumps and nav lights can be monitored. In addition, fresh, grey and black water systems can be monitored. The DCSM display features a clear, extra large type face. This allows for more detailed on-screen information and increased clarity. The screen has back lighting for easy night time viewing. The display presents various user programmable options. See sample screens below.



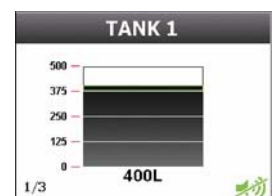
Display Type



Circuit Status



DC Power Meter



Tank Level

- Configure the DCSM to show the data in analogue, digital and graphic form.

- Displays the status of important circuits such as bilge pumps and nav lights (on/off) in graphic and numeric form

- Displays voltages of multiple battery banks (0-32Vdc).
- Displays charge and discharge (A) and capacity (Ah) of two battery banks (Optional second shunt required)
- High/Low level alarms

- View tank level information for multiple tanks in numeric and graphic forms. Resettable when leaving the boat.