

M-290 SERIES BATTERY DISCONNECT SWITCHES



M-290-01



Description

M-290 Series Battery Disconnect Switches are marine grade, manual, master disconnect switches. The M-290 switches shown are 36V Dual Pole, Single Throw (DPST) and can be used to disconnect the battery from the vehicle electrical system. The shown switches have a 1000A intermittent current rating for 15 sec ON, 5 min OFF. Disconnecting the battery from the electrical system prevents potential thermal events and ensures system shut down during maintenance or emergency. Battery disconnect switches also prevent parasitic loads from draining the battery during inactivity.

Web Resources

Download 2D print and technical resources at:
littelfuse.com/M290

Ordering Information

PART NUMBER	DESCRIPTION	AMPERAGE	UL LISTED
M-290-01 *	36V Marine Grade Battery Disconnect Switch	175A	
M-290-05 *	36V Marine Grade Battery Disconnect Switch	125A	•

* Box and Retail Blister Pack Available



Visit Littelfuse.com for the most up-to-date product information. Littelfuse products are designed for specific applications and should not be used for any purpose (including, without limitation, automotive applications) not expressly set forth in applicable Littelfuse product documentation. Warranties granted by Littelfuse shall be deemed void for products used for any purpose not expressly set forth in applicable Littelfuse product documentation. Littelfuse shall not be liable for any claims or damages arising out of products used in applications not expressly intended by Littelfuse as set forth in applicable Littelfuse product documentation.

Features and Benefits

- Marine grade, brass case
- O-ring Sealed options in bushing
- UL listed P/Ns
- Compact design
- Silver plated contact options for high conductivity and low contact resistance

Specifications Overview

Max Input Current:	1000A intermittent for 15 sec ON, 5 min OFF
Voltage Rating:	32V DC
Housing:	Brass
Contacts:	Two silver plated brass 3/8-24 studs Two brass 10-32 studs
Circuitry:	DPST

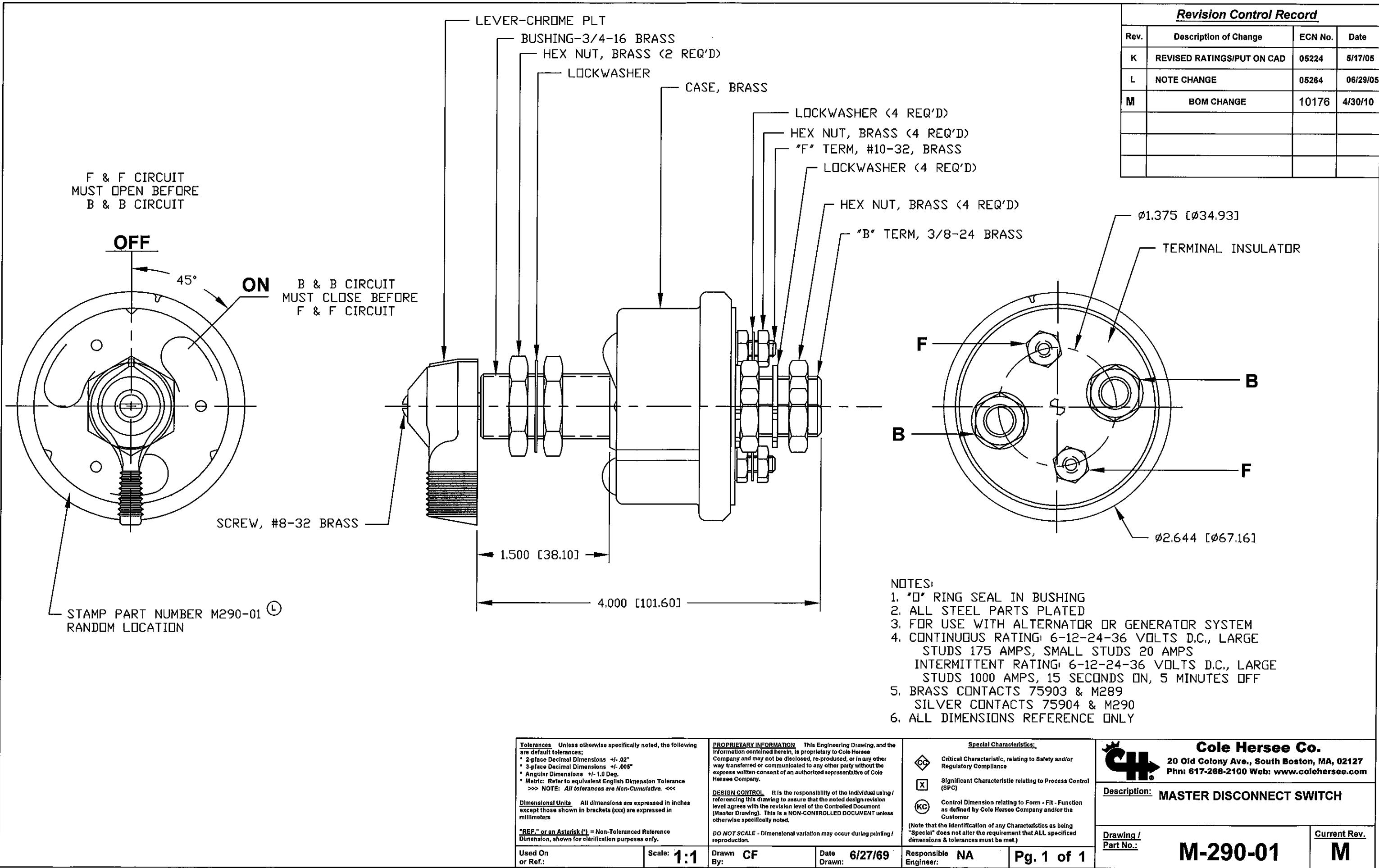
Applications

- Commercial Marine
- Boating
- Emergency Vehicles
- Heavy Duty Truck
- Bus/Transit

Recommended Products



**24505 & 24505-01
Lockout Lever Kit**



Tolerances Unless otherwise specifically noted, the following are default tolerances:
* 2-place Decimal Dimensions +/- .02"
* 3-place Decimal Dimensions +/- .005"
* Angular Dimensions +/- 1.0 Deg.
* Metric: Refer to equivalent English Dimension Tolerance
>>> NOTE: All tolerances are Non-Cumulative. <<<

Dimensional Units All dimensions are expressed in inches except those shown in brackets (xxx) are expressed in millimeters

"REF." or an Asterisk (*) = Non-Toleranced Reference Dimension, shown for clarification purposes only.

Used On
or Ref.:

Scale: **1:1**

PROPRIETARY INFORMATION This Engineering Drawing, and the information contained herein, is proprietary to Cole Hersee Company and may not be disclosed, re-produced, or in any other way transferred or communicated to any other party without the express written consent of an authorized representative of Cole Hersee Company.

DESIGN CONTROL It is the responsibility of the individual using / referencing this drawing to assure that the noted design revision level agrees with the revision level of the Controlled Document (Master Drawing). This is a NON-CONTROLLED DOCUMENT unless otherwise specifically noted.

DO NOT SCALE - Dimensional variation may occur during printing / reproduction.

Drawn By:

CF

Date

6/27/69

Responsible Engineer:

NA

Pg. 1 of 1

Special Characteristics:



Critical Characteristic, relating to Safety and/or Regulatory Compliance



Significant Characteristic relating to Process Control (SPC)



Control Dimension relating to Form - Fit - Function as defined by Cole Hersee Company and/or the Customer

(Note that the identification of any Characteristics as being "Special" does not alter the requirement that ALL specified dimensions & tolerances must be met.)



Cole Hersee Co.

20 Old Colony Ave., South Boston, MA, 02127
Phn: 617-268-2100 Web: www.colehersee.com

Description: **MASTER DISCONNECT SWITCH**

Drawing /
Part No.:

M-290-01

Current Rev.

M