

# Battery Master Switch Single Pole 150A

**CODE NUMBER:** 530102

### GENERAL

Fixed handle with ergonomic grip is removable for installation. Tested to 200 hours salt spray resistance.

### ELECTRICAL

Rated Voltage: 48VDC maximum  
Rated Current: 150/1000 Amps sustained/5 secs  
Configuration: Normally Open (N/O)

### PHYSICAL

Termination: M10 copper studs  
Stud Torque:  $9 \pm 1.0$  Nm  
Contacts: Copper  
Hardware: Brass nuts and washers  
Construction: Reinforced plastic body with zinc plated and epoxy coated die cast frame and thermoplastic handle.

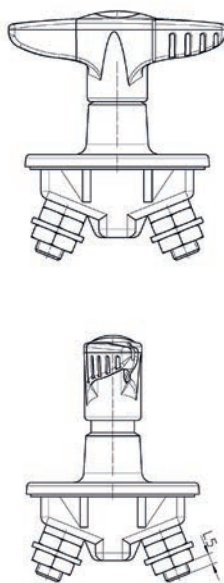
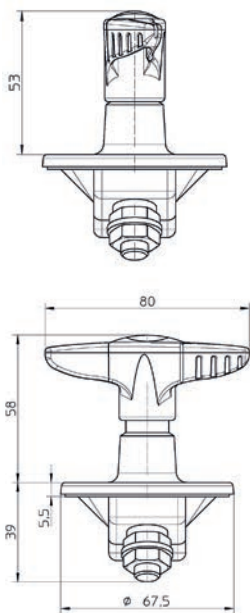
Environmental: IP65  
Operating Temp:  $-40^{\circ}\text{C}$  to  $+85^{\circ}\text{C}$   
Dimensions: 80mmL x 80mmW x 97mmH  
Weight (nominal): 240 Grams

### SPARE PARTS

Handle: Order no. 580011  
Cap: Order no. 580010



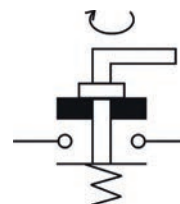
A robust device ideal for a multitude of heavy current switching applications in boat and yacht applications. Constructed from quality materials and sealed to protect from harsh environmental conditions.



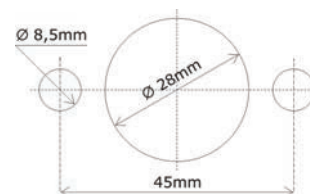
CLOSED

OPEN

Connection



Fixing





# Battery Master Switch Single Pole 150A

**CODE NUMBER:** 530100

### GENERAL

Fixed handle with ergonomic grip is removable for installation.  
Tested to 200 hours salt spray resistance.

### ELECTRICAL

Rated Voltage: 48VDC maximum  
Rated Current: 150/1000 Amps sustained/5 secs  
Configuration: Normally Open (N/O)

### PHYSICAL

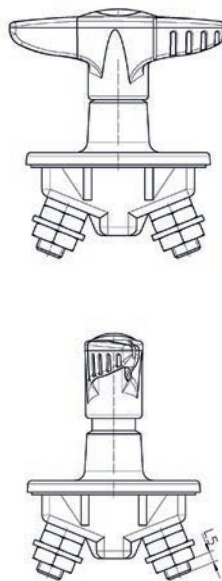
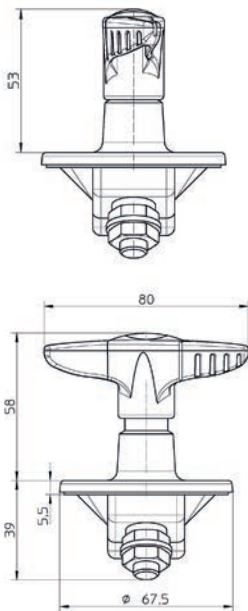
Termination: M10 copper studs  
Stud Torque:  $9 \pm 1.0$  Nm  
Contacts: Copper  
Hardware: Brass nuts and washers  
Construction: Reinforced plastic body with zinc plated die cast frame and thermoplastic handle.

Environmental: IP65  
Operating Temp:  $-40^{\circ}\text{C}$  to  $+85^{\circ}\text{C}$   
Dimensions: 80mmL x 80mmW x 97mmH  
Weight (nominal): 240 Grams

A robust device ideal for a multitude of heavy current switching applications in automotive, commercial and industrial vehicles. Constructed from quality materials and sealed to protect from harsh environmental conditions.

### SPARE PARTS

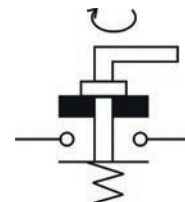
Handle: Order no. 580011



CLOSED

OPEN

Connection



Fixing

