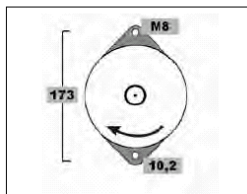
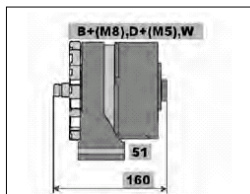
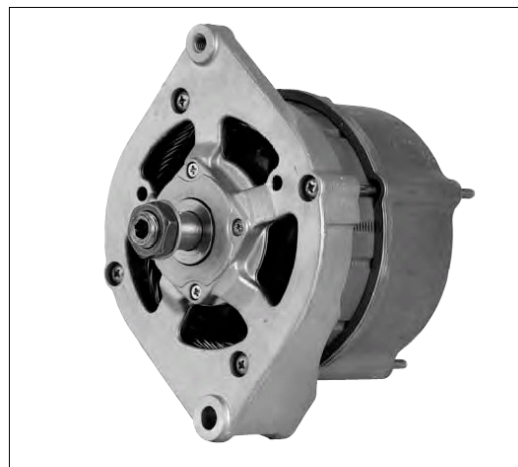


Bosch K1 Boss Mount Alternators

Bosch 12V 95A and 120A and 24V 55A alternators, with removable internal regulator and unrectified ac tacho output (terminal W). 50mm mounting boss. If external regulation is required, brush holder 101020 should be fitted. Perfectly suited to work with any of our smart external regulators from Ample Power or BALMAR. The fans and pulleys for the 12V alternators must be purchased separately. Specify high airflow fan 101003. Two groove pulley strongly recommended for 12V95A alternator, essential for 12V120 A alternator. Alternator speed must be at least 6000 r/min at normal engine operating speed, so pulley ratio crankshaft pulley diameter to alternator pulley diameter must be selected accordingly. Do not reduce alternator pulley size to below that of the standard BOSCH pulleys, as belt slip and/or glazing may ensue due to insufficient angle of wrap on the alternator pulley. The crankshaft pulley diameter should rather be increased. In engine compartments where high temperatures prevail, ducted cool air to the rear of the alternator should be provided.

Specifications:

- Nominal Voltage 12/24Vdc
- Charging voltage 14/28Vdc
- Max current 95/120/56A @
6000-12000 r/min
see curves on P2-P4
- Max speed 12000 r/min
- Excitation load 2W min (12V), 3W min (24V)



REGULATOR	1 197 311 032 / F 005 A10 107
RECTIFIER	F 005 A10 319
PULLEY	N/A
STATOR	1 125 045 073
BEARING S.R.E	6201
BEARING D.E	6303
ROTOR	6 033 GD2 065
REF NUMBER	0 120 484 011
NOTES	

Part Numbers

BOSCH Alternator K1
14V95A

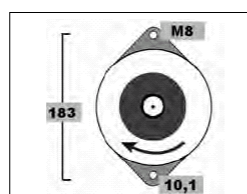
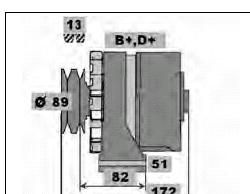
100008
(BOSCH BXU1296A)

BOSCH Alternator K1
14V120A

100002
(BOSCH BXU12121A)

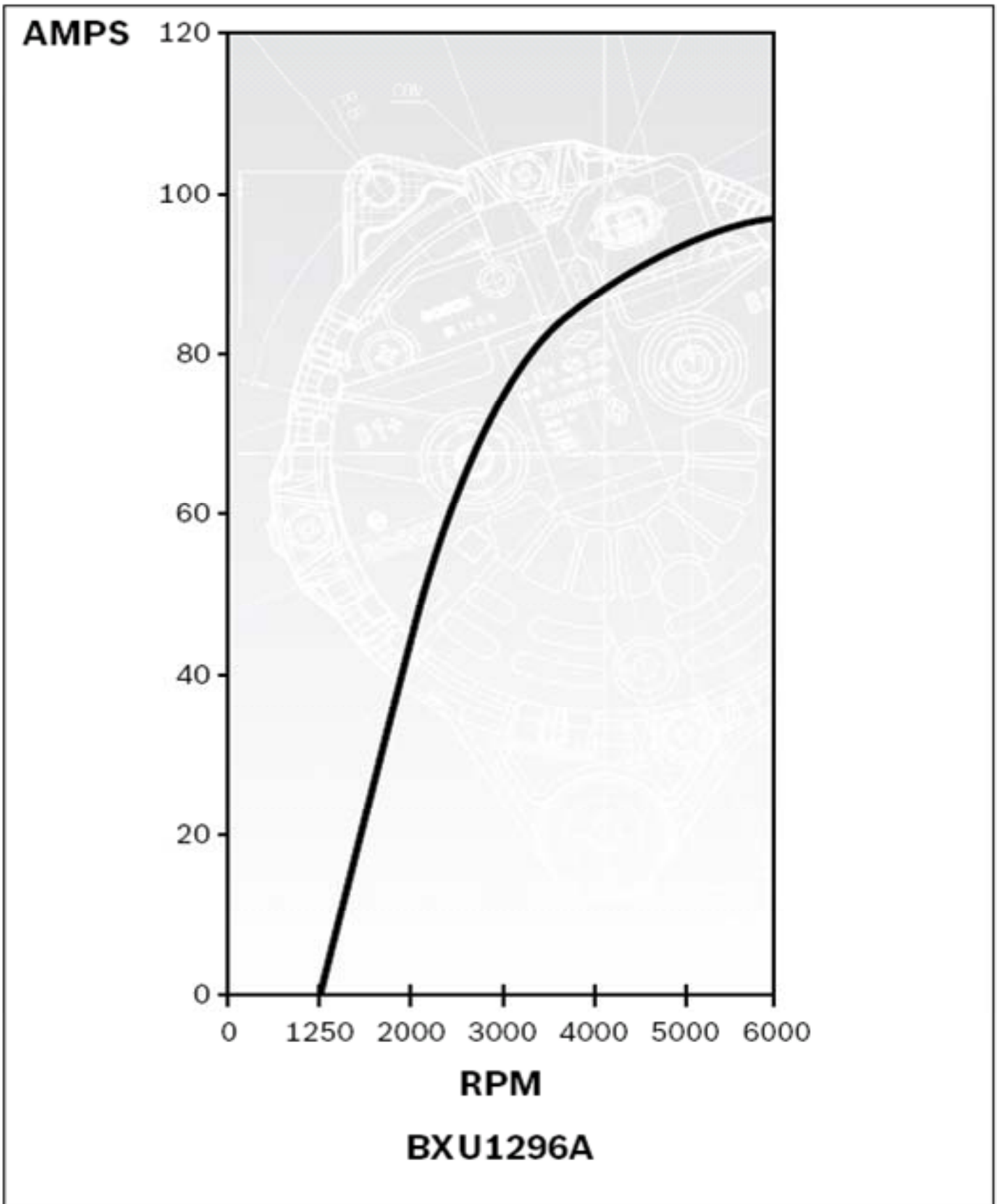
BOSCH Alternator K1
28V56A

100020
(BOSCH BXU2456A)

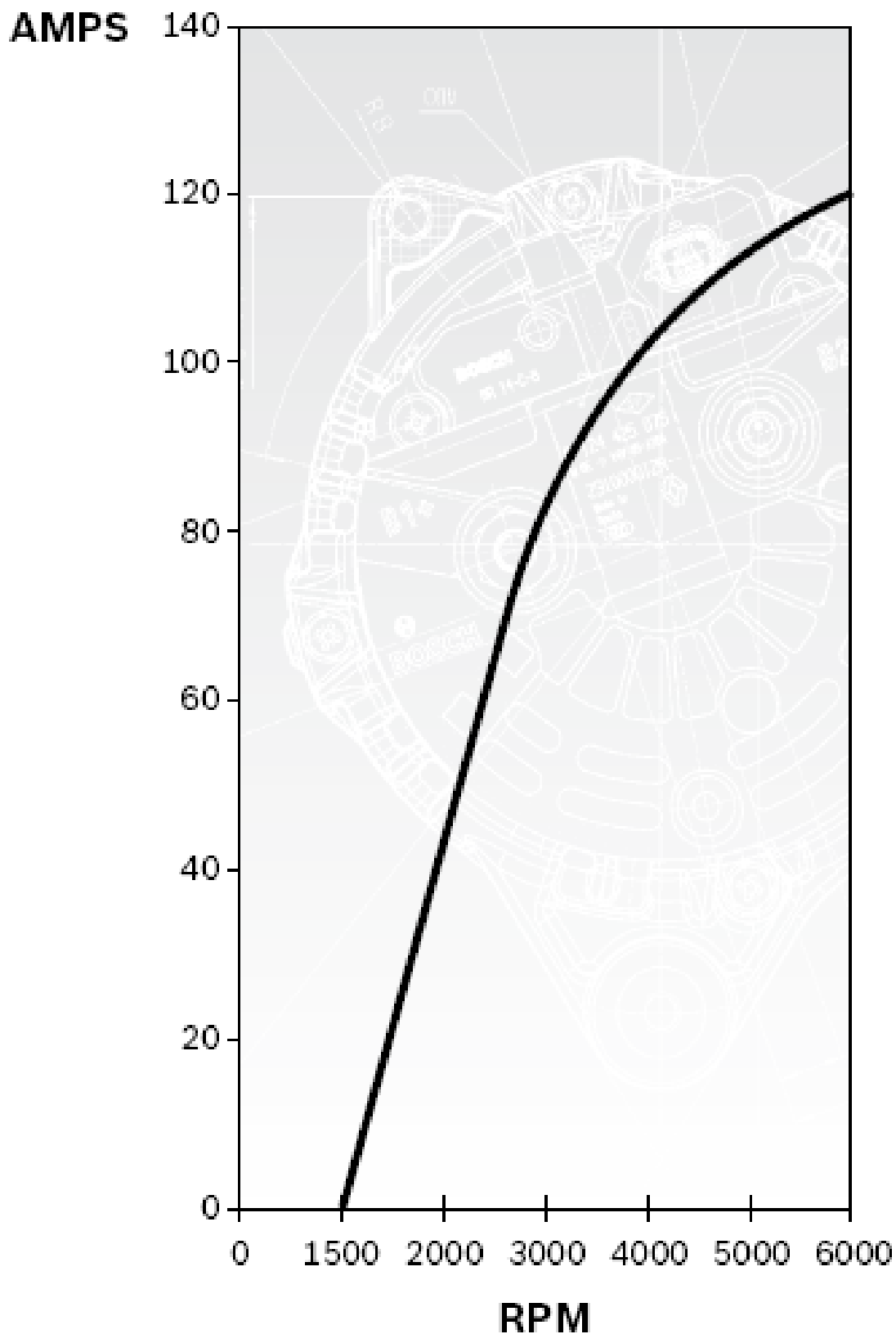


REGULATOR	1 197 311 307
RECTIFIER	9 121 067 397
PULLEY	N/A
STATOR	6 033 GD3 046
BEARING S.R.E	6 210
BEARING D.E	6303
ROTOR	6 033 GD2 065
REF NUMBER	0 120 484 040

Bosch K1 14V 95A



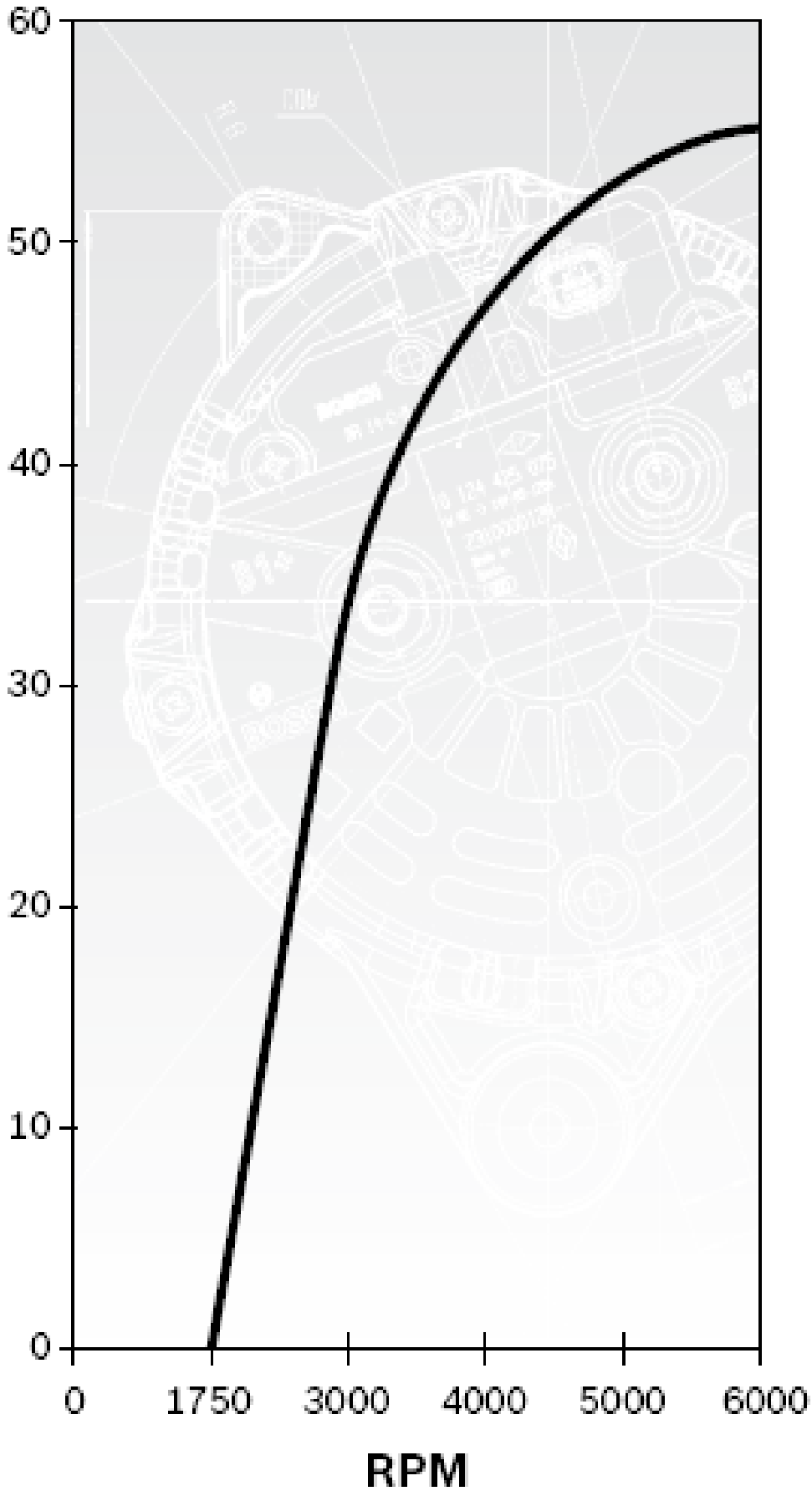
Bosch K1 14V 120A



BXU12121A

Bosch K1 28V 56A

AMPS



BXU2455A, BXU2456A