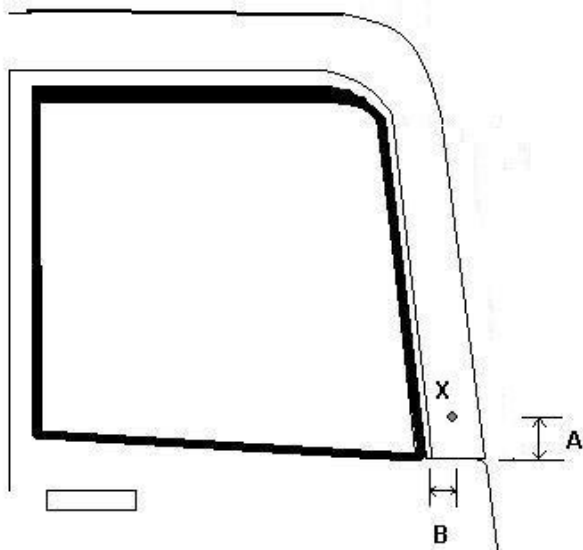


FITTING INSTRUCTIONS FIT1344

PLEASE READ INSTRUCTIONS COMPLETELY BEFORE INSTALLATION

FUSO SHOGUN STONGUARD

P/N SGP105B

	<p>Legend:</p> <p>‘X’ Mark for lowest pillar mount hole for stoneguard up from crease in cab.</p> <p>‘A’ = 45mm Measurement from crease in cab pillar front, to lowest stoneguard pillar mount hole.</p> <p>‘B’ = 30mm Measurement from crease in cab pillar front, to lowest stoneguard pillar mount hole.</p>
<p>Tools required:</p> <ul style="list-style-type: none">- Drill - 3mm, 6mm, 9mm, 12mm drill bits- Tec screws & bit (for temporary fastening)- Alan key for 6mm machine screw- Rivnut / Nutsert tool- Marker pen- CRC Soft Seal (or similar rust prevention)- Tape measure	

Installation Guide:

These instructions are intended as an accurate guide. All product positioning on the vehicle **should also be checked visually before final drilling & alignment.**

- 1) Fasten the centre support bracket to the inside of the stoneguard using.
2 x M6 button head bolt
5 x rivet
- 2) Assemble as shown in the following images.



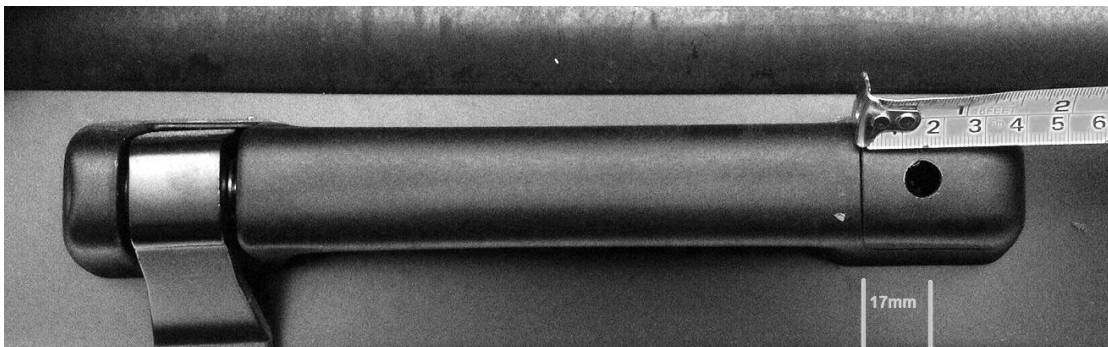


AUTOMOTIVE ACCESSORY
MANUFACTURE & DISTRIBUTION

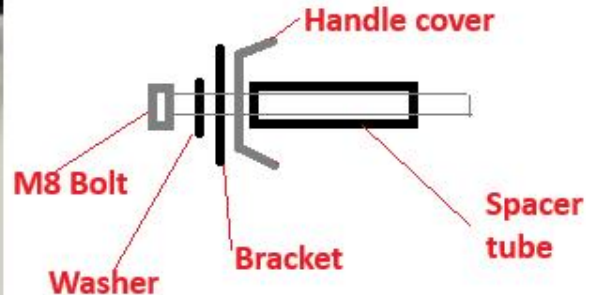
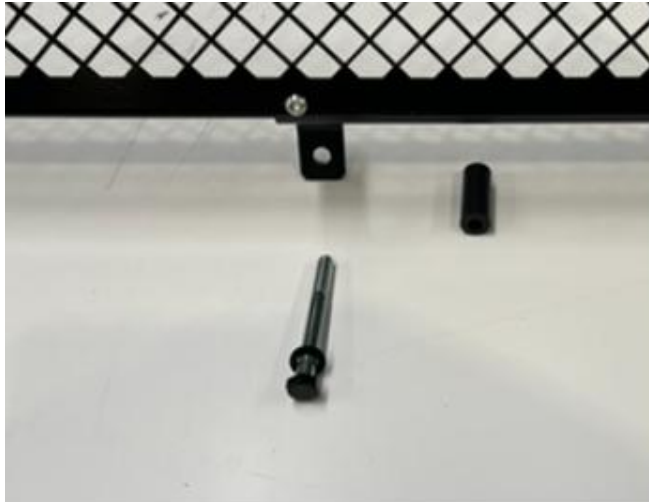
AIRPLEX INDUSTRIES LTD
21 Saleyards Road, Otahuhu, Auckland 1062, New Zealand
PO Box 11286, Ellerslie, Auckland 1542 New Zealand
PH +64 (9) 276-9826 Fax +64 (9) 276-9836
info@airplex.co.nz www.airplex.co.nz



- 3) Locate the removable black cap on the handles on the front of the cab, measure in 17mm from the edge adjoining the handle and drill a 5mm pilot hole. See image below.
- 4) Drill the hole out to 17mm. Drill carefully to avoid damaging the cover. If necessary, remove the small cover from truck and drill in vice on workbench.



- 5) Remove the one Phillips head screw beneath the cover that holds the handle to the cab. Discard.
- 6) Repeat for both handles.
- 7) Using the above table, mark a line on the cab pillar. The measurements supplied are for the LOWEST pillar mount hole in the end of the stoneguard
- 8) Test fit the stoneguard, bracket and spacer in the order shown below.



- 9)
- 10) Check the position on cab. You should be able to see the pre-marked 'X' through the lowest hole on the side of the stoneguard. When satisfied the marked position is correct, tilt the stoneguard forward to allow access to drill on the marked position with 3mm drill.
- 11) Offer the product back to the cab. Temporarily fix it to the cab with Tec Screws using the lowest holes drilled in the side of the product.
- 12) The side bracket should be parallel with the cab pillar. While visually checking alignment and level, fix all remaining points with tec screws.
- 13) Remove all tec screws. Remove the product from the truck
- 14) Drill all marked pillar holes with 9mm drill. Brush away all metal shavings.
- 15) Spray all drilled holes with CRC 'Soft Seal' or similar anti-rust protection.
- 16) Fit supplied rivnuts to all holes using an appropriate tool. Spray the rivnuts with CRC SoftSeal (or similar)
- 17) Refit stoneguard to the handles as before. Do not tighten yet.
- 18) Fasten with supplied button head machine screws and washers. Ensure each hole has a rubber/neoprene washer fitted between the stoneguard and the vehicle.
- 19) Firmly fasten and check all fittings.