

## AB Series - ABAC Pumps

## Belt Drive - 240 Volt

The McMillan AIRFORCE range provides a quality compressed air source at an affordable price from one of Australia's longest established compressor companies. AIRFORCE utilises ABAC Italian designed pumps in this powerful and reliable, two-cylinder, belt-driven compressor range intended for every day use. Suitable for light commercial applications, on-site trade work, and for the serious do-it-yourself (DIY) enthusiast.

### Features:

Fitted with filter / regulator.

50 L Compact 'stubby' tank fits into limited spaces.

- 750mm long without handle
- Requires no OH&S testing

Tanks to Australian Standard AS1210

Epoxy powder coated tanks.

Deep finned pump with fan forced cooling.

Cast iron cylinders.

F.A.D measured to Australian Standard AS4637.

2 Capacitor Electric motor with overload protection.

Adjustable cut in / cut out pressure range.

Light weight and portable.

Fully enclosed coated wire belt guard.

Removable handle and wheels.

Spare parts available.

Warranty: 3 years on pump, 5 years on tank, 1 year on motor & fittings



AB12

Product Code	Displacement CFM LPM	Free Air Delivery CFM LPM	Motor HP	Tank Litres	Power 240V	Max Pressure (p.s.i.)	Dimensions LxWxH (cm)	Mass (kg)
AB12	9.2 259	6.7 189	2.5	50	10 Amp	145	83 x 44 x 72	65
AB16	13.0 369	10.8 316	3.0	50	15 Amp	145	83 x 44 x 80	68
AB17	13.0 369	10.8 316	3.0	100	15 Amp	145	94 x 51 x 91	91



AB17



AB16

CFM x 28.3 = Litres per minute

Displacement & FAD calculated at 100psi.

Specifications/configuration may change at any time without notice.

## AF-Series – ABAC™ Pumps

## Belt Drive – 240 Volt

Built in Australia.

Features the world famous ABAC pump.

Built for professional applications,  
not just a price.

- ◆ ABAC pump.
- ◆ Rated to AS4637.
- ◆ Cast iron cylinder.
- ◆ TECO motor with overload protection.
- ◆ Supported by TECO National Service Network.
- ◆ Capacitor start/Capacitor run.
- ◆ Filter/regulator included.
- ◆ Condor German made pressure switch.
- ◆ Adjustable cut in/cut out differential.
- ◆ 60 Litre powder coated tank.
- ◆ Tank meets Australian Standard AS1210.
- ◆ Light weight for portability.
- ◆ Removable handle and axle.
- ◆ Fan forced cooling.
- ◆ Warranty.
  - 5 years on pump.
  - 5 years on tank.
  - 1 year on motor and fittings.
- ◆ Dual control option available for all models.\*\*



AF 12



AF 16/L

Dimensions (mm)	Length	Width	Height	Weight (kg)
<b>AF 12</b>	940	335	700	61
<b>AF 16</b>	940	335	740	66
<b>AF 16L</b>	1,450	400	840	105
<b>AF 430</b>	1,500	500	920	162

\* Dimensions exclude wheels and handle

Product Code	Displacement CFM	L/min	Free Air Delivery CFM	L/min	Motor Hp	Tank Litres	Power Supply	Pump Model	Max. Pressure	Cylinders
<b>AF 12</b>	11.7	331	8.4	238	2.2	60	10A	B2800	130psi	Twin
<b>AF 16</b>	16.4	464	12.3	348	3.0	60	15A	B3800	130psi	Twin
<b>AF 16/L</b>	16.4	464	12.3	348	3.0	125	15A	B3800	130psi	Twin
<b>AF 430</b>	17.3	489	15.1	430	5.0	155	20A	A49B	160psi	Twin

\*\* Dual control allows for constant run option if power is supplied by marginally sized generator or in an area with bad 240 volt power  
Refer to website for more information

CFM x 28.3 = Litres per minute  
Displacement & FAD calculated at 100psi.  
3.0Hp motors must only be used with 15A power outlet.  
Specifications/configuration may change at any time without notice.

E&OE V9.18

For improved air quality please consider our  
Refrigerated Dryers and Filters.

[www.mcmillanair.com.au](http://www.mcmillanair.com.au)

### C-Series™ - Cast Iron Pumps

### Belt Drive - 240 Volt

**Built in Australia.**

**Features heavy duty cast iron pumps in V-twin and W-triple configurations.**

Rated to AS4637.

Heavy duty close grain cast iron construction.

Featuring highly efficient reed valves.

Fully balanced flywheel with large cooling blades.

Guarding meets Occupational Health and Safety Standards.

Tank meets Australian Standard AS1210.

TECO motor with overload protection.

Supported by TECO National Service Network.

Capacitor start/Capacitor run.

Includes filter/regulator kit (C12 & C16).

Removable wheels & handle.

Full range of spare parts.

Warranty.

- 5 years on pump.
- 5 years on tank.
- 1 year on motor and fittings.

Dual control option available for all models.\*\*

**Includes Filter/Regulator**

Dimensions (mm)	Length	Width	Height	Weight (kg)
<b>C 12</b>	940	335	700	69
<b>C 16</b>	940	335	770	76
<b>C 16/L</b>	1,450	400	850	119
<b>C 22</b>	1,500	500	1,000	171

\* Dimensions exclude wheels and handle

Product Code	Displacement CFM	L/min	Free Air Delivery CFM	L/min	Motor Hp	Tank Litres	Power Supply	Max. Pressure	Pump Model	Cylinders
<b>C 12</b>	12.3	348	8.4	238	2.2	60	10 A	130psi	LB 30	V-Twin
<b>C 16</b>	16.0	453	11.6	328	3.0	60	15 A	130psi	LB 40	W-Triple
<b>C 16/L</b>	16.0	453	11.6	328	3.0	125	15 A	130psi	LB 40	W-Triple
<b>C 22</b>	23.6	668	16.3	461	5.0	155	20 A	130psi	LB 50	V-Twin

\* 240 volt High Pressure 2 stage - also available

\*\* Dual control allows for constant run option if power is supplied by marginally sized generator or in an area with bad 240 volt power

Refer to website for more information

CFM x 28.3 = Litres per minute

Displacement & FAD calculated at 100 psi.

3.0Hp motors must only be used with 15A power outlet.

Specifications/configuration may change at any time without notice.

E&OE V9.18



**C 12**



**C16**



For improved air quality please consider our Refrigerated Dryers and Filters.

[www.mcmillanair.com.au](http://www.mcmillanair.com.au)



## C-Series™ - Cast Iron Pumps

## Belt Drive - 240V - High Pressure

**Built in Australia.**

**2 stage “high pressure” pump.**

**For applications such as truck tyre fitting, bead blasting & inflation, manufacturing and much more.**

**Perfect for truck tyres**

- ◆ Rated to AS4637.
- ◆ 2 stage, up to 160psi for high pressure applications.
- ◆ Heavy duty “close grain” cast iron pump.
- ◆ Featuring highly efficient reed valves.
- ◆ Fully balanced flywheel with large cooling blades.
- ◆ TECO motor with overload protection.
- ◆ Supported by TECO National Service Network.
- ◆ Capacitor start/Capacitor run.
- ◆ Filter/regulator included.
- ◆ 2 x regulated outlets.
- ◆ 1 x unregulated high pressure tank outlet.
- ◆ Guarding meets Occupational Health & Safety Standards.
- ◆ Tank meets Australian Standard AS1210.
- ◆ Full range of spare parts available.
- ◆ Warranty.
  - 5 years on pump\*
  - 5 years on tank\*
  - 1 year on motor & fittings\*
- ◆ Dual control option available for all models.\*\*

**160psi High Pressure**



**C16-HP**



**C16L-HP**



Dimensions (mm)	Length	Width	Height	Weight (kg)
<b>C16-HP</b>	1,100	480	820	98
<b>C16L-HP</b>	1,450	400	900	117
<b>Petrol Model</b>				
<b>CP20-HP</b>	1,100	480	900	100

\* Dimensions exclude wheels and handle

Product Code	Displacement CFM	L/min	Free Air Delivery CFM	L/min	Motor Hp	Tank Litres	Power Supply	Max. Pressure	Cylinders
<b>C16-HP</b>	14.5	410	11.6	328	3.0	73	15A	160psi	W-Triple
<b>C16L-HP</b>	14.5	410	11.6	328	3.0	125	15A	160psi	W-Triple
<b>Petrol Model</b>									
<b>CP20-HP</b>	15.0	424	12.0	340	6.5	73	GX200	160psi	W-Triple

\* Applies to electric models only. Warranty for petrol model CP20-HP - 3 years on pump, 3 years on Honda engine, 5 years on tank.

\* Filter regulator not included on petrol models.

CFM x 28.3 = Litres per minute  
Displacement & FAD calculated at 100psi.  
Specifications/configuration may change at any time without notice.

Add Constant Run Option if used with bad power or a generator.



## Fu Sheng™ Industrial Series

## Belt Drive - 240 Volt & Petrol

**Fu Sheng™ Cast Iron heavy duty pumps made for industry since 1953.**

**V-Twin and W-Triple configurations.**

- ◆ Rated to AS4637.
- ◆ Fu Sheng heavy duty cast iron industrial pump.
- ◆ Precision machined and honed cast iron cylinders.
- ◆ Swedish steel disc valves give high lift and maximum efficiency.
- ◆ Balanced flywheel assures smooth operation.
- ◆ Individual cylinders, V-twin or W-triple, ensure increased cooling and reduced service costs.
- ◆ TECO Australia twin capacitor compressor motor supported by national service network.
- ◆ Filter/regulator supplied with MC12 & MC15.
- ◆ Tank meets Australian Standard AS1210
- ◆ Removable handle and wheels.
- ◆ Spare parts for all Fu Sheng models available.
- ◆ Warranty.
  - 5 years on pump.
  - 5 years on tank.
  - 1 year on motor & fittings.
- ◆ Constant Run Option available (MC12/15).\*\*



**MC 12**



**MC 15**

Dimensions (mm)	Length	Width	Height	Weight (kg)
<b>MC 12</b>	900	320	750	79
<b>MC 15</b>	1,090	340	710	93
<b>MC 30i</b>	1,800	440	820	201
<b>MCP 15</b>	1,120	400	800	98

\* Dimensions exclude wheels and handle



Product Code	Displacement CFM	L/min	Free Air Delivery CFM	L/min	Motor Hp	Power Supply	Max. Pressure	Tank Litres	Pump Model	Cylinders
<b>MC 12</b>	10.1	285	6.5	185	2.2	10A	145psi	60	VA65	V-Twin
<b>MC 15</b>	16.8	475	11.0	310	3.0	15A	145psi	73	TA65	W-Triple
<b>MC 30i</b>	33.6	950	22.0	620	2 x 3.0	2 x 15A	145psi	190	2 x TA65	2 x W-Triple
<b>Petrol Model</b>										
<b>MCP 15</b>	17.3	490	11.3	320	6.5	GX200	145psi	60	TA65	W-Triple

\* MCP models use Honda GX200 petrol motor, auto idle & auto unload

\*\* Add Constant Run Option if used with bad power or a generator.

\*\*\* Filter regulator not included on petrol models.

CFM x 28.3 = Litres per minute

Displacement & FAD calculated at 100psi.

3.0Hp motors must only be used with 15A power outlet.

Specifications/configuration may change at any time without notice.

E&OE V10.19

[www.mcmillanair.com.au](http://www.mcmillanair.com.au)

**Built in Australia.**

**20A single phase electric motor.**

**Features heavy duty, cast-iron pumps, or ABAC high pressure pump.**

- ◆ Rated to AS4637.
- ◆ 5Hp Totally Enclosed Fan Cooled motor. (C22/AF430)
- ◆ Supported by National Service Network.
- ◆ Electromagnetic starter with overload. (C22/AF430)
- ◆ Pressure switch controlled\*.
- ◆ Fitted with Italian MAXI filter regulator. (C22/AF430)
- ◆ Featuring highly efficient reed valves.
- ◆ Fully balanced flywheel with large cooling blades.
- ◆ ½" BSP tank outlet.
- ◆ Guarding meets Australian Occupational Health & Safety Standards.
- ◆ AF430 fitted with high pressure ABAC pump.
- ◆ C22 fitted with heavy duty cast-iron pump.
- ◆ MC30i fitted with 2x Fu Sheng cast iron pumps.
- ◆ Forklift feet.
- ◆ Can be wired for 480 V (Rural SWER system).\*\*
- ◆ Tank meets Australian Standard AS1210.
- ◆ Full range of spare parts available.
- ◆ Warranty.

- 5 years on pump.
- 5 years on tank.
- 1 year on motor & fittings.

**240V**



**C22**



**AF430**



**MC30i**

Dimensions (mm)	Length	Width	Height	Weight (kg)
<b>C22</b>	1,500	500	1,000	171
<b>AF430</b>	1,500	500	1,000	169
<b>MC30i</b>	1,800	440	820	201

Product Code	Displacement CFM	L/min	Free Air Delivery CFM	L/min	Motor Hp	Tank Litres	Power Supply	Pump Model	Cylinders / Stages
<b>C22</b>	23.6	668	16.3	461	5.0	155	20A	LB 50	2 / 1
<b>AF430</b>	17.3	489	15.1	430	5.0	155	20A	A49B	2 / 2
<b>MC30i</b>	33.6	950	22.0	620	2 x 3.0	190	2 x 15A	2 x TA65	6 / 1

\*\* See website blog for details, TECO 4Hp SWER motor

\*Also available with Constant Run Option



CFM x 28.3 - Litres per minute  
 Displacement & FAD calculated at 100psi.  
 Specifications/configuration may change at any time without notice.  
 E&OE

For improved air quality please consider our  
 Refrigerated Dryers and Filters.

**Visit [www.mcmillanair.com.au](http://www.mcmillanair.com.au) to find your local dealer**

## UTE Pack Compressors

## Petrol & Electric

**Built in Australia.**

**Featuring the world famous ABAC pump, as well as cast iron pump options, coupled with Honda petrol engines gives us a range of UTE style compressors that provides the quality & reliability required in this portable market.**

- ◆ Rated to AS4637.
- ◆ Cast iron cylinder and crankshaft.
- ◆ Two stage, 160psi on high pressure models.
- ◆ Honda petrol engine.
- ◆ Oil alert engine shut down.
- ◆ Auto idle control.
  - increase fuel efficiency.
  - increase in compressor life.
  - reduction in noise and temperature.
  - cooler pump operation.
- ◆ Tanks meet Australian Standard AS1210.
- ◆ Honda & TECO National Service Network.
- ◆ Warranty.
  - 3 years on pump, tank & fittings.  
excluding pump to suit AFP70 - 1 year
  - 3 years on Honda engine.
  - 1 year on TECO electric motor.
- ◆ NEW stationary UTE mount model (CP23-S) is also available with ABAC upright pump option.



**CP 23-S**



**AFP 49-UTE**

Dimensions (mm)	Length	Width	Height	Weight (kg)
<b>AFP 38-UTE</b>	800	720	520	75
<b>AFP 49-UTE</b>	1,150	730	550	102
<b>AFP 70-UTE</b>	1,030	900	760	148
<b>CP 23-S</b>	950	400	800	91
<b>AF 12-UTE</b>	780	730	460	70



Product Code	Displacement CFM	L/min	Free Air Delivery CFM	L/min	Motor Hp	Tank Litres	Pump Model	Cylinders / Stages	Max. Pressure
<b>AFP 38-UTE</b>	18.3	518	14.1	400	6.5	50	B3800	2/1 Stage	130psi
<b>AFP 49-UTE</b>	18.0	509	14.8	419	6.5	73	B4900	2/2 Stage	160psi
<b>AFP 70-UTE</b>	42.7	1,208	34.2	968	13.0	73	B7000	2/2 Stage	160psi
<b>CP 23-S</b>	22.5	636	15.2	430	6.5	60	LB40	3/1 Stage	130psi
<b>AF 12-UTE</b>	11.7	331	8.4	238	2.2/240V	50	B2800	2/1 Stage	130psi

\* Heavy Duty Anti Vibration Pads included with stationary units.

\* Filter regulator not included.

CFM x 28.3 = Litres per minute  
 B2800 & B3800 - Single stage pump.  
 Specifications/configuration may change at any time without notice.

For improved air quality please consider our Refrigerated Dryers and Filters.



## AFP-Series – ABAC™ Pumps

## Honda Petrol

**Built in Australia.**

**Features the world famous ABAC pump and Honda petrol engine with auto idle control. Widely used by the professional in the tyre service trade and agricultural industry, where high pressure may be required.**

- ◆ Rated to AS4637.
- ◆ ABAC pump, made in Italy.
- ◆ Cast iron cylinder and crankshaft.
- ◆ Two stage 160psi if required.
- ◆ Intercooler and aftercooler for cool dry air.
- ◆ Honda petrol engine.
- ◆ Oil alert engine shut down.
- ◆ Auto idle control.
  - increase fuel efficiency.
  - increase in compressor life.
  - reduction in noise and temperature.
  - cooler pump operation.
- ◆ Tank meets Australian Standard AS1210.
- ◆ Forklift feet on stationary units.
- ◆ Honda National Service Network.
- ◆ Warranty.
  - 3 years on pump
  - 3 years on Honda engine.
  - 5 years on tank



AFP 38



AFP 59



Dimensions (mm)	Length	Width	Height	Weight (kg)
AFP 38	940	355	820	75
AFP 49	1,100	480	850	101
AFP 49/L	1,450	470	900	114
AFP 59	1,450	470	970	155
AFP 60	1,450	470	1,000	171
AFP 70	1,450	520	1,150	208

\* Dimensions exclude wheels and handle

Product Code	Displacement CFM	L/min	Free Air Delivery CFM	L/min	Motor Hp	Honda Motor	Tank Litres	Pump Model	Cylinders / Stages	Max. Pressure
AFP 38	18.3	518	14.1	400	6.5	GX200	60	B3800	2/1 Stage	130psi
AFP 49	18.0	509	14.8	419	6.5	GX200	73	A49B	2/2 Stage	160psi
AFP 49/L	18.0	509	14.8	419	6.5	GX200	155	A49B	2/2 Stage	160psi
AFP 59	23.0	651	18.4	521	9.0	GX270	155	B5900	2/2 Stage	160psi
AFP 60	29.2	826	23.3	659	9.0	GX270	155	B6000	2/2 Stage	160psi
AFP 70	42.7	1,208	34.2	968	13.0	GX390	155	B7000	2/2 Stage	160psi

\* Electric start option available (battery, battery bracket and leads not included)

\* Heavy Duty Anti Vibration Pads available for stationary units.

\* Filter regulator not included.

CFM x 28.3 = Litres per minute

B3800 - Single stage pump.

Specifications/configuration may change at any time without notice.

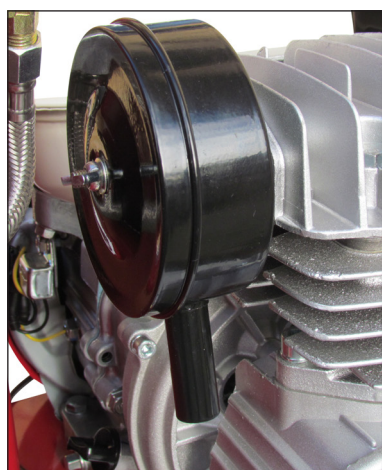
For improved air quality please consider our Refrigerated Dryers and Filters.

## AFP Series - Twin Tank

## Petrol

**6.5hp 260L/min (9.2 cfm) petrol compressor with 16L tank capacity  
900 kpa (130 psi) maximum pressure  
with idle control.**

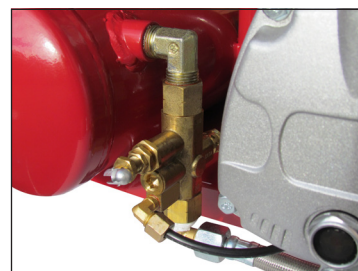
- ◆ Compact Twin Tank design.
- ◆ F.A.D. as per AS4637
- ◆ Highly efficient reed valves.
- ◆ Honda petrol engine with Honda National Service Network.
- ◆ Conrader (USA) Auto Idle Control.
  - increase fuel efficiency.
  - increase in compressor life.
  - reduction in noise and temperature.
  - cooler pump operation.
- ◆ Anti vibration rubber pads.
- ◆ Warranty
  - 6 months on pump, tank & fittings.
  - 3 years on Honda engine.



Metal Air Inlet Filter



Control Panel



Conrader Control Valve (USA)

Dimensions (mm)	Length	Width	Height	Weight (kg)
AFP9T	550	540	630	40

Product Code	Displacement CFM	L/min	Free Air Delivery CFM	L/min	Motor Hp	Honda Motor	Tank Litres	Maximum Pressure
AFP9T	9.2	260	5.1	144	6.5	GX200	16	130 psi

CFM x 28.3 = Litres per minute

Displacement & FAD calculated at 100psi.

Specifications/configuration may change at any time without notice.



## CP Series – Cast Iron Series

**Built in Australia.**

**Features heavy duty cast iron pumps in V-twin and W-triple configurations, auto idle control and Honda petrol engine.**

- ◆ Rated to AS4637.
- ◆ Heavy duty “close grain” cast iron construction.
- ◆ Featuring highly efficient reed valves.
- ◆ Honda petrol engine.
- ◆ Honda National Service Network.
- ◆ Oil alert engine shut down.
- ◆ Auto idle control.
  - increases fuel efficiency.
  - increase in compressor life.
  - reduction in noise and temperature.
  - cooler pump operation.
- ◆ 10” pneumatic wheels - CP19/23
- ◆ Anti vibration rubber pads with stationary models.
- ◆ Removable axle and handle.
- ◆ Heavy duty base plate.
- ◆ Full range of spare parts.
- ◆ Warranty.
  - 3 years on pump.
  - 3 years on Honda engine.
  - 5 years on tank.

Dimensions (mm)	Length	Width	Height	Weight (kg)
CP19	940	355	850	82
CP23	940	355	850	85
CP55W	1,100	500	900	116
CP55	1,450	520	1,000	170
CP80	1,450	470	1,000	185
CP20-HP	480	1100	900	100

\* Dimensions exclude wheels and handle

Product Code	Displacement CFM	L/min	Free Air Delivery CFM	L/min	Motor Hp	Honda Motor	Tank Litres	Pump Model	Cylinders
CP19	18.1	512	12.3	348	6.5	GX200	60	LB30B	V-Twin
CP23	22.5	636	15.2	430	6.5	GX200	60	LB40	W-Triple
CP55W	25.1	710	19.8	560	9.0	GX270	73	LB50	V-Twin
CP55	25.1	710	19.8	560	9.0	GX270	155	LB50	V-Twin
CP80	37.1	1,050	29.0	821	9.0	GX270	155	LB75	W-Triple
CP20-HP*	15.0	424	12.0	340	6.5	GX200	73	LT40	W-Triple (H.P.)

\* Electric start option available (battery, battery bracket and leads optional extra)

\* CP20-HP is 2-Stage/High Pressure/160 psi

\* Fu Sheng petrol models available

## Honda Petrol



CP80



CP23



CFM x 28.3 = Litres per minute  
 Displacement & FAD calculated at 100psi.  
 Specifications/configuration may change at any time without notice.

For improved air quality please consider our Refrigerated Dryers and Filters.



## C-Series™ - Cast Iron Pumps

## Honda Petrol

**Built in Australia.**

**Features heavy duty cast iron pump.**

**Honda petrol engine with auto idle control.**

- ◆ High capacity portable petrol compressor.
- ◆ Rated to AS4637
- ◆ Heavy duty “close grain” cast iron pump.
- ◆ Featuring highly efficient reed valves.
- ◆ Honda petrol engine.
- ◆ Oil alert engine shut down.
- ◆ Honda National Service Network.
- ◆ Auto idle control;
  - Increases fuel efficiency.
  - Increases compressor life.
  - Reduces noise level.
  - Cooler pump operation.
- ◆ 10” pneumatic wheels.
- ◆ Tank meets Australian Standard AS1210.
- ◆ Full range of spare parts available.
- ◆ Warranty.
  - 3 years on pump.
  - 3 years on Honda engine.
  - 5 years on tank.
- ◆ 2 Stage, 160psi high pressure version available on request.

**25 CFM**



CP55W

Dimensions (mm)	Length	Width	Height	Weight (kg)
CP55W	1,100	500	900	115

\* Dimensions exclude wheels and handle



Product Code	Displacement CFM	L/min	Free Air Delivery CFM	L/min	Motor Hp	Tank Litres	Honda Motor	Max. Pressure	Pump Model	Cylinders
CP55W	25.1	710	19.8	560	9.0	73	GX270	130psi	LB 50	V-Twin

CFM x 28.3 = Litres per minute

Displacement & FAD calculated at 100psi.

Specifications/configuration may change at any time without notice.

## MCD-Series - Fu Sheng Pumps

## Yanmar Diesel

Our MCD range of diesel powered air compressors use the Fu Sheng pump driven by Yanmar air cooled, direct injection diesel engine with electric start. These units are well suited to the tyre service trade, agricultural industry as well as mine sites, oil refineries and other hazardous locations.

- ◆ Rated to AS4637.
- ◆ Fu Sheng heavy duty air cooled pump.
- ◆ Low pump speed, full cast iron construction.
- ◆ Yanmar air cooled direct injection diesel engine.
- ◆ Electric start fitted to engines.
- ◆ Auto idle throttle control.
- ◆ Easy start unloading valve.
- ◆ Fully compliant with Australian Safety Standards and Regulations.
- ◆ Warranty.
  - 3 years on pump.
  - 1 year on Yanmar engine.
  - 3 year on tank.



MCD 20



MCD 30



MCD 40



Dimensions (mm)	Length	Width	Height	Weight (kg)
MCD 20	1,080	410	880	122
MCD 30	1,480	480	990	209
MCD 40	1,490	500	1,040	290

Product Code	Displacement CFM	L/min	Free Air Delivery CFM	L/min	Engine Hp	Electric Start	Tank Litres	Max. Pressure	Pump Model
MCD 20	17.3	489	11.3	319	4.7	Yes	73	145psi	TA-65
MCD 30	31.0	877	24.0	678	6.7	Yes	125	145psi	TA-80
MCD 40	39.1	1,106	29.2	828	10.0	Yes	155	145psi	VA-100

12 Volt battery and cables are not included.  
Displacement & FAD calculated at 100psi.  
Specifications/configuration may change without notice.

For improved air quality please consider our Refrigerated Dryers and Filters.

## C-Series – Cast Iron Series

## Stationary – 415 Volt

**Built in Australia.**

**This industrial range of air compressors use air receivers to the Australian Standard AS1210 as required by the Department of Occupational Health and Safety.**

- ◆ Rated to AS4637.
- ◆ Heavy duty cast iron pumps.
- ◆ V-Twin or W-Triple cylinder configuration.
- ◆ Fully balanced flywheel with large cooling blades.
- ◆ Low speed, single stage pump.
- ◆ Auto stop/start pressure switch.
- ◆ TECO totally enclosed fan cooled motor.
- ◆ Supported by TECO National Service Network.
- ◆ Forklift feet.
- ◆ Warranty.
  - 2 years on pump.
  - 5 years on tank.
  - 1 year on motor.

Dimensions (mm)	Length	Width	Height	Weight (kg)
C 40	1,450	450	850	143
C 50	1,500	520	1,000	185
C 75	1,500	540	1,450	215
C 100	1,500	590	1,160	326



C 50



C 75

Product Code	Displacement CFM	L/min	Free Air Delivery CFM	L/min	Motor Hp	Tank Litres	Max. Pressure	Pump Model	Cylinders
C 40	19.6	555	13.3	376	4.0	125	130psi	LB 40	W-Triple
C 50	23.6	668	16.3	461	5.5	155	130psi	LB 50	V-Twin
C 75	33.0	934	21.5	609	7.5	155	130psi	LB 75	W-Triple
C 100	41.0	1,160	29.0	821	10.0	250	130psi	UB 75B	V-Twin

\* Heavy Duty Anti Vibration Pads available for stationary units.



CFM x 28.3 = Litres per minute  
 Displacement & FAD calculated at 100psi.  
 Specifications/configuration may change at any time without notice.

For improved air quality please consider our Refrigerated Dryers and Filters.



### AB Series – ABAC™ Pump

### Stationary – 415 Volt

Our Italian made range of stationary air compressors are available from 5.5 to 10Hp, using pumps from the world's largest air compressor manufacturer, ABAC SpA, offering reliable, affordable units with full after sales service.

Air compressor tanks are manufactured to Australian Standard AS1210. ABAC two stage pumps are far more efficient than single stage pumps where required pressure is 100psi and above.

- ◆ Rated to AS4637.
- ◆ Efficient two stage, Italian made ABAC pump.
- ◆ Cast iron cylinder and crankshaft.
- ◆ Intercooler & aftercooler for cooler, dryer air.
- ◆ Condor auto stop/start pressure switch.
- ◆ Guard design for fan forced cooling.
- ◆ Less power usage - cheaper to run.
- ◆ Motor overload protection.
- ◆ Full range of spare parts available.
- ◆ Supplied in wooden case on pallet base.
- ◆ Warranty.
  - 2 years on pump.
  - 5 years on tank.
  - 1 year on motor and fittings.
- ◆ 160psi high pressure models available: (refer to AF Series)
- ◆ WEG motors or equivalent rated to MEPS2



AB 60

Dimensions (mm)	Length	Width	Height	Weight (kg)
AB 59	1,300	500	920	160
AB 60	1,300	500	940	180
AB 70	1,450	550	1,140	230



Product Code	Displacement CFM	L/min	Free Air Delivery CFM	L/min	Motor Hp	Tank Litres	Pump Model	Cylinders / Stages	Maximum Pressure
AB 59	23.0	651	18.4	521	5.5	150	B5900	2/2 Stage	142psi
AB 60	29.2	826	23.3	659	7.5	150	B6000	2/2 Stage	142psi
AB 70	42.7	1,208	34.2	968	10.0	200	B7000	2/2 Stage	142psi

CFM x 28.3 = Litres per minute  
 Displacement & FAD calculated at 100psi.  
 Specifications/configuration may change at any time without notice.

For improved air quality please consider our Refrigerated Dryers and Filters.

## AF Series – ABAC™ Pumps

## Stationary – 415 Volt

Our industrial range of stationary air compressors available from 4 to 10Hp using pumps from the world's largest air compressor manufacturer, ABAC SpA, offering reliable, affordable units with full after sales service. Air compressor tanks made to Australian Standard AS1210. ABAC two stage pumps are far more efficient than single stage pumps where required pressure is 100psi and above.

- ◆ Rated to AS4637.
- ◆ Efficient two stage, Italian made ABAC pump.
- ◆ Cast iron cylinder and crankshaft.
- ◆ Two stage, 160psi for high pressure applications.
- ◆ Intercooler & aftercooler for cooler, drier air.
- ◆ Condor auto stop/start pressure switch.
- ◆ Guard design for fan forced cooling.
- ◆ Less power usage - cheaper to run.
- ◆ Motor overload protection.
- ◆ Motors rated to MEPS2.
- ◆ Full range of spare parts available.
- ◆ Warranty.
  - 2 years on pump.
  - 5 years on tank.
  - 1 year on motor and fittings.

**160psi High Pressure**



AF 70

Dimensions (mm)	Length	Width	Height	Weight (kg)
AF 49	1,450	450	890	135
AF 59	1,500	430	930	176
AF 60	1,500	430	960	209
AF 60/L	1,500	620	1,095	316
AF 70	1,500	620	1,139	329

Product Code	Displacement CFM	L/min	Free Air Delivery CFM	L/min	Motor Hp	Tank Litres	Pump Model	Cylinders / Stages	Max. Pressure
AF 49	18.0	509	14.8	419	4.0	125	B4900	2/2 Stage	160psi
AF 59	23.0	651	18.4	521	5.5	155	B5900	2/2 Stage	160psi
AF 60	29.2	826	23.3	659	7.5	155	B6000	2/2 Stage	160psi
AF 60/L	29.2	826	23.3	659	7.5	250	B6000	2/2 Stage	160psi
AF 70	42.7	1,208	34.2	968	10.0	250	B7000	2/2 Stage	160psi



CFM x 28.3 = Litres per minute  
 Displacement & FAD calculated at 100psi.  
 Specifications/configuration may change at any time without notice.

For improved air quality please consider our Refrigerated Dryers and Filters.



## Fu Sheng™ Industrial Series

## Stationary - 415 Volt

**Fu Sheng™ cast iron heavy duty pumps made for industry since 1953. Low pump speed, single stage for reliability, outstanding performance and long life.**

**Distributed by McMillan for over 30 years**

- ◆ Rated to AS4637.
- ◆ Fu Sheng heavy duty cast iron industrial pump.
- ◆ Precision machined and honed cast iron cylinders.
- ◆ Swedish steel disc valves give high lift and maximum efficiency.
- ◆ Individual cylinders, V-Twin or W-Triple, ensure increased cooling and reduced service costs.
- ◆ Balanced flywheel assures smooth operation.
- ◆ TECO MEPS 2 totally enclosed fan cooled motors supported by national service network.
- ◆ Motor overload protection.
- ◆ Condor pressure switch.
- ◆ Tank meets Australian Standard AS1210.
- ◆ Forklift feet.
- ◆ Spare parts for all Fu Sheng models available.
- ◆ Warranty.
  - 2 years on pump.
  - 5 years on tank.
  - 1 year on motor and fittings.



MCS 45



MCS 52



Dimensions (mm)	Length	Width	Height	Weight (kg)
MCS27	1,490	490	1,000	208
MCS45	1,550	600	1,130	324
MCS52	1,880	680	1,180	382
MCS82	1,930	730	1,360	518

Product Code	Displacement CFM	L/min	Free Air Delivery CFM	L/min	Motor Hp	Tank Litres	Max. Pressure	Pump Model	Cylinders
MCS27	27.6	781	21.3	603	5.5	155	145psi	TA 80	W-Triple
MCS45	41.0	1,160	31.5	891	10.0	250	145psi	VA 100	V-Twin
MCS52	52.3	1,480	42.5	1,202	10.0	300	145psi	TA 100	W-Triple
MCS82	73.7	2,085	61.1	1,729	15.0	400	145psi	TA 120	V-Triple

\* MCS82 has star/delta starting. All other models are DOL. All motors 415 volt, 3-phase.

CFM x 28.3 = Litres per minute  
 Displacement & FAD calculated at 100psi.  
 Specifications/configuration may change at any time without notice.

For improved air quality please consider our  
 Refrigerated Dryers and Filters.



# McMILLAN

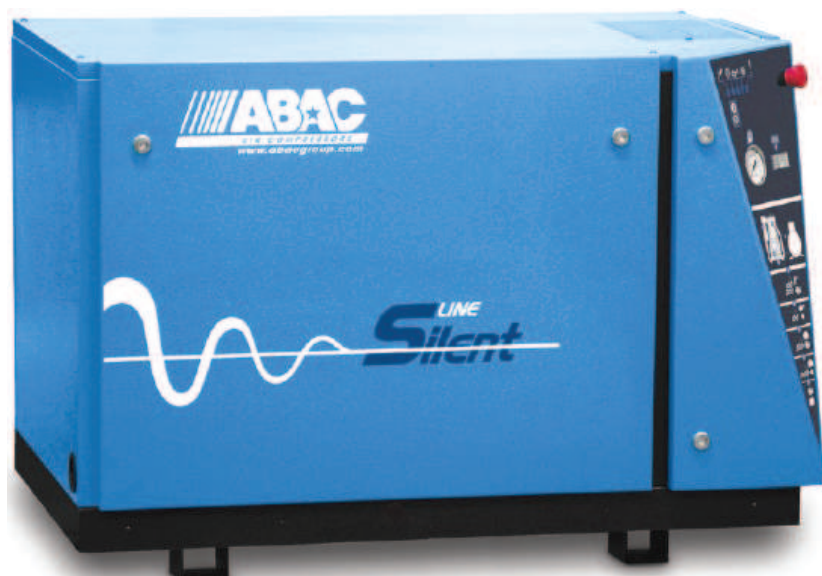
## Air Compressors *Since 1954*

### ABAC Low Noise Compressor

McMillan Air Compressors offers these quality, sound dampened air compressor packages for workshop and small industrial applications. ABAC is a trusted Italian compressor company established in 1980 and is owned by Atlas Copco, the world market leader in air compressors. To date ABAC have produced more than 15 million compressors while making their name as a manufacturer of superior designed compressors that last. So if reliability is essential, an ABAC compressor should be the backbone of your air system.

Quality Italian built package.  
 Removeable panels for easy servicing.  
 Low pump speed for low noise and long life.  
 Lower ongoing maintenance costs than equivalent rotary screw compressors.

Sound dampened with acoustic foam lining.  
 Available in 415V with a smaller 240V option.  
 12 Month warranty.  
 Powder coated steel cabinet.  
 Air dryers and filters are optional extras.



Low Noise Air Compressor



Optional Air Dryer and  
 Inline Filtration

Product Code	Displacement CFM	L/min	Free Air Delivery CFM	L/min	Motor kW	HP	Maximum working pressure	Noise level dB(A)	Compressor Dimensions	Weight	Voltage	Dryer & filters (optional)**	Air receiver (optional)
LN300A *	11.2	317	8.4	238	2.2	3.0	10 bar	62	780x470x960	87kg	230V	Cool21, G45, C45	T60V
LN550A	22.9	648	18.3	518	4.0	5.5	11 bar	67	945x760x960	177kg	415V	Cool36, G45, C45	T150V
LN750A	28.9	818	23.0	651	5.5	7.5	12 bar	69	1270x780x890	234kg	415V	Cool36, G45, C45	T300V
LN1000A	42.4	1200	34.0	962	7.5	10.0	12 bar	69	1270x780x890	253kg	415V	Cool72, G90, C90	T300V

\* This is a 15 Amp model mounted on 24L air receiver inside the cabinet.  
 415V models do not include an air receiver.

\*\* For more detailed information on ABAC air dryer please refer to the McMillan dryer brochure.



CFM x 28.3 Litres per minute  
 Displacement & FAD calculated at 100 psi  
 Specifications/configuration may change at any time without notice.

E&OE



[www.mcmillanair.com.au](http://www.mcmillanair.com.au)

## Compressed Air Treatment Products

## ABAC Refrigerated Air Dryers

### Clean, dry air and why you need it.

Compressed air leaving the air compressor is seldom of a quality suitable for the intended use.

This is due to several factors:

Atmospheric air, especially in an industrial environment, contains particulate matter, moisture and hydrocarbons, which are not removed by the compressor's inlet filter.

The air compressor itself will contribute contaminants in the form of wear particles, compressor oil carry-over, and rust from the tank.

Cooling, after the air is compressed, results in condensation. This moisture has a harmful effect on pneumatic equipment and manufacturing processes.

So by fitting a refrigerated air dryer and filters to the air system, the correct grade of air quality is supplied to equipment and processes downstream of the compressor and the result is improved production efficiency and product quality. This will save money by reducing reworking and the downtime of equipment.



### Dryer features:

- Remove water contamination from your air system
- Timer drain ensures effective purging of condensate
- Simple low maintenance technology
- Easy to install
- Compact design does not require much space
- Low power consumption
- Dew point indicator to check operation
- Increased final product quality
- Increased productivity
- 12 month warranty



### Filter features:

- Unique head design reduces pressure drop
- Ribbed bowl allows firm grip for dismantling, to access the element
- Corrosion free housing due to anodised die cast aluminium
- Sight glass for monitoring of condensate
- High performance auto drains
- A venting hole will give an audible alarm if filter is dismantled under pressure

### Dryer Selection:

Dryer Model	Drying Capacity CFM	Drying Capacity L/min	Connection	Pre filter	Post filter	Dryer dimensions	Weight	Suits air compressor:
Cool 21	12.4	350	1/2" BSP	G45	C45	233 x 559 x 561	19kg	up to 3HP
Cool 36	21.2	600	1/2" BSP	G45	C45	233 x 559 x 561	19kg	4HP to 7.5HP
Cool 72	42.4	1,200	1/2" BSP	G90	C90	233 x 559 x 561	20kg	7.5HP to 10HP
Cool 110	64.4	1,825	1/2" BSP	G125	C125	233 x 559 x 561	25kg	15HP

Note: Treatment of compressed air is regemented by recognised international standards. ISO 8573.1 describes levels of air purity in detail, but to keep things simple we have made the assumption that most commercial applications would require dry air with final filtration of 0.01 micron (particle and oil removal) and the 0.1 micron pre filter has been selected to prolong the life of the dryer and post filter element.

Air compressor matching is based on McMillan high capacity tank mounted air compressors.

Made in Italy. All dryer models above are suitable for 240V/1/50 power supply and are fully charged with R134a compliant refrigerant gas.

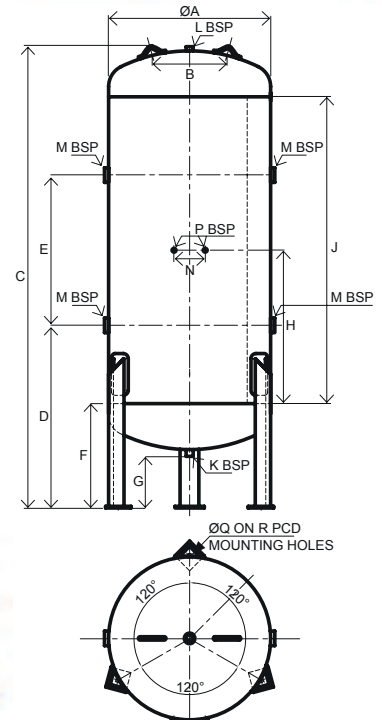
## Vertical Air Receivers

McMillan offers a popular range of vertical air receivers that are specifically designed for use in industrial compressed air systems. These premium quality pressure vessels are exclusively made in our affiliated factory that is ISO 9001 compliant.

Save time and money when purchasing a vertical air receiver by selecting from our extensive stock of competitively priced pressure vessels that are available for immediate delivery anywhere in Australia.



- ◆ Design safety verified in accordance with Australian Standard AS1210-2010.
- ◆ Manufacturer's Data Report available, in accordance with Australian Standard AS4458-1997.
- ◆ OH&S Registered Design approved for workplace use in all Australian States and Territories.
- ◆ Industry preferred socket stand placement. Reinforced vessel support attachments.
- ◆ External surfaces are abrasive blast cleaned, primed and finish coated in two-pack polyurethane paint.
- ◆ Dulux® Process Blue external colour indicates compressed air content in accordance with Australian Standard AS1345-1995.
- ◆ Individually packed in a horizontal position inside a full timber crate with plastic bag cover.
- ◆ Design optimised for ease of handling, transport, storage and installation.



PRODUCT CODE	VOLUME	DESIGN PRESSURE		DIMENSIONS																WEIGHT
				A	B	C	D	E	F	G	H	J	K	L	M	N	P	Q	R	
	Litres	kPa	psi	mm	mm	mm	mm	mm	mm	mm	mm	mm	inch	inch	inch	mm	inch	mm	mm	kg
T60-V	60	1,485	215	325		1,115	515	350	365	249		650	1/2		3/4				300	33
T150-V	150	1,235	179	390	214	1,700	750	450	375	254	620	1,200	1/2	3/4	1-1/2	150	1/2	14	388	68
T300-V	300	1,215	176	490	250	2,040	755	780	405	254	800	1,480	1/2	3/4	1-1/2	150	1/2	14	505	126
T530-V	530	1,215	176	640	300	2,140	820	750	445	254	750	1,500	1/2	3/4	2	150	1/2	14	645	205
T820-V	820	1,220	177	780	360	2,215	875	720	500	250	735	1,470	3/4	3/4	2	150	1/2	18	785	415
T1240-V	1,240	1,100	160	975	500	2,213	889	690	514	245	720	1,440	3/4	1	2	150	3/4	18	967	468

Design temperature range: 0°C to 100°C.  
 Design fluid contents: Non harmful gas.  
 Inspection openings and nameplate not shown for clarity.  
 All socket threads are BSPP (British Standard Pipe Parallel).

For improved air quality please consider our Refrigerated Dryers and Filters.



## **Information Sheet.**

### **EZ1 - Solenoid Controlled Auto Drain.**

Installing an automatic tank drain can have multiple benefits.

Its function is to discharge air from a pressurised air tank for a pre-set amount of time, at pre-set intervals.

By doing this, any condensate in the tank is discharged with each burst of air, keeping the tank moisture free and avoiding internal corrosion. This also avoids rust particles being passed through any filtration devices, meaning longer lasting tanks & filters, with less maintenance and no manual draining of the tank required, in turn supplying a better quality, cleaner & drier air to the tools or equipment being used, extending its service life.



Auto Drains are suitable for any stationary compressor, dryer, filter or stand alone air receivers, regardless of its size or capacity.

Discharge duration and interval timing is dependant on the component it is installed on, as well as its location, climate and general environment.

For assistance with the Auto Drains settings and maintenance, please see the “Basic Operation Instructions”

### C-Series Single-stage

**LB30** Max Piston Displacement 366 @ 1200RPM  
Cylinders / Stages 2 / 1  
Max Working Pressure 145psi / 10bar  
Oil capacity (l) 0.36



Suitable motor 2.2 HP / 1.65kW  
Drive belt 1A  
Bolt holes W x Depth 172 x 90  
Weight kg (Boxed) 17.5

**LB40** Max Piston Displacement 477 @ 1000RPM  
Cylinders / Stages 3 / 1  
Max Working Pressure 145psi / 10bar  
Oil capacity (l) 0.37



Suitable motor 3-4HP / 2.2-3.0kW  
Drive belt 1A  
Bolt holes W x Depth 221 x 150  
Weight kg (Boxed) 23.5

**LB50** Max Piston Displacement 510 @ 850RPM  
Cylinders / Stages 2 / 1  
Max Working Pressure 145psi / 10bar  
Oil capacity (l) 0.81



Suitable motor 5.5 HP / 4.0kW  
Drive belt 1A  
Bolt holes W x Depth 252 x 134  
Weight kg (Boxed) 31.5

**LB75** Max Piston Displacement 900 @ 1000RPM  
Cylinders / Stages 2 / 1  
Max Working Pressure 145psi / 10bar  
Oil capacity (l) 1.01



Suitable motor 7.5HP / 5.5kW  
Drive belt 1A  
Bolt holes W x Depth 252 x 170  
Weight kg (Boxed) 39.5

**UB75B** Max Piston Displacement 930 @ 850RPM  
Cylinders / Stages 2 / 1  
Max Working Pressure 145psi / 10bar  
Oil capacity (l) 1.94



Suitable motor 10.0HP / 7.5kW  
Drive belt 2B  
Bolt holes W x Depth 252 x 170  
Weight kg (Boxed) 107

**UB100** Max Piston Displacement 1256 @ 800RPM  
Cylinders / Stages 2 / 1  
Max Working Pressure 145psi / 10bar  
Oil capacity (l) 2.65



Suitable motor 10.0HP / 7.5kW  
Drive belt 2B  
Bolt holes W x Depth 350 x 170  
Weight kg (Boxed) 123

### C-Series Two-stage

**LT 40** Max Piston Displacement 335 @ 1050RPM  
Cylinders / Stages 3 / 2  
Max Working Pressure 160psi / 11bar  
Oil capacity (l) 1.02



Suitable motor 3.0HP / 2.2kW  
Drive belt 1A  
Bolt holes W x Depth 215 x 132  
Weight kg (Boxed) 25

### ABAC compressor pumps

**B2800** Max Piston Displacement 254 @1250RPM  
Cylinders / Stages 2 / 1  
Max Working Pressure 131psi / 9bar  
Oil capacity (L) 0.6



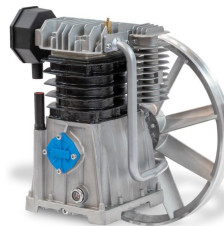
Suitable motor 2.2 HP / 1.65kW  
Drive belt 1A  
Bolt holes W x Depth 162 x  
Weight kg (Boxed) 8.5

**B3800** Max Piston Displacement 394 @ 1200RPM  
Cylinders / Stages 2 / 1  
Max Working Pressure 131psi / 9bar  
Oil capacity (L) 1



Suitable motor 3.0 HP / 2.2kW  
Drive belt 1A  
Bolt holes W x Depth 156 x  
Weight kg (Boxed) 11.5

**A49B** Max Piston Displacement 489 @ 1150RPM  
Cylinders / Stages 2 / 2  
Max Working Pressure 174psi / 12bar  
Oil capacity (L) 1.2



Suitable motor 4.0HP / 3.0kW  
Drive belt 1A  
Bolt holes W x Depth 156 x 140  
Weight kg (Boxed) 15

**B5900** Max Piston Displacement 653 @1370RPM  
Cylinders / Stages 2 / 2  
Max Working Pressure 174psi / 12bar  
Oil capacity (L) 2.3



Suitable motor 5.5HP / 4.0kW  
Drive belt 1A  
Bolt holes W x Depth 190 x  
Weight kg (Boxed) 22.5

**B6000** Max Piston Displacement 825 @ 1450RPM  
Cylinders / Stages 2 / 2  
Max Working Pressure 174psi / 12bar  
Oil capacity (L) 2.3



Suitable motor 7.5HP / 5.5kW  
Drive belt 1A  
Bolt holes W x Depth 248 x  
Weight kg (Boxed) 32

**B7000** Max Piston Displacement 1210 @1300RPM  
Cylinders / Stages 2 / 2  
Max Working Pressure 174psi / 12bar  
Oil capacity (L) 3.5



Suitable motor 10.0HP / 7.5kW  
Drive belt 1A  
Bolt holes W x Depth 290 x  
Weight kg (Boxed) 45



## FuSheng Pumps

**VA65** Max Piston Displacement 263 @ 900RPM  
Cylinders / Stages 2 / 1  
Max Working Pressure 145psi / 10bar  
Oil capacity (l) 0.7



Suitable motor 2.2 HP / 1.65kW  
Drive Pulley (mm/sec) 270/1A  
Bolt holes W x Depth 222 x 120  
Weight kg (Boxed) 20.5

**TA65** Max Piston Displacement 430 @ 900RPM  
Cylinders / Stages 3 / 1  
Max Working Pressure 145psi / 10bar  
Oil capacity (l) 1



Suitable motor 3.0 HP / 2.2 kW  
Drive Pulley (mm/sec) 270/2A  
Bolt holes W x Depth 222 x 150  
Weight kg (Boxed) 27.2

**VA80** Max Piston Displacement 543 @ 900RPM  
Cylinders / Stages 2 / 1  
Max Working Pressure 145psi / 10bar  
Oil capacity (l) 0.75



Suitable motor 4.0 HP / 5.5 kW  
Drive Pulley (mm/sec) 314/2A  
Bolt holes W x Depth 292 x 125  
Weight kg (Boxed) 48

**TA80** Max Piston Displacement 814 @ 900RPM  
Cylinders / Stages 3 / 1  
Max Working Pressure 145psi / 10bar  
Oil capacity (l) 1.5



Suitable motor 5.5 HP / 4.0 kW  
Drive Pulley (mm/sec) 400/2A  
Bolt holes W x Depth 294 x 160  
Weight kg (Boxed) 67.5

**VA100** Max Piston Displacement 990 @900RPM  
Cylinders / Stages 2 / 1  
Max Working Pressure 145psi / 10bar  
Oil capacity (l) 1.9



Suitable motor 7.5HP / 5.5kW  
Drive Pulley (mm/sec) 300/2B  
Bolt holes W x Depth 350 x 150  
Weight kg (Boxed) 93.5

**TA100** Max Piston Displacement 1484 @900RPM  
Cylinders / Stages 3 / 1  
Max Working Pressure 145psi / 10bar  
Oil capacity (l) 2.5



Suitable motor 10.0HP / 7.5kW  
Drive Pulley (mm/sec) 300/3B  
Bolt holes W x Depth 350 x 170  
Weight kg (Boxed) 121

**TA120** Max Piston Displacement 2036 @750RPM  
Cylinders / Stages 3 / 1  
Max Working Pressure 145psi / 10bar  
Oil capacity (l) 4.3



Suitable motor 15.0HP / 11.0kW  
Drive Pulley (mm/sec) 352/4B  
Bolt holes W x Depth 396 x 228  
Weight kg (Boxed) 182

Alternative part no.s: B3/B3000 , B4/B4000

**Aluminium casing, flywheel & valve plate with stainless steel valve reeds.**

**EN3** Max Piston Displacement 315 @ 1400RPM  
Cylinders / Stages 2 / 1  
Max Working Pressure 145psi / 10bar  
Oil capacity (L) 1



Suitable electric motor 3.0HP / 2.2kW  
Drive belt 1A  
Bolt holes W x Depth 189 x 143  
Overall Dimensions 290 x 250 x 320  
Weight kg (Boxed) 11.4

**EN4** Max Piston Displacement 541 @ 1400RPM  
Cylinders / Stages 2 / 1  
Max Working Pressure 145psi / 10bar  
Oil capacity (L) 1.2



Suitable electric motor 4.0HP / 3.0kW  
Drive belt 1A  
Bolt holes W x Depth 204 x 152  
Overall Dimensions 300 x 240 x 370  
Weight kg (Boxed) 15.4

Tel: (03) 9532 9720

E-mail: [sales@mcmillanair.com.au](mailto:sales@mcmillanair.com.au)



[www.mcmillanair.com.au](http://www.mcmillanair.com.au)



## COMPRESSOR DUTY MOTOR

TECO AUSTRALIA PTY LTD has been acknowledged for many years as a supplier of high quality efficient and reliable electric motors to industry.

The COMPRESSOR DUTY motor has been produced to raise the market standard in quality and performance. All motors are manufactured to current AUSTRALIAN electrical and mechanical standards and are subject to stringent quality controls which ensure the user of a high degree of reliability, backed by a full 12 month warranty.



### FEATURES:-

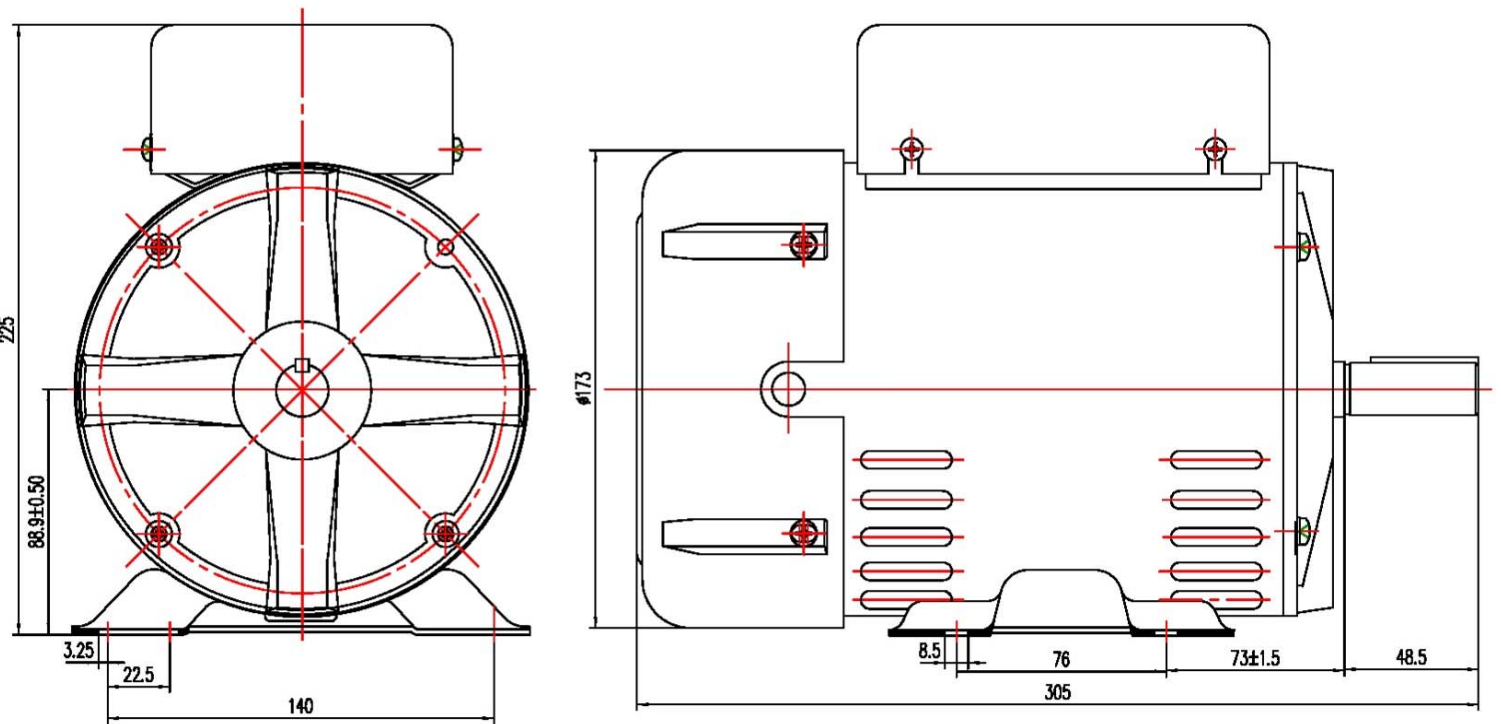
- Heavy duty rolled steel shell frame
- Drip proof fan cooled IP22
- Dynamically balanced rotor
- Heavy duty bearings
- Bi-directional rotation
- Pressed metal fan cover
- Pressed metal capacitor cover
- Excellent protective paint finish
- Able to withstand temporary voltage drop when starting
- Pre wired with three core flex for connection to the compressor air switch and a separate supply lead with 3 pin plug.
- Two models available -
  - 1) Capacitor start capacitor run
  - 2) PSC (Permanent split capacitor, for compressors with unloaded starting)
- Two outputs ratings for both models -
  - 1.65 kW
  - 2.2 kW
- 2 pole 2850 RPM
- B56 frame foot mounted
- Low full load currents
- Thermal overload protection
- High quality capacitors
- Single phase 240 Volt 50 Hz

**AUSTRALIA WIDE SERVICE**

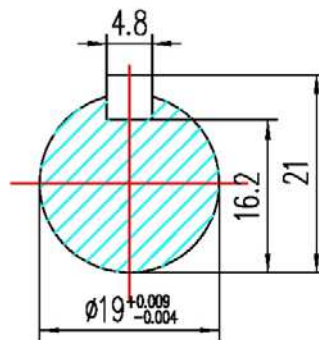
MS2-092003



## OUTLINE DIMENSIONS



## SHAFT DETAIL



**McMILLAN**  
Air Compressors Since 1954

## Filter Regulators – Bracket Mount

- ◆ Sintered bronze filter element.
- ◆ Gauge included.

Product Code	Airflow CFM	Thread BSP	Maximum psi	Height mm	Width mm
FR 104	14	1/4"	130	180	80
FR 108	35	1/2"	130	300	100



## Filter Regulators – Tank Mount

- ◆ Made in Italy.
- ◆ Twin 1/4" BSP outlet tap.
- ◆ Sintered bronze filter element.
- ◆ German made pressure gauge.
- ◆ Self draining.

Product Code	Airflow CFM	Thread BSP	Maximum psi	Height mm	Width mm
Midi	12	3/8"	100	165	80
Maxi	20	1/2"	100	210	90



# Pressure Gauges

- ◆ Solid, high quality construction.
- ◆ Steel case & chrome bezel.
- ◆ Copper bourdon tube.
- ◆ Dual calibration - metric & imperial.
- ◆ Suitable for compressed air only.

Product Code	Diameter mm	Mount	Thread BSP	Max Pressure bar	psi
GFR 40	40	Rear	1/8"	13	180
GR 50 HP	50	Rear	1/4"	21	300
GR 63	63	Rear	1/4"	16	240
GB 63	63	Base	1/4"	16	240
GB 63 HP	63	Base	1/4"	21	300





## Condor Pressure Switches

- ◆ Genuine Condor with differential adjustment.
- ◆ Includes unloader and glands.

Product Code	Ports	Thread BSP
MDR 2	4	1/4"

## Single Phase 240 Volt



## Condor Pressure Switches

- ◆ Price includes Relay, EV5 Unloader and Glands.

Product Code	Amp Range	Thread BSP
MDR 3/10	6–10	1/4"
MDR 3/16	11–16	1/4"
MDR 3/20	17–20	1/4"
MDR 5/7	4–7	1/4"
MDR 5/10	6.1–10.3	1/4"
MDR 5/14	9–14	1/4"
MDR 5/18	11–18	1/4"

## Three Phase 415 Volt



## NEMAC Pressure Switches

- ◆ Featuring “soft start” unloader.

Product Code	Differential	Ports	Thread BSP
Nemac 4	2 Bar	4	1/4"
Nemac 1	2 Bar	1	1/4"

## Single Phase 240 Volt



# Safety Valves

- ◆ Approved to Australian Safety Standard AS1271.
- ◆ Larger sizes available.
- ◆ Made in Italy - Brass construction.

Product Code	Airflow CFM	Thread BSP	Pressure Bar
SV 1/4-10	22	1/4"	10.0
SV 1/4-11.45	22	1/4"	11.45
SV 1/4-3	22	1/4"	13.0
SV 1/2-1	63	1/2"	11.6
SV 1/2-2	63	1/2"	12.0



# Relief Valve

- ◆ Made in Italy – Brass construction.
- ◆ Adjustable pressure relief valve.

Product Code	Airflow CFM	Thread BSP	Range psi
RV 1/4	22	1/4"	60–150



# Check Valves

- ◆ Brass construction.
- ◆ Made in Italy.
- ◆ Repair kits available.

Product Code	Inlet Thread BSP	Outlet Thread BSP	Inlet Connection
NRV 1/2	1/2"M	1/2"M	Compression
NRV 3/4-S	1/2"M	3/4"M	Flat
NRV 3/4	3/4"M	3/4"M	Compression
NRV 1	1"M	1"M	Compression
NUT 1/2	1/2"		Compression
NUT 3/4	3/4"		Compression
NUT 1	1"		Compression



# Drain Valves

- ◆ Brass construction.

Product Code	Thread BSP
DC 1/4	1/4"
DC 1/2	1/2"



# Motors

# Single Phase 240 Volt

- ◆ TAC – supplied by Teco Australia P/L.
- ◆ Drip proof – IP22.
- ◆ 3 Phase motors available.

Product Code	Power Hp	kW	Frame Size	Power Supply	Shaft Diameter
EMT 2.2	2.2	1.65	B56	10.0	3/4"
EMT 3.0	3.0	2.2	B56	15.0	3/4"



# Guards

# Guard Sets

- ◆ Specifically designed moulded plastic.
- ◆ Critical for airflow and pump cooling.

Product Code	Description	Compatible
G 2800	2 Piece	ABAC / B2800
G 4900	2 Piece	ABAC / SIP / I.R.
G 5/6000	3 Piece	ABAC / SIP / I.R.
G 7000	3 Piece	ABAC / SIP / I.R.





## Air Filter Assembly

- ◆ Suits many brands.

Product Code	Thread BSP	Size mm	Material	Element
FA 3/8	3/8"	65ø	Plastic	Foam
FA 1/2	1/2"	90ø	Plastic	Cartridge
FA 1/2 M	1/2"	90ø	Metal	Cartridge
FA 3/4	3/4"	135ø	Plastic	Cartridge
FA 1	1"	150ø	Metal	Cartridge
2881000	–	110x65	Plastic	Foam



## Discharge Hose

- ◆ Fully flexible.
- ◆ Different lengths available.

Product Code	Thread BSP	Material	Length mm
FMH 1/2	1/2"	Stainless	325/250/200



## Outlet Taps

- ◆ Lever style for air outlet control.

Product Code	Thread BSP	Port	Material
TAP 1/8	1/8"	M&F	Z/P Steel
TAP 1/4	1/4"	M&F	Brass
TAP 1/2	1/2"	F&F	Brass



## Wheels

- ◆ High quality.
- ◆ Heavy duty.

Product Code	Diameter mm	Width mm	Bore mm	Tyre Material
W 175	175	45	20	Rubber
W 10	250	80	20	Pneumatic

