

AIR DRY SUPER DOUGH

Is an air hardening modelling material which is extremely soft and pliable with a silky smooth texture. Super Dough is water based, does not stain, is super light-weight and very elastic – bounces like a rubber ball. Colours mix easily and do not fade over time. Super Dough is non toxic and gluten free. A real feature is that it can be 'refreshed' with water and even 're-used' after it has completely dried – see the "Features & Benefits" sheet.



Create a LOLLIPOP & ROSE



You will need:

- Air Dry Super Dough
- Wooden stick (large meat skewer)

Knead Super Dough by 'stretching & releasing' several times to make it flexible again.



Method - Lollipop

Step 1:

Roll the Super Dough on a flat surface to make a long sausage and leave aside. The length and diameter depends on how large you want your lollipop to be.



Step 2:

Repeat Step 1 & 2 for each colour.



Step 3:

Lay each piece of dough next to each other or on top and then begin to twist. Hold one

side of the Super Dough colours in one hand and twist with the other until the desired look is reached – try to keep the twist even and consistent.



Step 4:

Lay the twisted Super Dough on the flat surface again and roll to make a nice roll.

Step 5:

While still on the flat surface, begin to curl the Super Dough in a circle to form the lollipop. Super Dough will stick to itself as soon as it touches.



Step 6:

For the lollipop stick, gently push the wooden stick into the Super Dough where the curl ends. Set aside to dry – it will start to dry on the outside by forming a hard surface and will continue to dry over several days.

Method - Rose:

Step 1:

Take a small amount of Super Dough and form the first petal by working it through your thumb and forefinger making a thin, flat piece with a round edge.

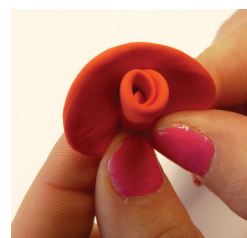
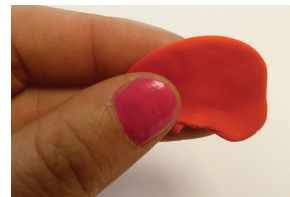


Step 2:

Roll the petal around on itself, as shown and set aside.

Step 3:

Repeat Step 1 to form the next petal. Hold the first formed petal in one hand and place the next petal around it, just overlapping where last finished. Curl the top of the petal slightly outwards.



Step 4:

Repeat Step 3 to add more petals.

Step 5:

Set aside to dry – it will start to dry on the outside by forming a hard surface and will continue to dry over the next day or so.



This is an amazing product for children (& adults) – it is fun, creative, innovative as well as educational!



AIR DRY SUPER DOUGH

Is an air hardening modelling material which is extremely soft and pliable with a silky smooth texture. Super Dough is water based, does not stain, is super light-weight and very elastic – bounces like a rubber ball. Colours mix easily and do not fade over time. Super Dough is non toxic and gluten free. A real feature is that it can be 'refreshed' with water and even 're-used' after it has completely dried – see the "Features & Benefits" sheet.



Create CHILDREN'S FUN



You will need:

- Air Dry Super Dough
- Rolling pin
- Dough or cookie cutters
- Dough tools

Knead Super Dough by 'stretching & releasing' several times to make it flexible again



Method - Shapes:

Step 1: Take some Super Dough in your choice of colour and roll out flat with a rolling pin.

Step 2: Cut shapes using dough or cookie cutters.

Step 3: You can choose to leave them plain or decorate using other Super Dough colours and leave to dry.



Method - Caterpillar:

Step 1: Using different colours of Super Dough, roll 9 balls of equal size.

Step 2: Line 8 of the balls in a straight line and touch them together so they join.

Step 3: Add 1 ball on top of the first one to make the head.

Step 4: Add eyes, nose, mouth, antennas and a tail by making the shapes and placing onto the caterpillar.

Step 4: If you would like a curved caterpillar, simply curve the body around into the desired shape and leave to dry.



Method - Flat Fish:

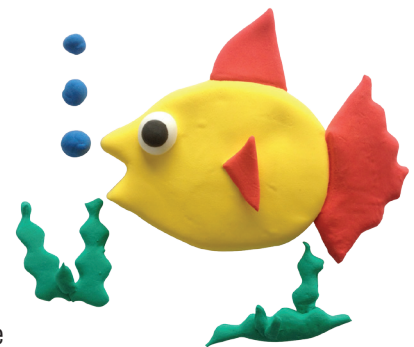
Step 1: Take some Yellow Super Dough and roll into a ball and flatten with the palms of your hands. Shape the mouth with your fingers.

Step 2: Roll 2 balls of white and then smaller balls of black and place onto the centre of the white to form the eyes then place onto the fish.

Step 3: Roll some Red Super Dough until flat and cut shapes for the tail and fins using dough tools. Place these onto the fish.

Step 4: Roll some Green Super Dough until flat, then using the patterned dough cutter, cut shapes for pieces of seaweed.

Step 5: Roll some balls of Blue Super Dough for the bubbles. Leave to dry.



You could also paint a sea background on white paper using Five Star Tempera Paints or Five Star Ezi-dye & place your Super Dough items on

Method - Bouncing Ball:

Multi Coloured Ball: Take several different colours of Super Dough and roll or twist together then roll into a ball and leave to dry.



This is an amazing product for children (& adults) – it is fun, creative, innovative as well as educational!

